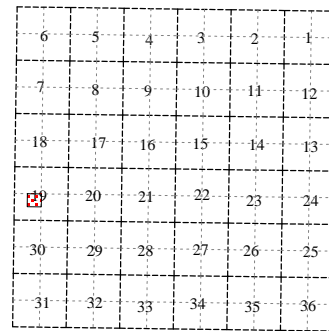
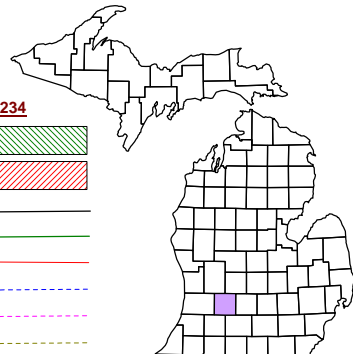


Castleton Township  
T 3 N R 7 W  
Barry County  
Michigan

- Address
- Gap
- Overlap
- Real Property
- Personal Property
- Approved Split
- Plat
- Condominium
- Mobile Home Park



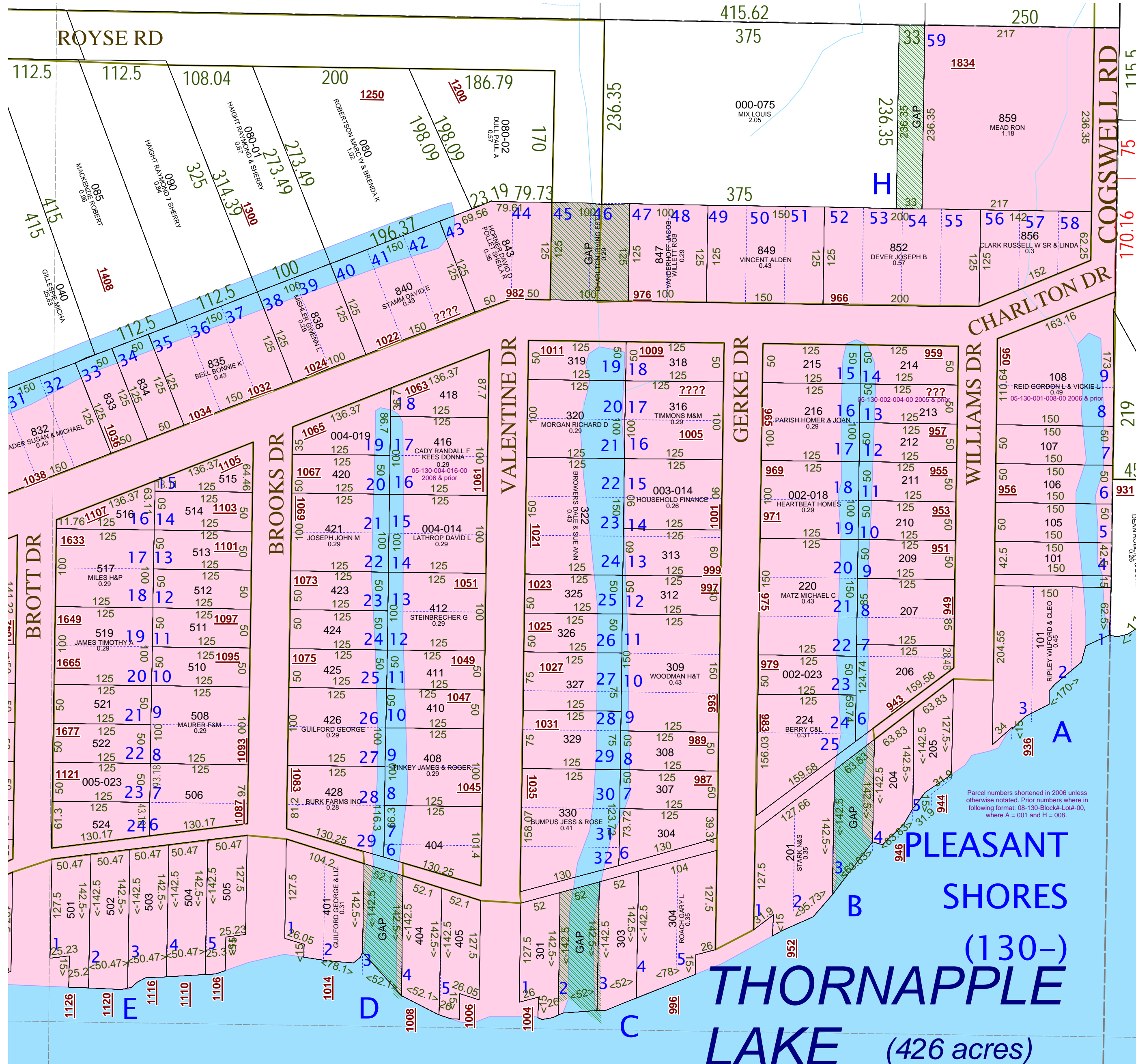
NE 1/4 SW 1/4 Section 19  
08-05-019-

For tax years 2005 & prior parcel numbers had leading "000" after section unless otherwise noted.  
Scale 1" = 100'  
This tax map was compiled for tax administration purposes from county and township records. It does not represent a land survey.  
Barry County Land Information Services  
220 West State Street, Hastings MI 49058  
(269) 945-1292 or <http://www.barrycounty.org/>

January 2009



All dimensions are from tax roll unless noted below.  
D = deeded M or S = surveyed  
SR = Surveyor's Record prior to 1915  
GLO = Government Land Office circa. 1830



GAPs owned by the Estate of Irving Charlton as proprietor of the plat.

Parcel numbers shortened in 2006 unless otherwise notated. Prior numbers where in following format: 08-130-Block#-Lot#-00, where A = 001 and H = 008.