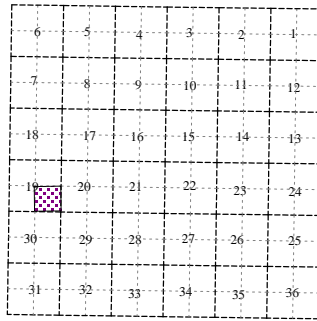
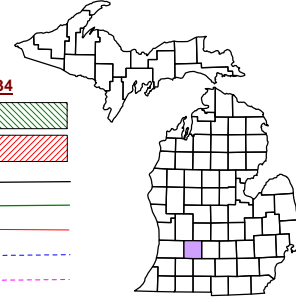


**Castleton Township**  
**T 3 N R 7 W**  
**Barry County**  
**Michigan**

- Address 1234
- Gap
- Overlap
- Real Property
- Personal Property
- Approved Split
- Plat
- Condominium
- Mobile Home Park



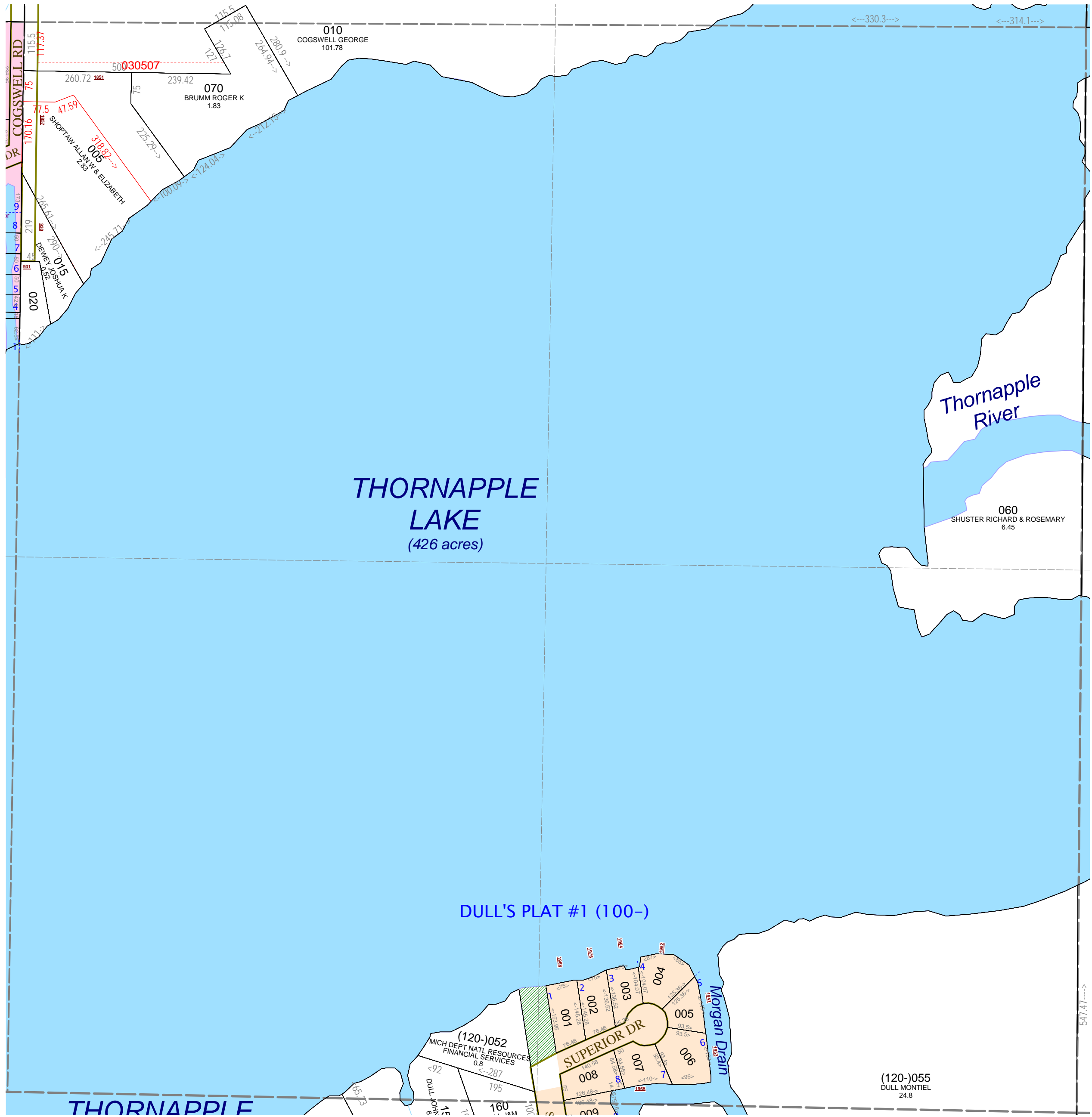
**SE 1/4 Section 19**  
**08-05-019-**  
**Scale 1" = 200'**

This tax map was compiled for tax administration purposes from county and township records. It does not represent a land survey. Barry County Land Information Services 220 West State Street, Hastings MI 49058 (269) 945-1292 or <http://www.barrycounty.org/>



January 2003  
 Revised June 2004  
 Revised May 2005  
 Revised January 2009

All dimensions are from tax roll unless noted below.  
 D = deeded M or S = surveyed  
 SR = Surveyor's Record prior to 1915  
 GLO = Government Land Office circa. 1830



08-05-120-052-00 should include gap parcel to its east.