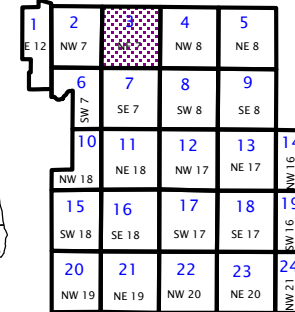
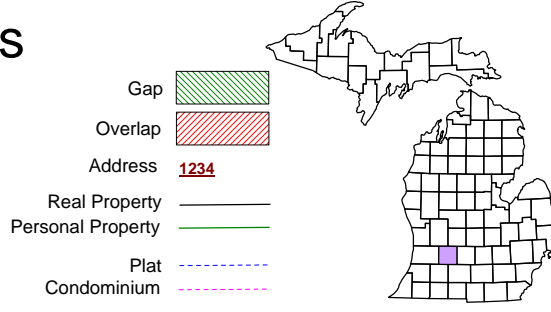


City of Hastings
T 3 N R 8 W
Barry County
Michigan
Sheet 3



NE 1/4 Section 7
08-55-135-
Scale 1" = 200'

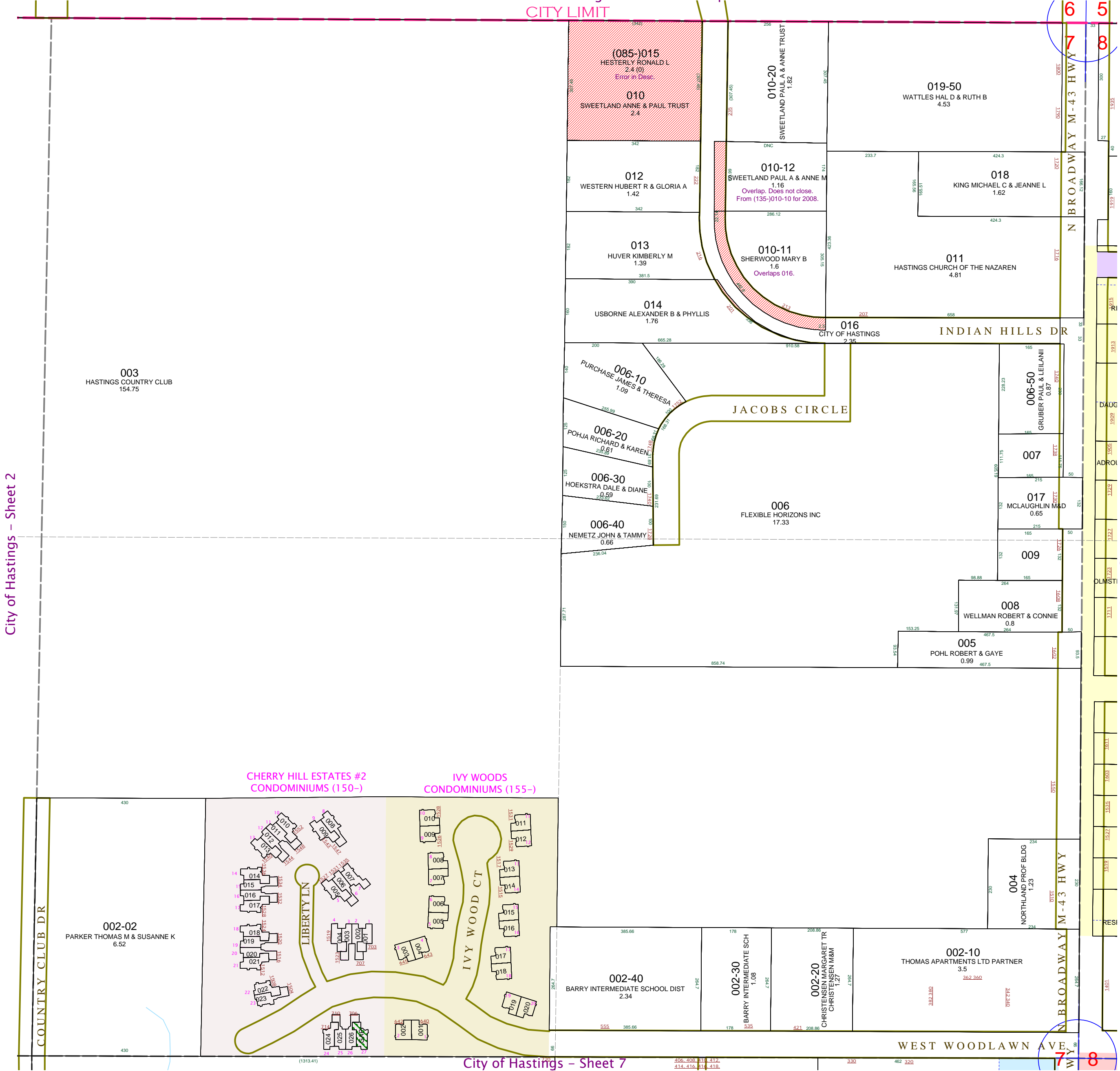
This tax map was compiled for tax administration purposes from county and township records. It does not represent a land survey.
Barry County Land Information Services
200 West State Street, Hastings MI 49058
(269) 945-1292 or <http://www.barrycounty.org/>



June 1998
Revised July 2000
Revised December 2002
Revised May 2004
Revised September 2005
Revised January 2007
Revised August 2008

All dimensions are from tax roll unless noted below.
D = deeded M or S = surveyed
SR = Surveyor's Record prior to 1915
GLO = Government Land Office circa. 1830

Section 6 T3N R8W - Hastings Charter Township



08-55-085-015-00 has the wrong tax description entirely. Looks like it got swapped with another correction from a few years ago.

08-55-135-010-12 has wrong range number, does not close and overlaps property given by the prior title holders to the City of Hastings for Indian Hills Drive in L.284-294.

08-55-135-010-11 has wrong range number, error in first course after point of beginning and it overlaps property given by the prior title holders to the City of Hastings for Indian Hills Dr in L.284-294.

City of Hastings - Sheet 2

City of Hastings - Sheet 4

City of Hastings - Sheet 7

GAP was 08-55-150-027-00. Recorded Master Deed and Condominium still show that unit as in existence even though it was never constructed.