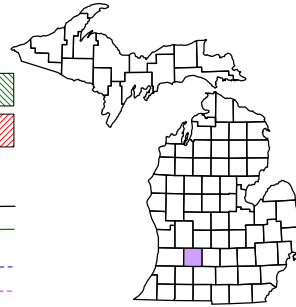


City of Hastings
T 3 N R 8 W
Barry County
Michigan
Sheet 5

- Gap
- Overlap
- Address
- Real Property
- Personal Property
- Plat
- Condominium



1	2	3	4	5
6	7	8	9	10
11	12	13	14	15
16	17	18	19	20
21	22	23	24	25

NE 1/4 Section 8
08-55-055-
Scale 1"= 200'

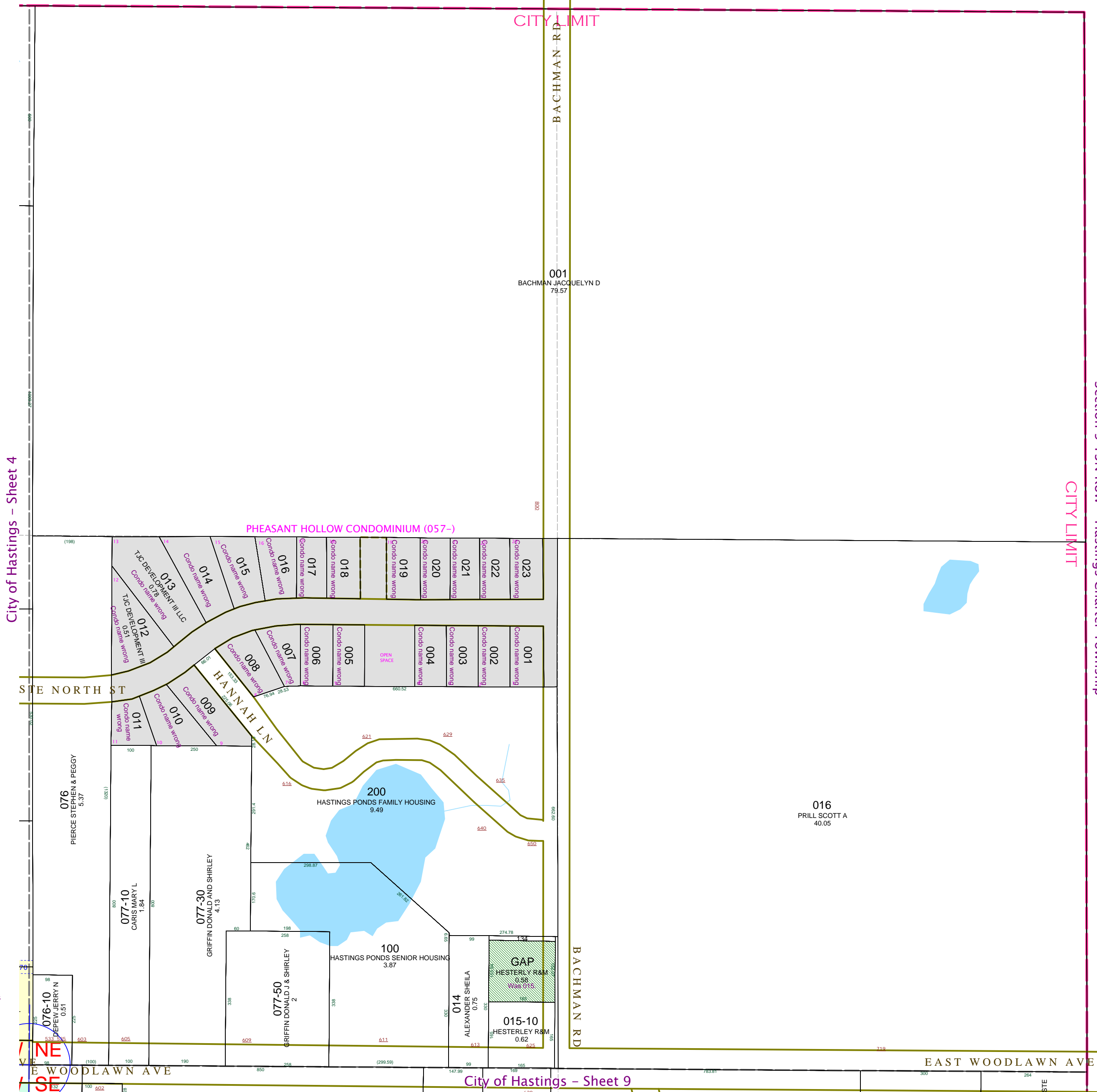
This tax map was compiled for tax administration purposes from county and township records. It does not represent a land survey.
Barry County Land Information Services
220 West State Street, Hastings MI 49058
(269) 945-1292 or <http://www.barrycounty.org/>



June 1998
Revised July 2000
Revised December 2002
Revised May 2004
Revised September 2005
Revised January 2007
Revised August 2008

All dimensions are from tax roll unless noted below.
D = deeded M or S = surveyed
SR = Surveyor's Record prior to 1915
GLO = Government Land Office circa. 1830

Section 5 T3N R8W - Hastings Charter Township



08-55-057-001-00 thru 023-00 all have the wrong subdivision name on them.

GAP was 08-55-085-015-00 because it has the wrong tax description entirely. Looks like it got swapped with another correction from a few years ago.

City of Hastings - Sheet 4

City of Hastings - Sheet 9

Section 9 T3N R8W - Hastings Charter Township