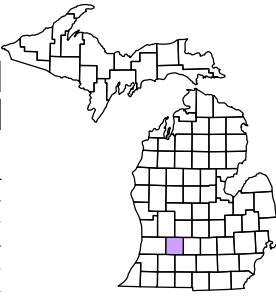


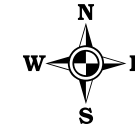
Hastings Charter  
Township  
T 3 N R 8 W  
Barry County  
Michigan

- Gap
- Overlap
- Address 1234
- Real Property
- Personal Property
- Approved Split
- Plat
- Condominium
- Mobile Home Park



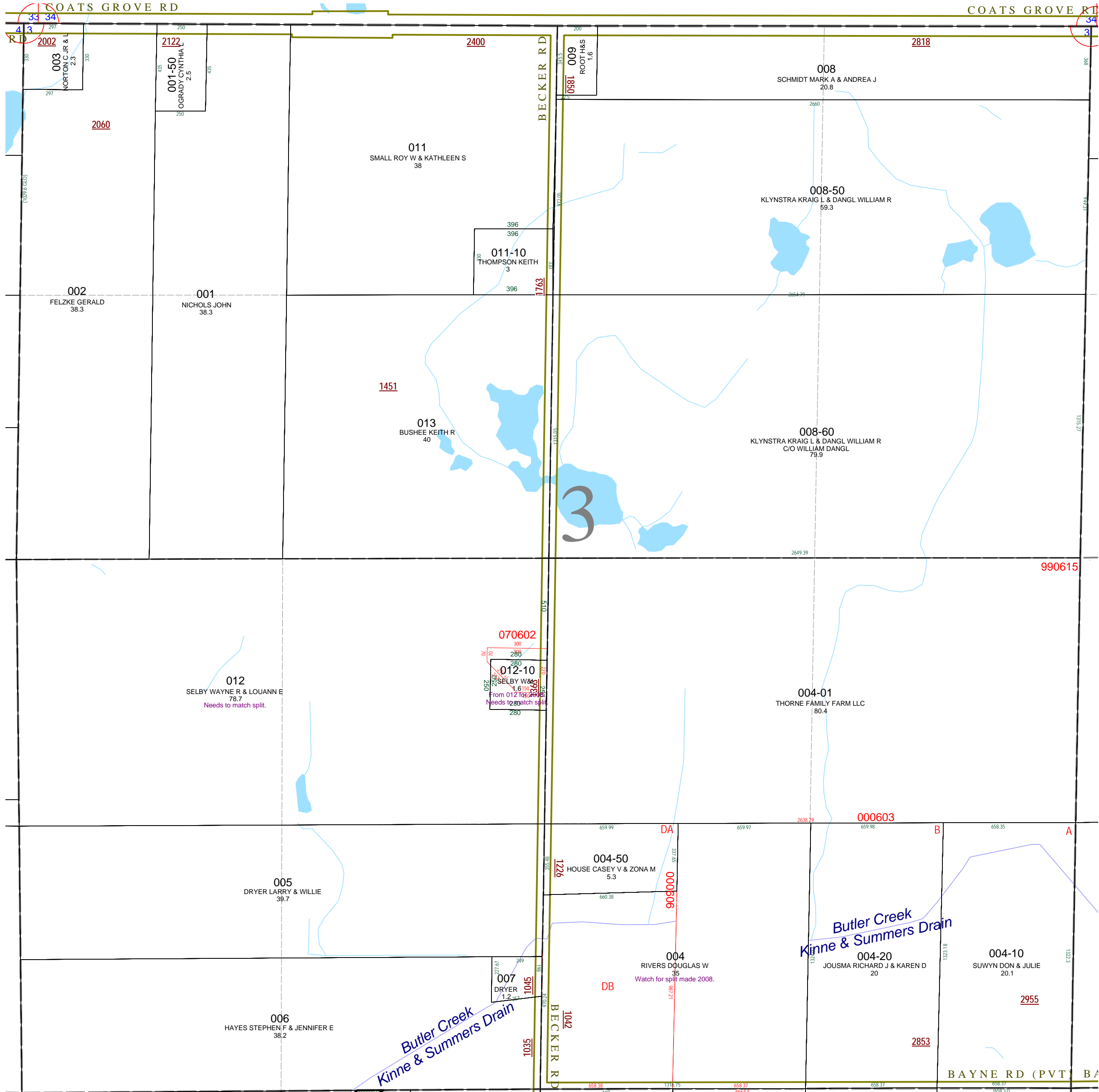
6	5	4	3	2	1
7	8	9	10	11	12
13	14	15	16	17	18
19	20	21	22	23	24
25	26	27	28	29	30
31	32	33	34	35	36

Section 3  
08-06-003-  
Scale 1" = 400'



This tax map was compiled for tax administration purposes from county and township records. It does not represent a land survey. Barry County Land Information Services 220 West State Street, Hastings MI 49058 (269) 945-1292 or <http://www.barrycounty.org/>

December 1997  
Revised August 1999  
Revised February 2001  
Revised September 2002  
Revised June 2003  
Revised September 2004  
Revised July 2006  
Revised December 2008  
All dimensions are from tax roll unless noted below.  
D = deeded M or S = surveyed  
SR = Surveyor's Record prior to 1915  
GLO = Government Land Office circa. 1830



08-06-003-012-00 has been revised by quit claim deed in R#1182845

08-06-003-012-10 has been revised by quit claim deed in R#1182845

08-06-003-004-00 was split by sheriff's deed in #20071017-0003143 to parcel DB of split #000606 and remainder deed in #20080204-0001059 into parcel C of split #000603.