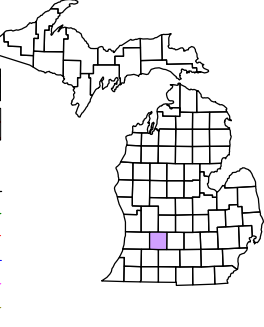
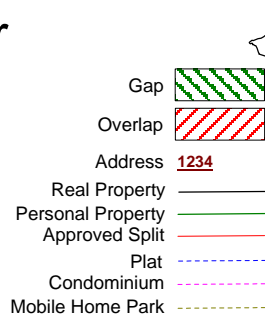


Hastings Charter
Township
T 3 N R 8 W
Barry County
Michigan



1	2	3	4	5	6
7	8	9	10	11	12
13	14	15	16	17	18
19	20	21	22	23	24
25	26	27	28	29	30
31	32	33	34	35	36

SW 1/4 SE 1/4 Section 6
08-06-006-
Scale 1" = 100'

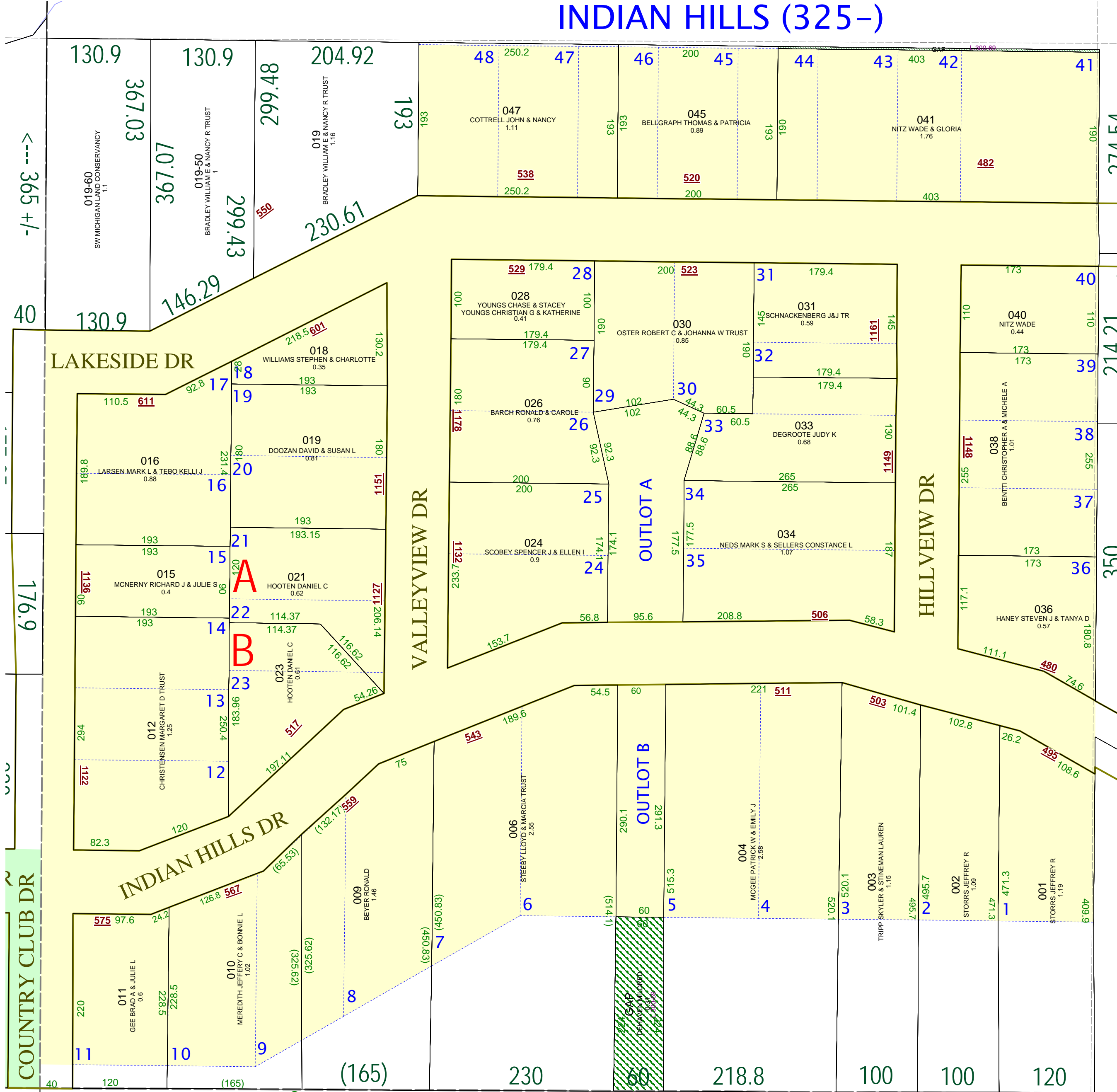
December 2008



This tax map was compiled for tax administration purposes from county and township records. It does not represent a land survey.
Barry County Land Information Services
220 West State Street, Hastings MI 49058
(269) 945-1292 or <http://www.barrycounty.org/>

All dimensions are from tax roll unless noted below.
D = dedeed M or S = surveyed
SR = Surveyor's Record prior to 1915
GLO = Government Land Office circa. 1830

INDIAN HILLS (325-)



GAP north of lots 41 thru 44 owned in L.300-69 by Mildred DeHaven survivor of Roy F. DeHaven (D.R. L.403-713).

GAP south of outlot B owned by in L.300-69 by Mildred DeHaven survivor of Roy F. DeHaven (D.R. L.403-713).