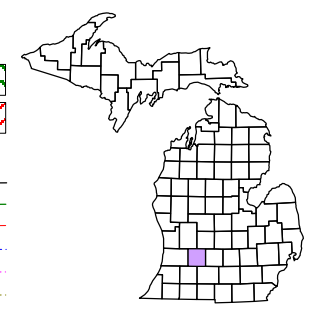


Hastings Charter
Township
T 3 N R 8 W
Barry County
Michigan

- Gap
- Overlap
- Address
- Real Property
- Personal Property
- Approved Split
- Flat
- Condominium
- Mobile Home Park



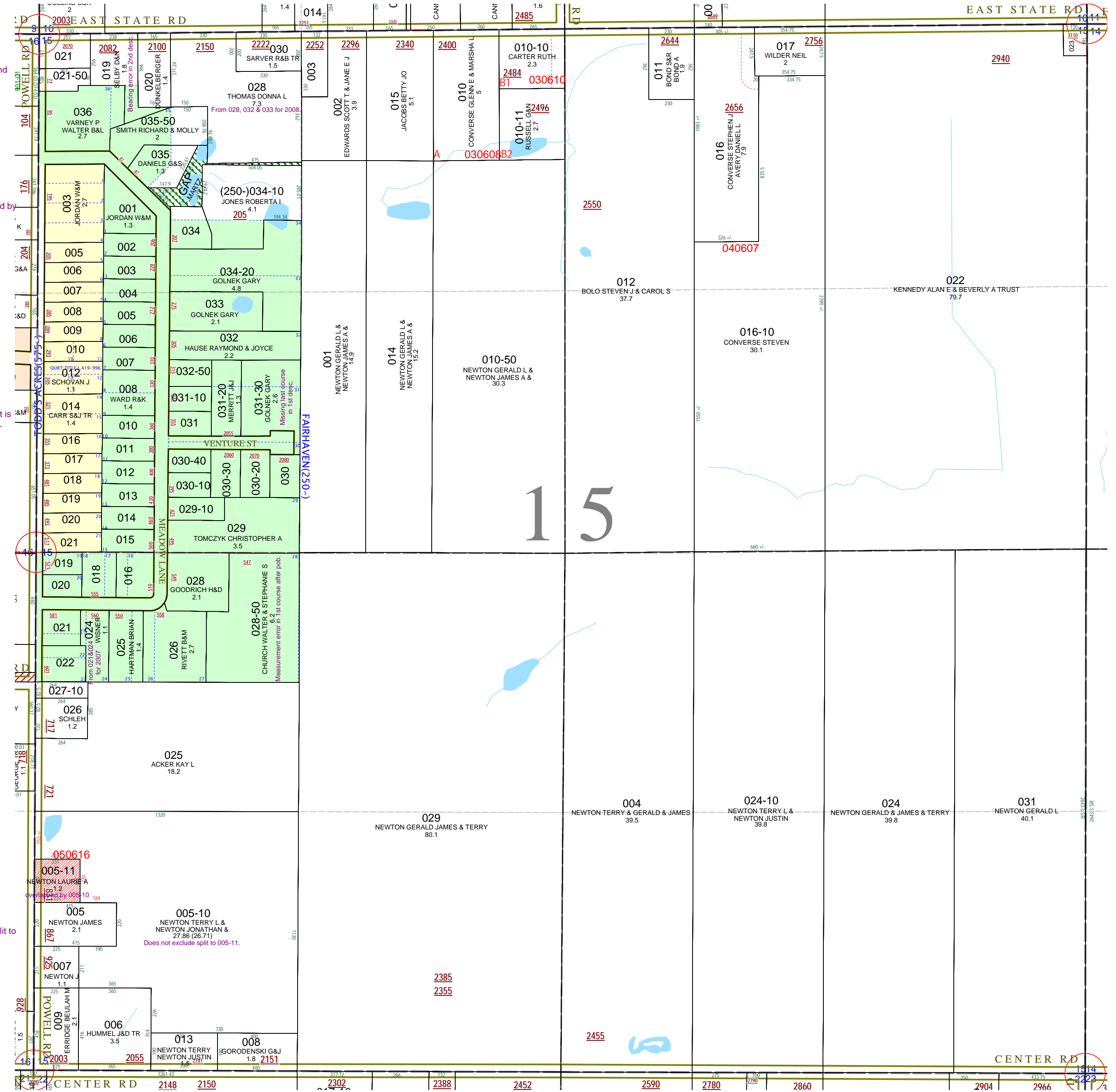
6	5	4	3	2	1
7	8	9	10	11	12
13	14	15	16	17	18
19	20	21	22	23	24
25	26	27	28	29	30
31	32	33	34	35	36

Section 15
08-06-015-
Scale 1" = 400'



December 1997
Revised August 1999
Revised February 2001
Revised September 2002
Revised June 2003
Revised September 2004
Revised July 2006
Revised December 2008
All dimensions are from tax roll unless noted below.
D = deeded M or S = surveyed
SR = Surveyor's Record prior to 1915
GLO = Government Land Office circa. 1830

This tax map was compiled for tax administration purposes from county and township records. It does not represent a land survey.
Barry County Land Information Services
220 West State Street, Hastings MI 49058
(269) 945-1292 or <http://www.barrycounty.org/>



08-06-015-019-00 has an bearing error in 2nd description.

GAP in NW 1/4 NW 1/4 section 15 controlled by Loyd & Nita Martz Trust in Trust Certificate R#1000759.

08-06-250-031-30 does not close because it is missing its last course in the 1st description.

08-06-250-028-50 has an error, change measurement of 370ft to 373ft.

08-06-015-005-10 does not exclude new split to 005-11.

1044
1044
1044

1044
1044
1044