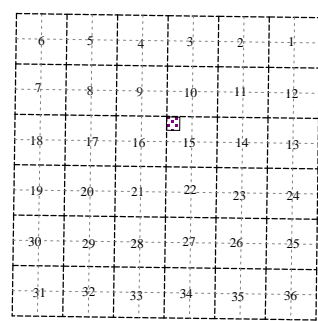
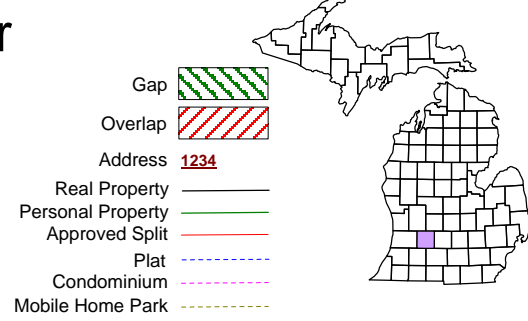


Hastings Charter
Township
T 3 N R 8 W
Barry County
Michigan



NW 1/4 NW 1/4 Section 15 December 2008

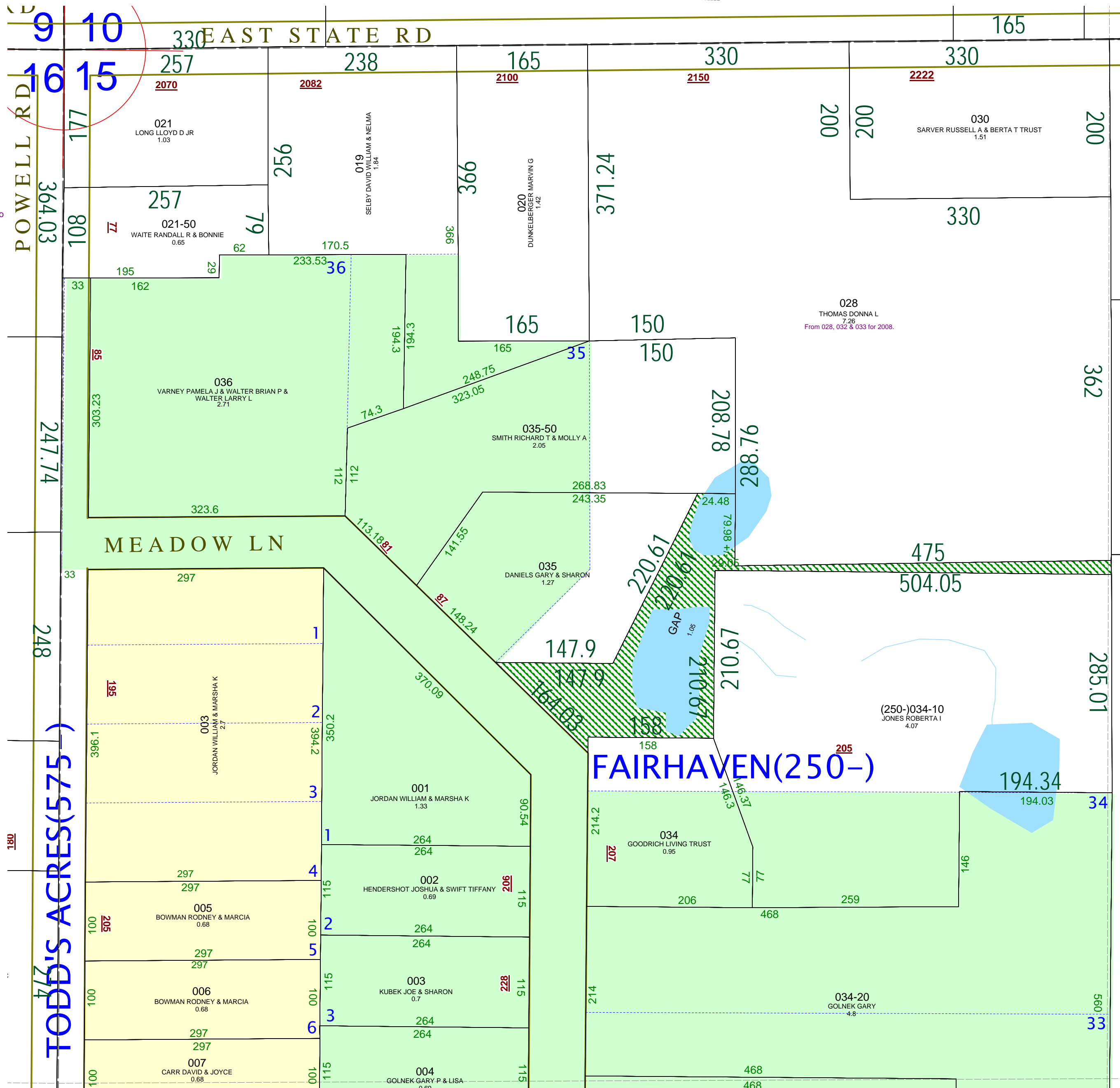
08-06-015-
Scale 1" = 100'

This tax map was compiled for tax administration purposes from county and township records. It does not represent a land survey. Barry County Land Information Services 220 West State Street, Hastings MI 49058 (269) 945-1292 or http://www.barrycounty.org/



All dimensions are from tax roll unless noted below.
D = deeded M or S = surveyed
SR = Surveyor's Record prior to 1915
GLO = Government Land Office circa 1830

08-06-015-019-00 has an bearing error in 2nd description. Change "TH 69°32' E 74.3' POB" to "TH N69°32' E 74.3FT TO POB"



08-06-015-GAP in NW 1/4 NW 1/4 section 15. Controlled by Loyd & Nita Martz Trust in Trust Certificate R#1000759.