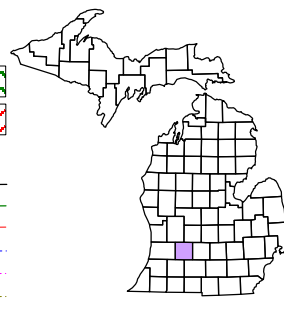


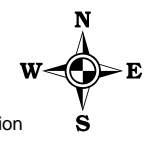
Hastings Charter
Township
T 3 N R 8 W
Barry County
Michigan

- Gap
- Overlap
- Address
- Real Property
- Personal Property
- Approved Split
- Plat
- Condominium
- Mobile Home Park



6	5	4	3	2	1
7	8	9	10	11	12
13	14	15	16	17	18
19	20	21	22	23	24
25	26	27	28	29	30
31	32	33	34	35	36

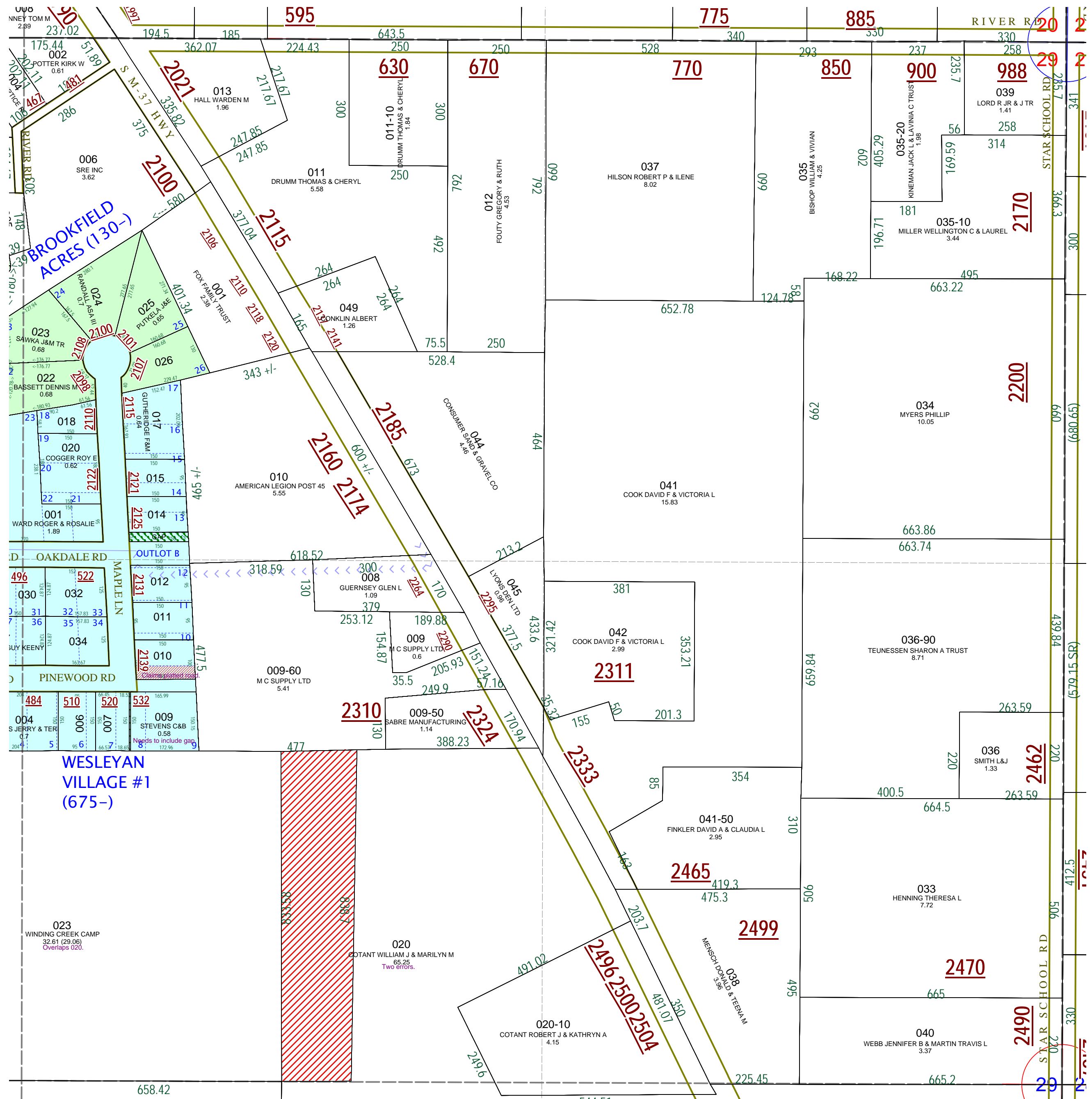
NE 1/4 Section 29
08-06-029-
Scale 1" = 200'



August 1999
Revised February 2001
Revised September 2002
Revised June 2003
Revised July 2006
Revised December 2008

This tax map was compiled for tax administration purposes from county and township records. It does not represent a land survey.
Barry County Land Information Services
220 West State Street, Hastings MI 49058
(269) 945-1292 or <http://www.barrycounty.org/>

All dimensions are from tax roll unless noted below.
D = deeded M or S = surveyed
SR = Surveyor's Record prior to 1915
GLO = Government Land Office circa. 1830



GAP owned by Wesleyan Village Inc in remainder of lot 13 & remainder of outlot B.
08-06-675-010-00 should not include any part of original platted road which has not been vacated.
08-06-675-009-00 needs to include gap west of property.

08-06-029-020-00 has two errors, change "S89°53'20"E 65.54FT" to "S89°53'20"W 65.54FT" and "SE COR LOT 21" to "SE COR LOT 9"
08-06-029-023-00 overlaps 020-00 because of a missing course. See LC in R#1148245.