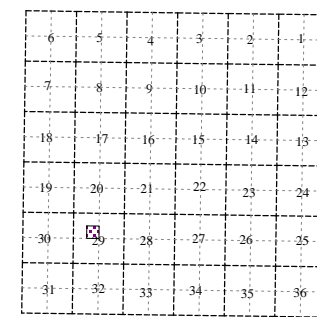
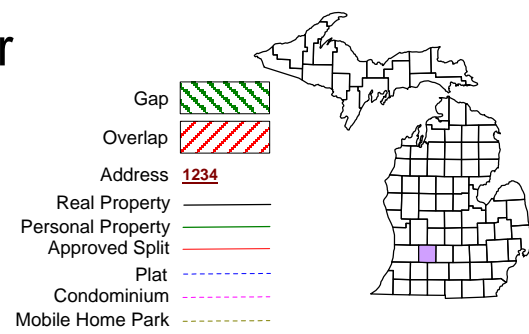


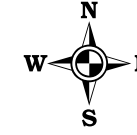
THEONAPPEL	IRVING	CARLTON	WHEELAND
YANKEE SPRINGS	RUTLAND	CASTLETON	Nashville
ORANGEVILLE	HOPE	HEALTHMORE	MAPLE GROVE
PRAIRIEVILLE	Debra BARRY	ROBINSTOWN	ASSYRIA

Hastings Charter Township
T 3 N R 8 W
Barry County Michigan



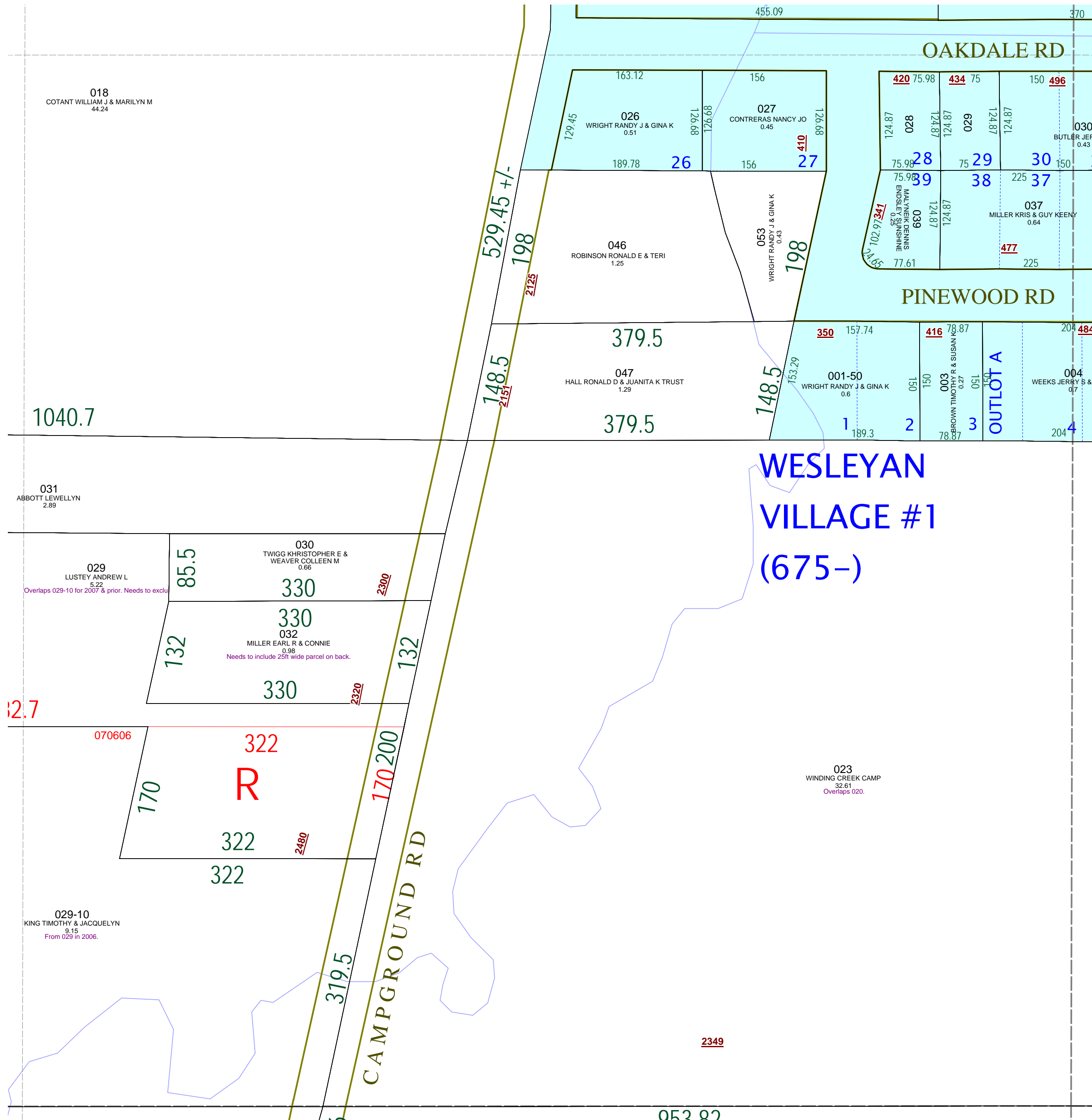
SE 1/4 NW 1/4 Section 29
08-06-029-
Scale 1" = 100'

December 2008



This tax map was compiled for tax administration purposes from county and township records. It does not represent a land survey.
 Barry County Land Information Services
 220 West State Street, Hastings MI 49058
 (269) 945-1292 or <http://www.barrycounty.org/>

All dimensions are from tax roll unless noted below.
 D = deeded M or S = surveyed
 SR = Surveyor's Record prior to 1915
 GLO = Government Land Office circa. 1830



08-06-029-029-00 does not exclude 25 foot wide parcel deeded to 032.
 08-06-029-032-00 needs to include extra 25 foot parcel deeded from 029

08-06-029-023-00 overlaps 020-00. See R#1148245.