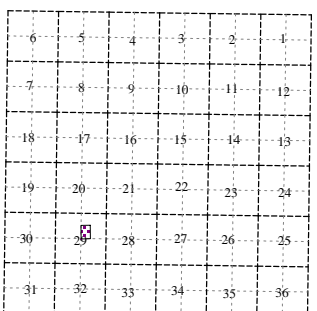
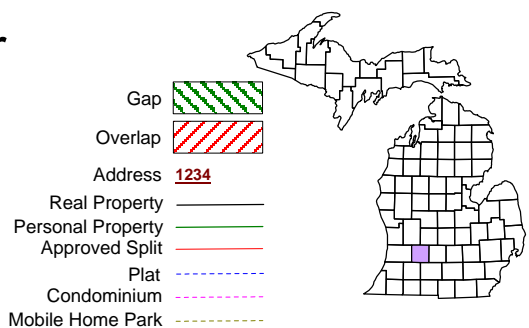


Hastings Charter Township
T 3 N R 8 W
Barry County
Michigan



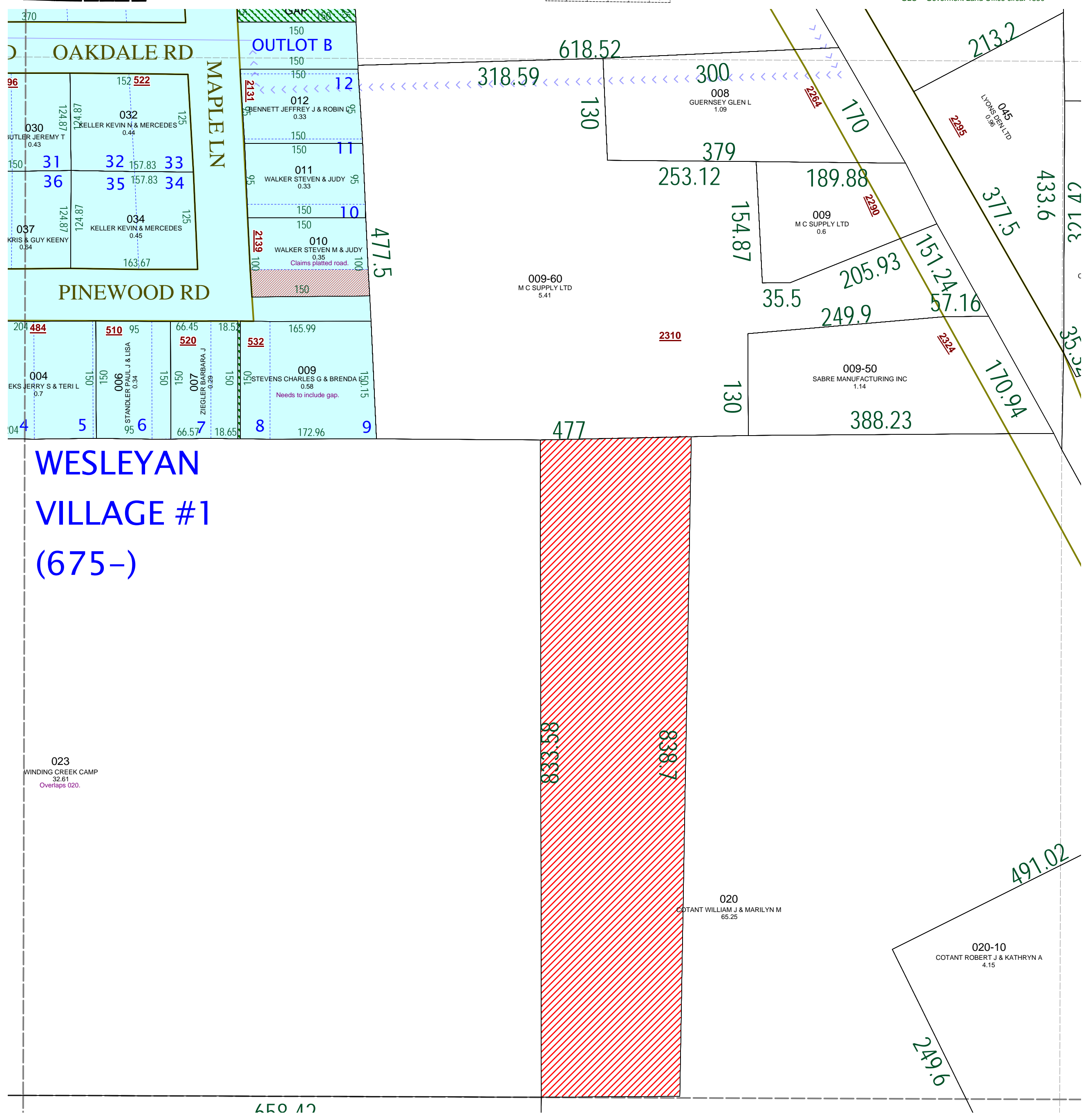
SW 1/4 NE 1/4 Section 29
08-06-029-
Scale 1" = 100'

December 2008



This tax map was compiled for tax administration purposes from county and township records. It does not represent a land survey.
Barry County Land Information Services
220 West State Street, Hastings MI 49058
(269) 945-1292 or <http://www.barrycounty.org/>

All dimensions are from tax roll unless noted below.
D = deeded M or S = surveyed
SR = Surveyor's Record prior to 1915
GLO = Government Land Office circa. 1830



08-06-675-010-00 claims part of original platted road which has not been vacated

08-06-675-009-00 needs to include gap west of property.

08-06-029-023-00 overlaps 020-00. See R#1148245.

08-06-029-020-00 has two errors, change "S89°53'20"E 65.54FT" to "S89°53'20"W 65.54FT" and "SE COR LOT 21" to "SE COR LOT 9"