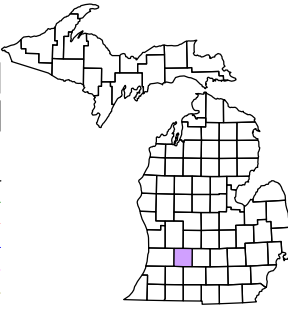


THORNAPPLE	IRVING	CARLTON	NEWLAND
YANKEE SPRINGS	RUTLAND	CASTLETON	NEEDHAM
BRIDGEVILLE	HOPE	BALTIMORE	MAPLE GROVE
PEARREVILLE	DELIN	BARRY	ASSYRIA
		ROYSTON	

Hastings Charter
Township
T 3 N R 8 W
Barry County
Michigan

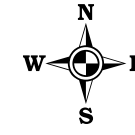
- Gap
- Overlap
- Address 1234
- Real Property
- Personal Property
- Approved Split
- Plat
- Condominium
- Mobile Home Park



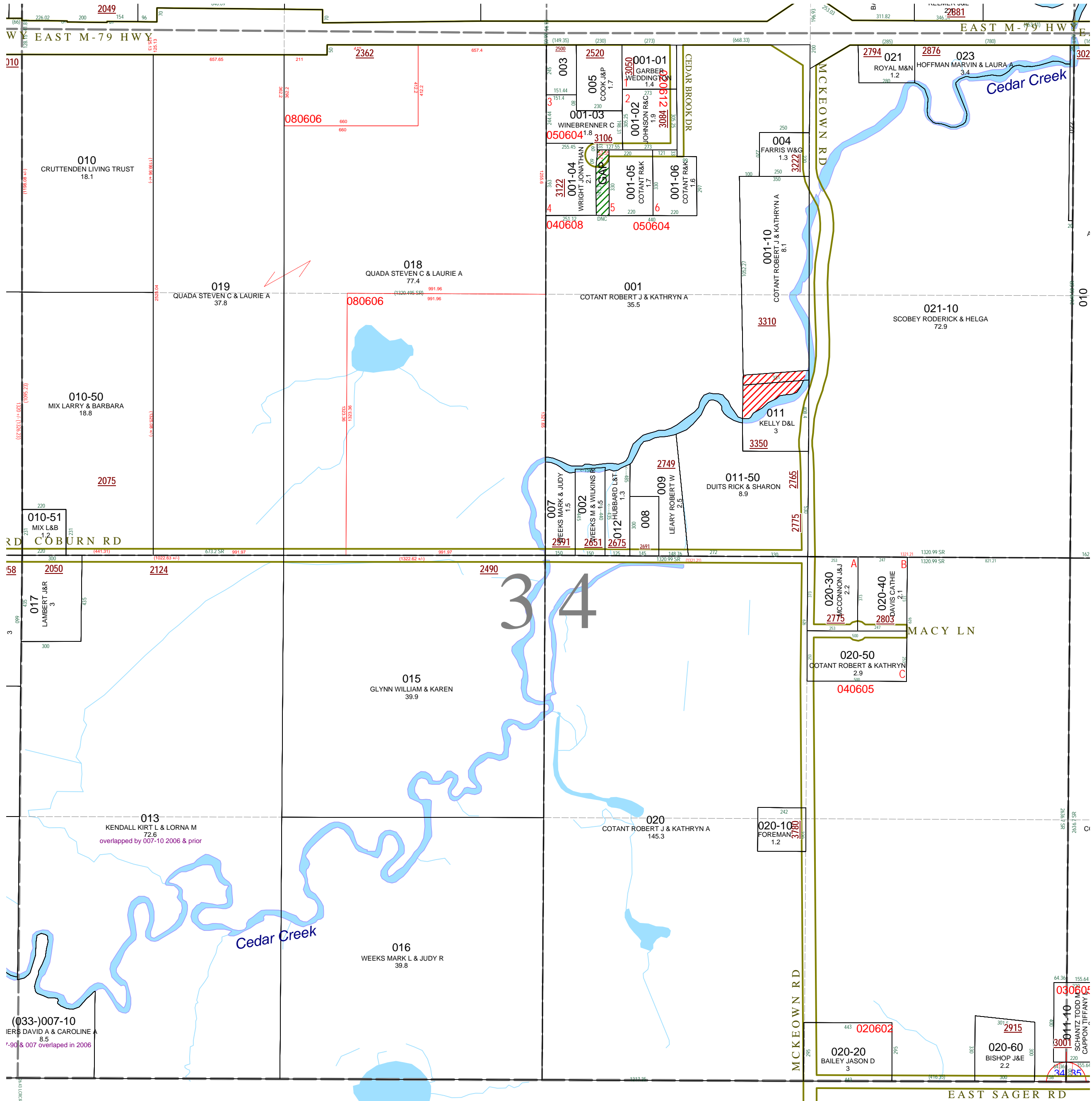
6	5	4	3	2	1
7	8	9	10	11	12
13	14	15	16	17	18
19	20	21	22	23	24
25	26	27	28	29	30
31	32	33	34	35	36

Section 34
08-06-034-
Scale 1" = 400'

This tax map was compiled for tax administration purposes from county and township records. It does not represent a land survey. Barry County Land Information Services 220 West State Street, Hastings MI 49058 (269) 945-1292 or <http://www.barrycounty.org/>



December 1997
Revised September 1999
Revised February 2001
Revised September 2002
Revised June 2003
Revised September 2004
Revised July 2006
Revised December 2008
All dimensions are from tax roll unless noted below.
D = deeded M or S = surveyed
SR = Surveyor's Record prior to 1915
GLO = Government Land Office circa. 1830



08-06-034-001-00 overlaps 011 & 001-10 and needs to include gap between 001-04 & 001-05.