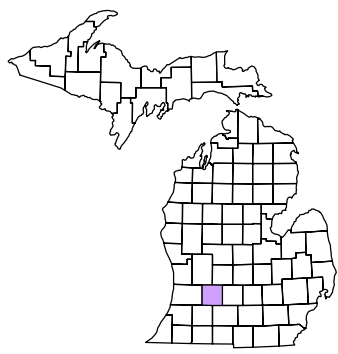


Hope Township
T 2 N R 9 W
Barry County
Michigan

- Gap
- Overlap
- Address **1234**
- Real Property
- Personal Property
- Approved Split
- Plat
- Condominium
- Mobile Home Park



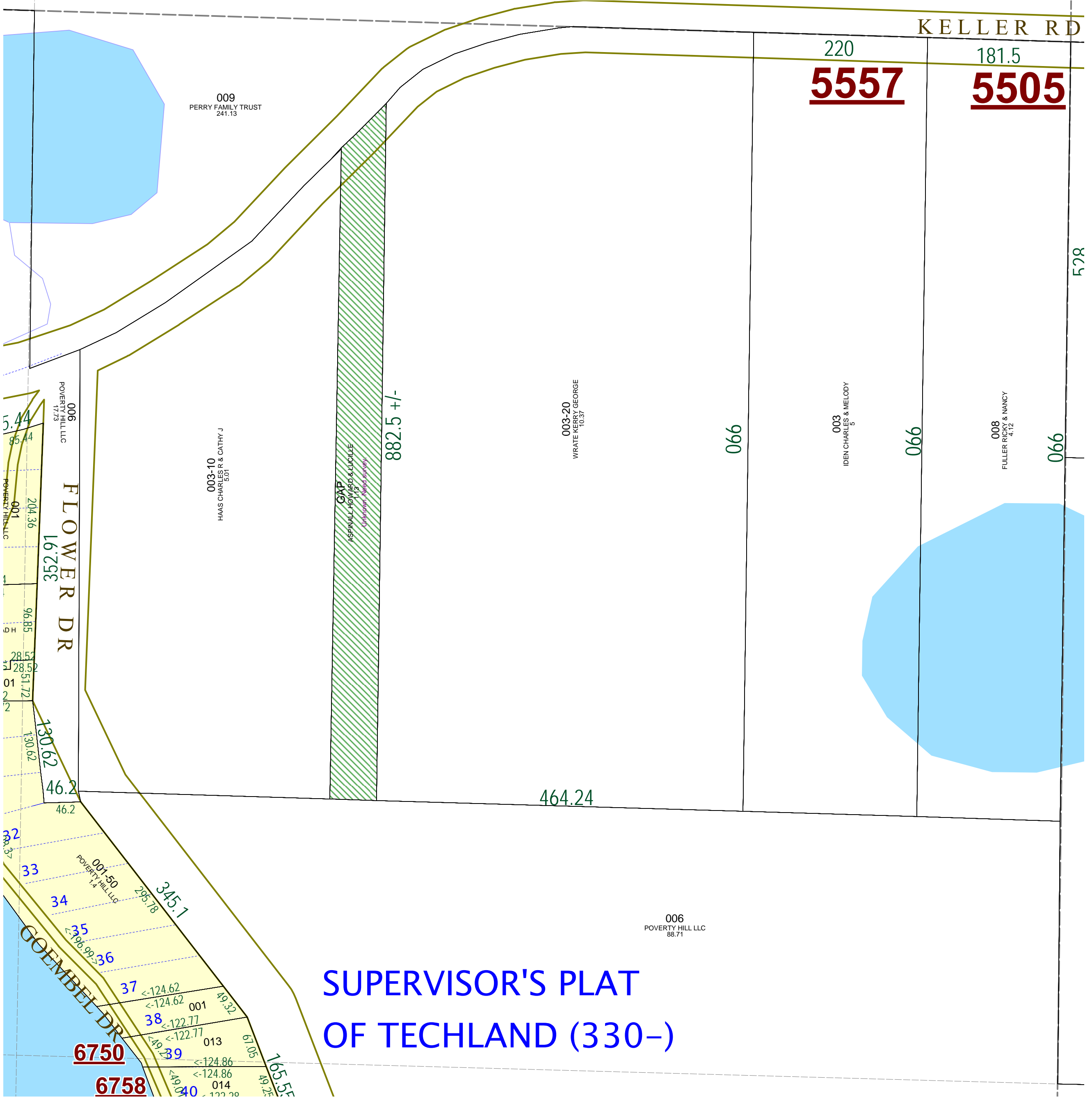
6	5	4	3	2	1
7	8	9	10	11	12
13	14	15	16	17	18
19	20	21	22	23	24
25	26	27	28	29	30
31	32	33	34	35	36

NE 1/4 SW 1/4 Section 17
08-07-017-
Scale 1"= 100'

This tax map was compiled for tax administration purposes from county and township records. It does not represent a land survey. Barry County Land Information Services 220 West State Street, Hastings MI 49058 (269) 945-1292 or <http://www.barrycounty.org/>

July 2009

All dimensions are from tax roll unless noted below.
D = deeded M or S = surveyed
SR = Surveyor's Record prior to 1915
GLO = General Land Office circa. 1830



GAP owned by Howard D. (deceased L.421-283) & Lucille Aspinall in L.266-482 in a deed from Perry. Not sold on in L.359-594 to Cutler or L.508-264 to Pummil. Looks like they duplicated an exception by subtracting 4 rods from the original 69 rods of the parcel and then also saying "except the west 4 rods" leaving approximately 66 feet as a gap

SUPERVISOR'S PLAT OF TECHLAND (330-)