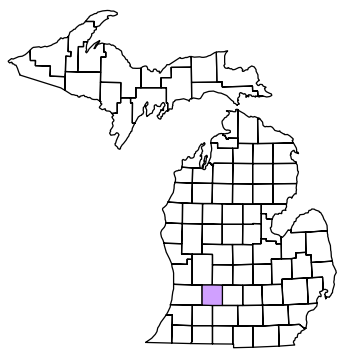


THORNAPPLE	FRANKLIN	WYOMING	WOODLAND
YANKEE	BUTLAND	HASTINGS	CASTLETON
ORANGEVILLE	BARRETT	BALTIMORE	MAPLE GROVE
PEARREVILLE	ROBINSTOWN	ASSYRIA	

Hope Township
T 2 N R 9 W
Barry County
Michigan

Legend:

- Gap (Green diagonal lines)
- Overlap (Red diagonal lines)
- Address (1234)
- Real Property (Solid black line)
- Personal Property (Dashed black line)
- Approved Split (Dotted black line)
- Plat (Dashed blue line)
- Condominium (Dotted red line)
- Mobile Home Park (Dotted yellow line)



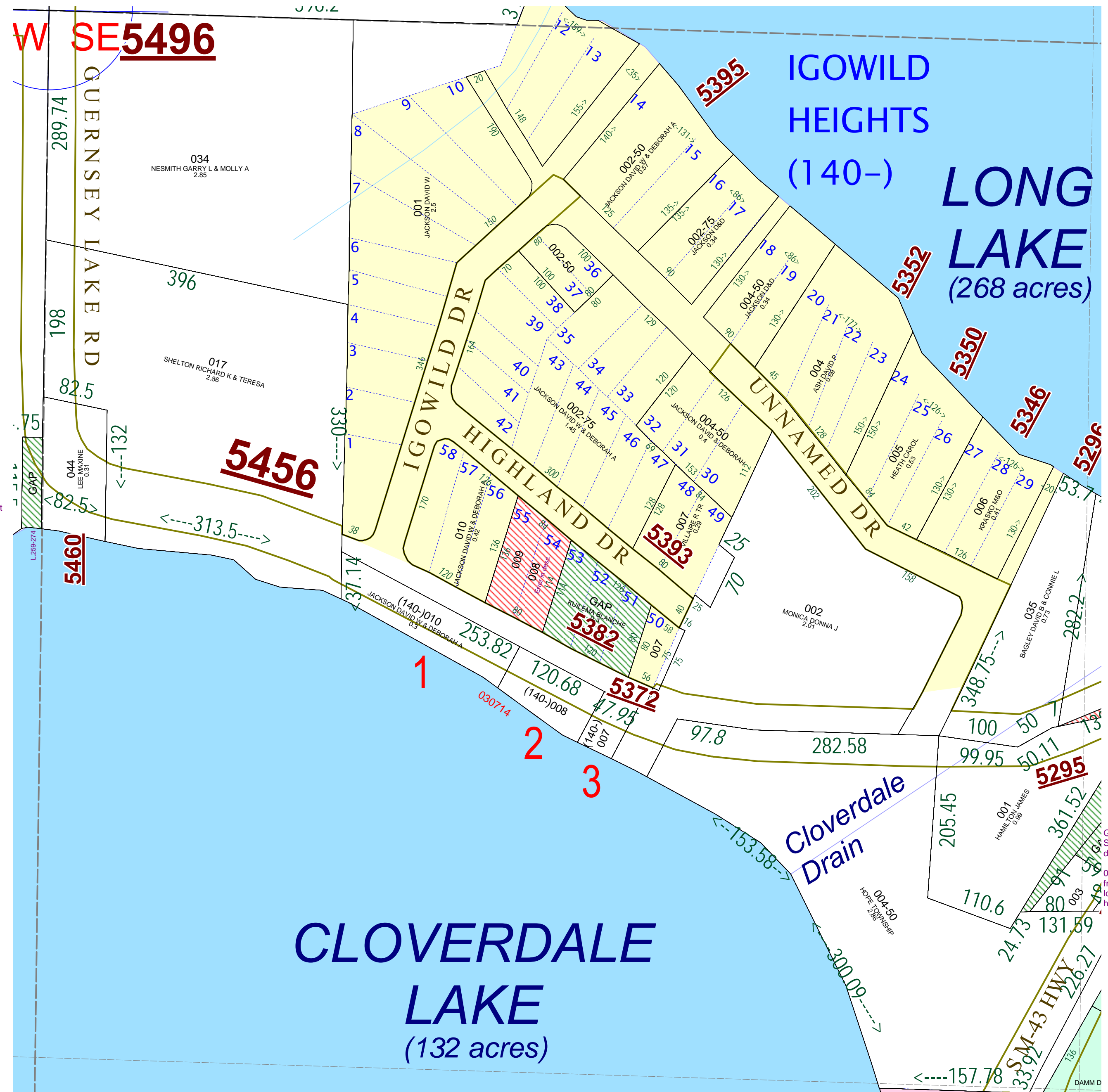
6	5	4	3	2	1
7	8	9	10	11	12
18	17	16	15	14	13
19	20	21	22	23	24
30	29	28	27	26	25
31	32	33	34	35	36

NW 1/4 SE 1/4 Section 20
08-07-020-
Scale 1"= 100'

August 2009

All dimensions are from tax roll unless noted below.
D = deeded M or S = surveyed
SR = Surveyor's Record prior to 1915
GLO = General Land Office circa. 1830

This tax map was compiled for tax administration purposes from county and township records. It does not represent a land survey. Barry County Land Information Services 220 West State Street, Hastings MI 49058 (269) 945-1292 or <http://www.barrycounty.org/>



08-07-140-008-00 overlaps has 009 because it has the wrong lot numbers.

GAP owned by Harry H. Jones & Juanita J. Schanable in L.369-662, excluding surveyed sale description of 001.

08-07-020-003-00 has point of beginning problem from deeds. They call the north corner (6 sided lot) of lot 8, the northeast corner of lot 8. It also has incorrect bearing on southernmost piece.