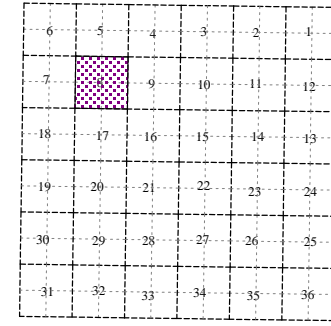
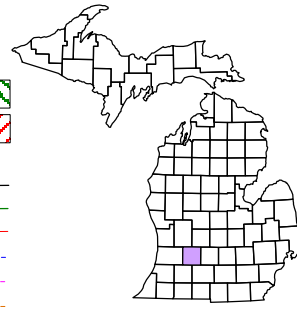


Maple Grove Township
T 2 N R 7 W
Barry County
Michigan

- Gap
- Overlap
- Address **12345**
- Real Property
- Personal Property
- Approved Split
- Plat
- Condominium
- Mobile Home Park



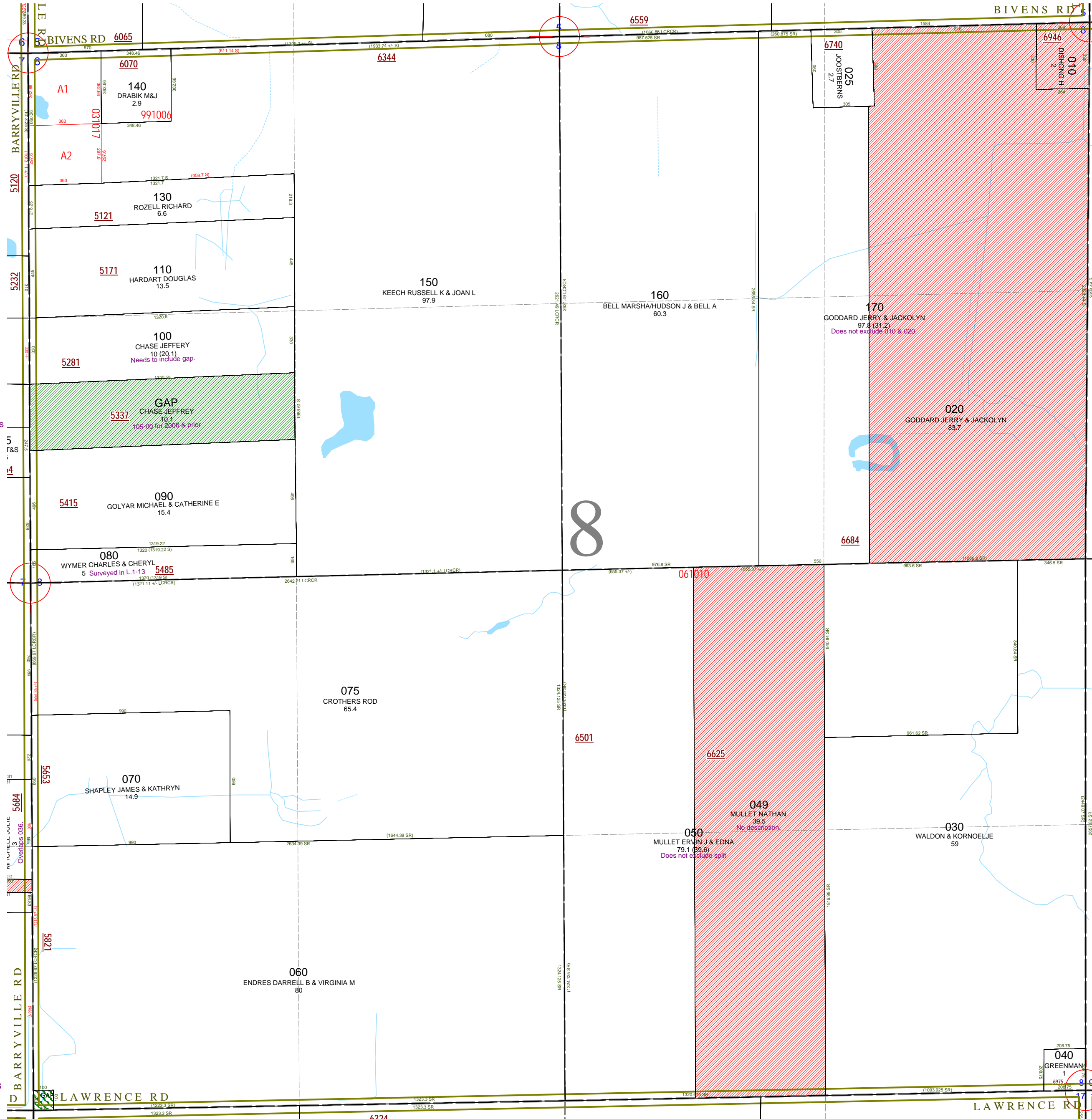
Section 8
08-10-008-
Scale 1" = 400'

This tax map was compiled for tax administration purposes from county and township records. It does not represent a land survey. Barry County Land Information Services 220 West State Street, Hastings MI 49058 (269) 945-1292 or <http://www.barrycounty.org/>



December 1997
Revised February 2000
Revised December 2001
Revised March 2003
Revised June 2004
Revised June 2006
Revised February 2008

All dimensions are from tax roll unless noted below.
D = deeded M or S = surveyed
SR = Surveyor's Record prior to 1915
GLO = Government Land Office circa. 1830



08-10-008-100-00 was a combination made with former 105 without fixing description. Parcel needs to include gap parcel to its south according to assessed acreage and owners name.

08-10-008-080-00 lot dimension do not match deed. Parcel has been surveyed in L.1-13.

GAP in the southwest corner owned by John T. Mangan in L.523-587, not made joint in L.523-588 and not sold to Endres in L.586-259.

08-10-008-170-00 overlaps 010 & 020 because it omits the very first line of its description which specifies that it is only the west 550 feet.

08-10-008-049-00 has no tax description. Parcel is described as east split of #061010.

08-10-008-050-00 needs to exclude split to 049. Remainder is described as west split of #061010.