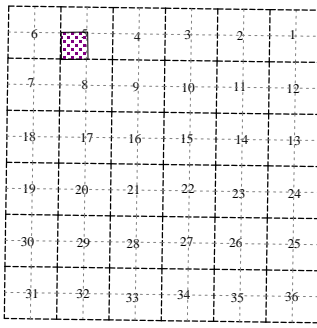
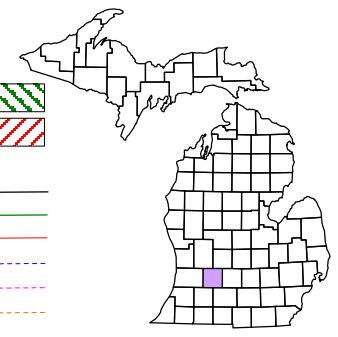
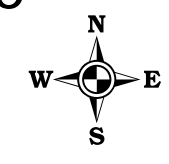


**Orangeville Township**  
**T 2 N R 10 W**  
**Barry County**  
**Michigan**

- Gap
- Overlap
- Address
- Real Property
- Personal Property
- Approved Split
- Plat
- Condominium
- Mobile Home Park



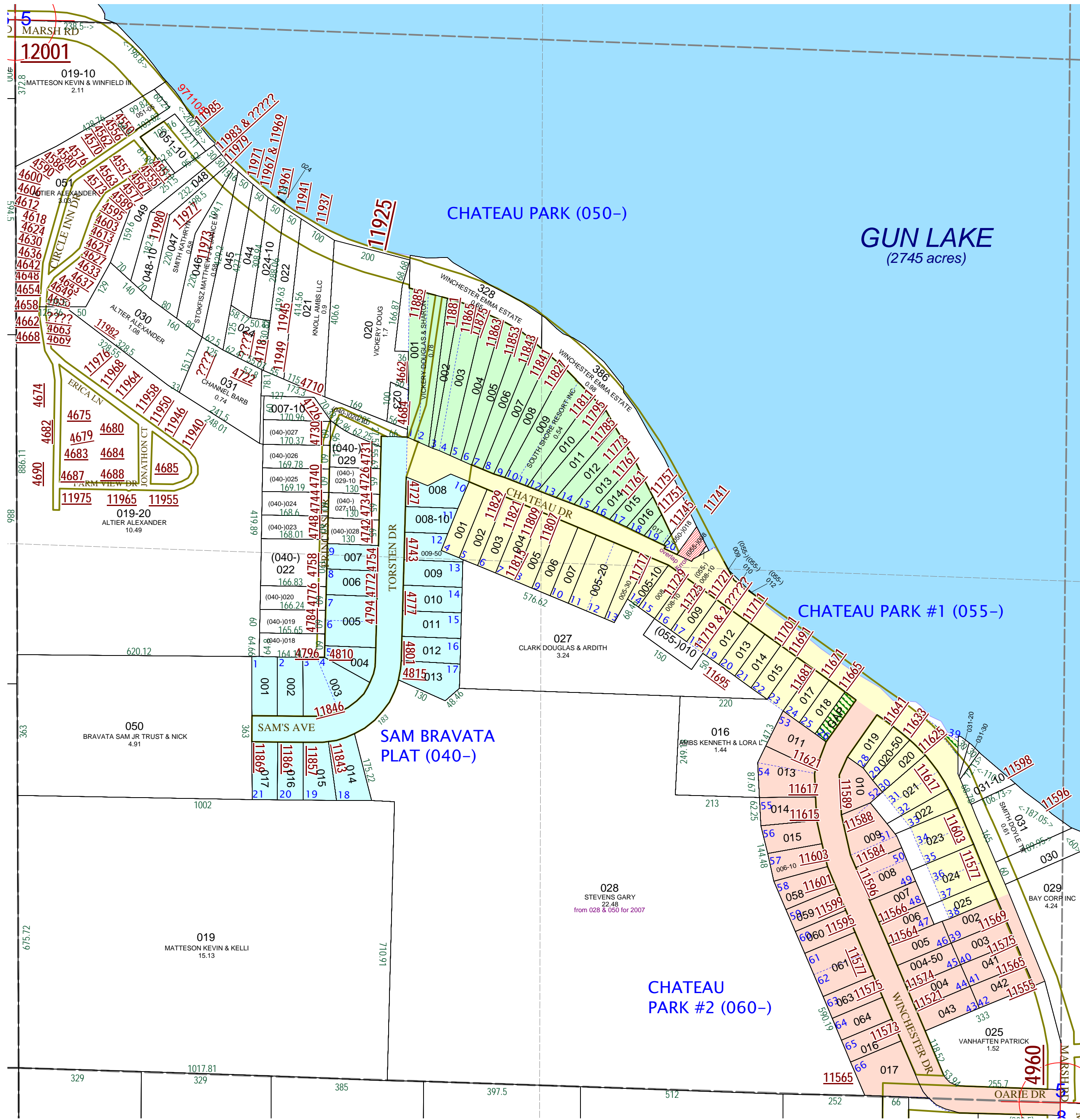
**SW 1/4 Section 5**  
**08-11-005-**  
**Scale 1"= 200'**



December 1999  
 Revised August 2001  
 Revised March 2003  
 Revised July 2004  
 Revised March 2006  
 Revised April 2008

This tax map was compiled for tax administration purposes from county and township records. It does not represent a land survey.  
 Barry County Land Information Services  
 220 West State Street, Hastings MI 49058  
 (269) 945-1292 or <http://www.barrycounty.org/>

All dimensions are from tax roll unless noted below.  
 D = deeded M or S = surveyed  
 SR = Surveyor's Record prior to 1915  
 GLO = Government Land Office circa. 1830



08-11-055-008-00 overlaps 08-11-050-018-00 and as a result of judgment in L.634-927 should include lakefront in front of lot 16 not lot 15.  
 08-11-055-008-10 as a result of judgment in L.634-927 should include lakefront excluding portion designated to lot 15.