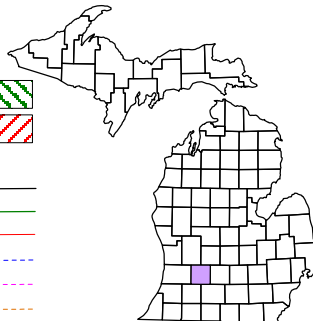


Orangeville Township
T 2 N R 10 W
Barry County
Michigan

- Gap
- Overlap
- Address
- Real Property
- Personal Property
- Approved Split
- Plat
- Condominium
- Mobile Home Park



1	2	3	4	5	6	7	8	9	10	11	12
13	14	15	16	17	18	19	20	21	22	23	24
25	26	27	28	29	30	31	32	33	34	35	36

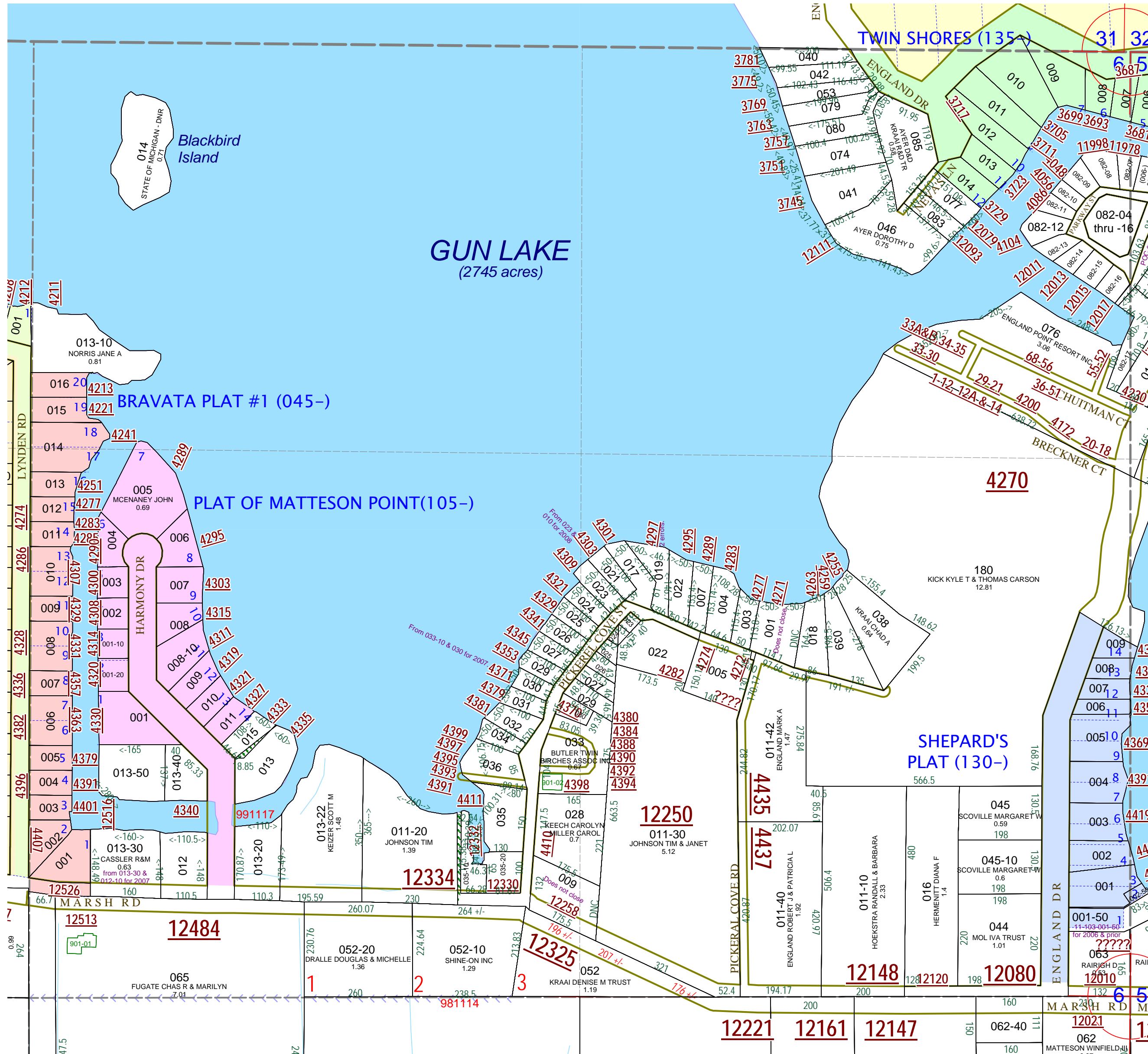
NE 1/4 Section 6
08-11-006-
Scale 1" = 200'

This tax map was compiled for tax administration purposes from county and township records. It does not represent a land survey. Barry County Land Information Services 220 West State Street, Hastings MI 49058 (269) 945-1292 or <http://www.barrycounty.org/>



December 1999
Revised August 2001
Revised March 2003
Revised July 2004
Revised March 2006
Revised April 2008

All dimensions are from tax roll unless noted below.
D = deeded M or S = surveyed
SR = Surveyor's Record prior to 1915
GLO = Government Land Office circa. 1830



08-11-006-009-00 does not close and as deeded overlaps 028-00 and has done so for decades.

08-11-006-019-00 has an error in first course and is missing the second course and last course in first description.
08-11-006-001-00 does not close because it overshoots last course.