

Orangeville Township
T 2 N R 10 W
Barry County
Michigan

- Gap
- Overlap
- Address
- Real Property
- Personal Property
- Approved Split
- Plat
- Condominium
- Mobile Home Park

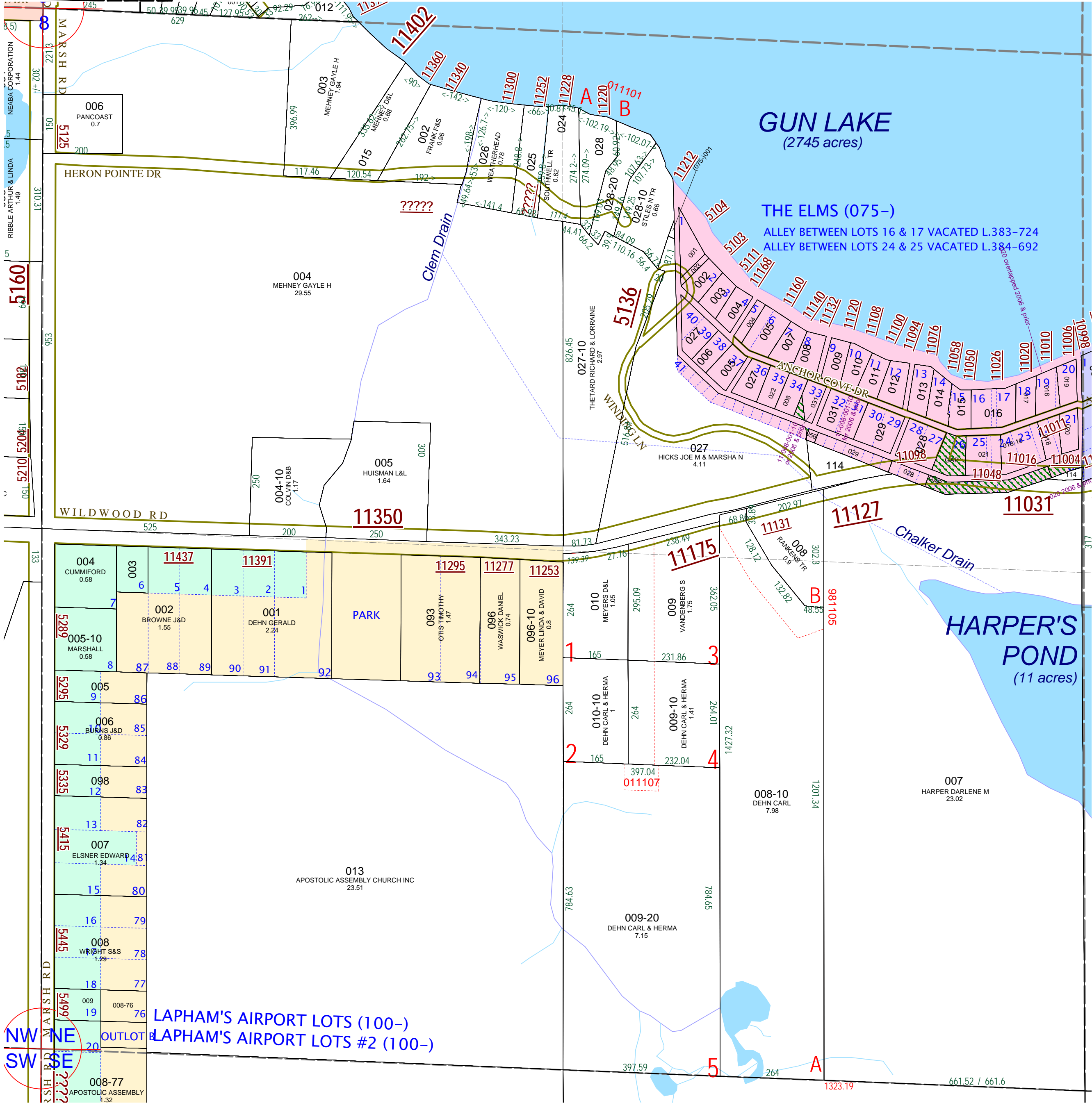
6	5	4	3	2	1
7	8	9	10	11	12
13	14	15	16	17	18
19	20	21	22	23	24
25	26	27	28	29	30
31	32	33	34	35	36

NE 1/4 Section 8
08-11-008-
Scale 1" = 200'



December 1999
Revised August 2001
Revised March 2003
Revised July 2004
Revised March 2006
Revised April 2008

All dimensions are from tax roll unless noted below.
D = deeded M or S = surveyed
SR = Surveyor's Record prior to 1915
GLO = Government Land Office circa. 1830



08-11-075-018-00 has some misplaced commas and a is missing a course direction.

GAP owned by Charles F. Brower in L.418-124. Most of the property is under the road, but some of it is in 007's front yard.

NW NE
SW SE
LAPHAM'S AIRPORT LOTS (100-)
LAPHAM'S AIRPORT LOTS #2 (100-)