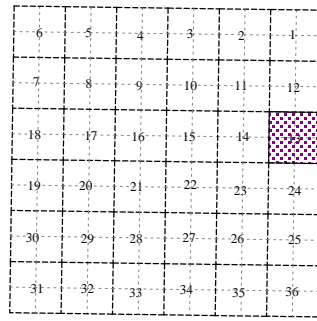
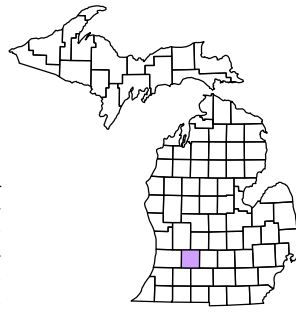


Orangeville Township
T 2 N R 10 W
Barry County
Michigan

- Gap
- Overlap
- Address
- Real Property
- Personal Property
- Approved Split
- Plat
- Condominium
- Mobile Home Park



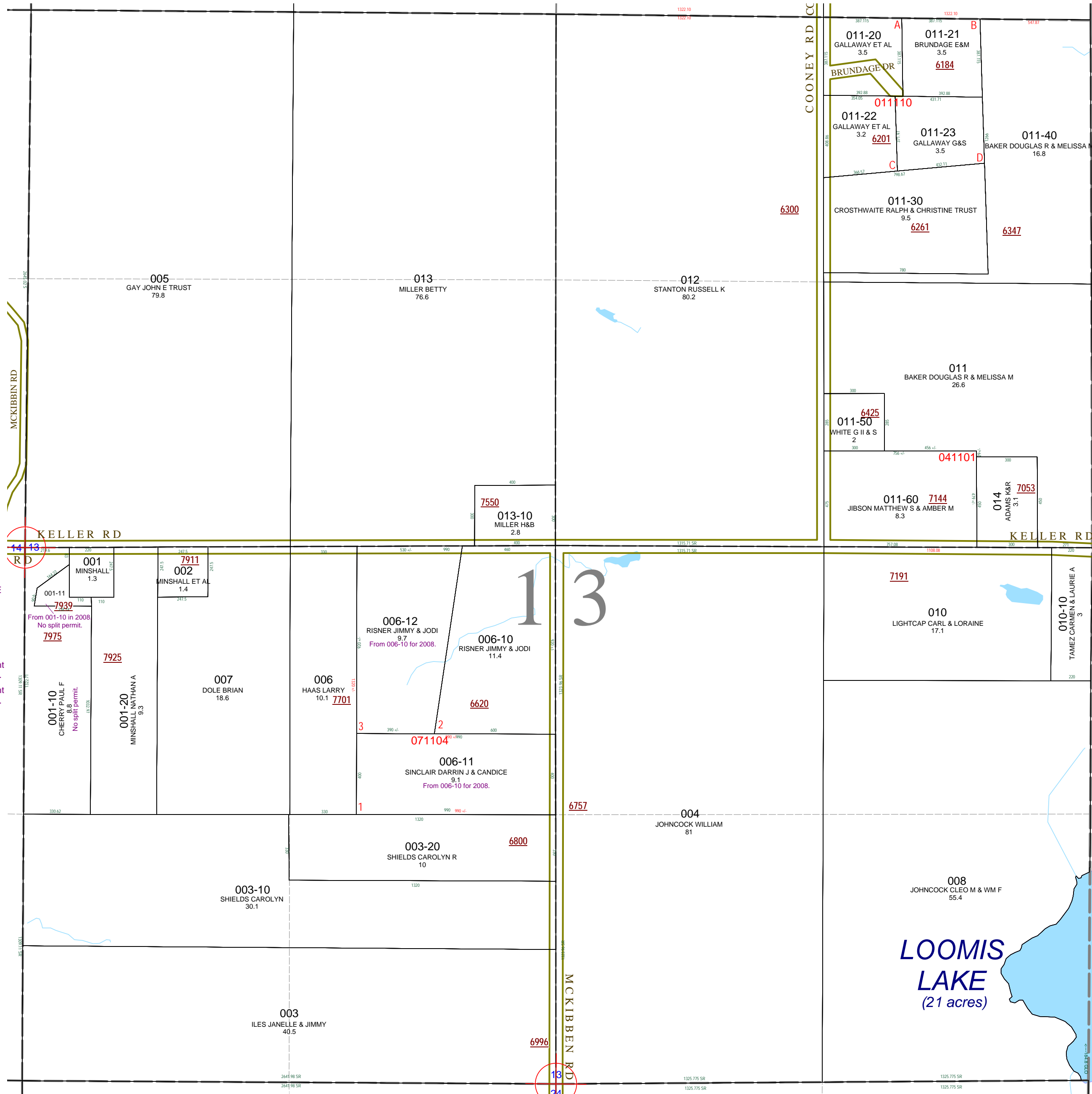
Section 13
08-11-013-
Scale 1" = 400'

This tax map was compiled for tax administration purposes from county and township records. It does not represent a land survey.
Barry County Land Information Services
220 West State Street, Hastings MI 49058
(269) 945-1292 or <http://www.barrycounty.org/>



September 1997
Revised December 1999
Revised August 2001
Revised April 2003
Revised July 2004
Revised March 2006
Revised April 2008

All dimensions are from tax roll unless noted below.
D = deeded M or S = surveyed
SR = Surveyor's Record prior to 1915
GLO = Government Land Office circa. 1830



08-11-013-001-11 has a typo, change "TH S 89°44'48" E 219.60" to "TH S89°44'48"E 219.6FT"

08-11-013-006-12 is missing some important details in the description. See split #071104.
08-11-013-006-10 is missing some important details in the description. See split #071104.

13
24