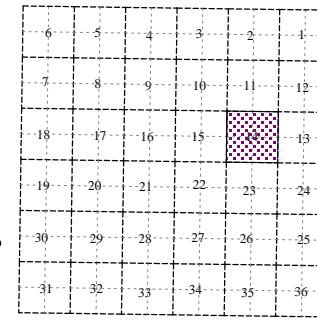
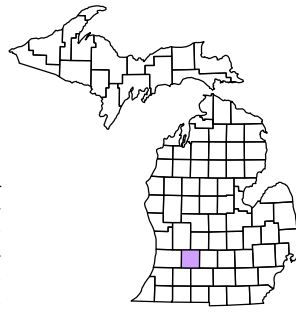


Orangeville Township  
T 2 N R 10 W  
Barry County  
Michigan

- Gap
- Overlap
- Address
- Real Property
- Personal Property
- Approved Split
- Plat
- Condominium
- Mobile Home Park



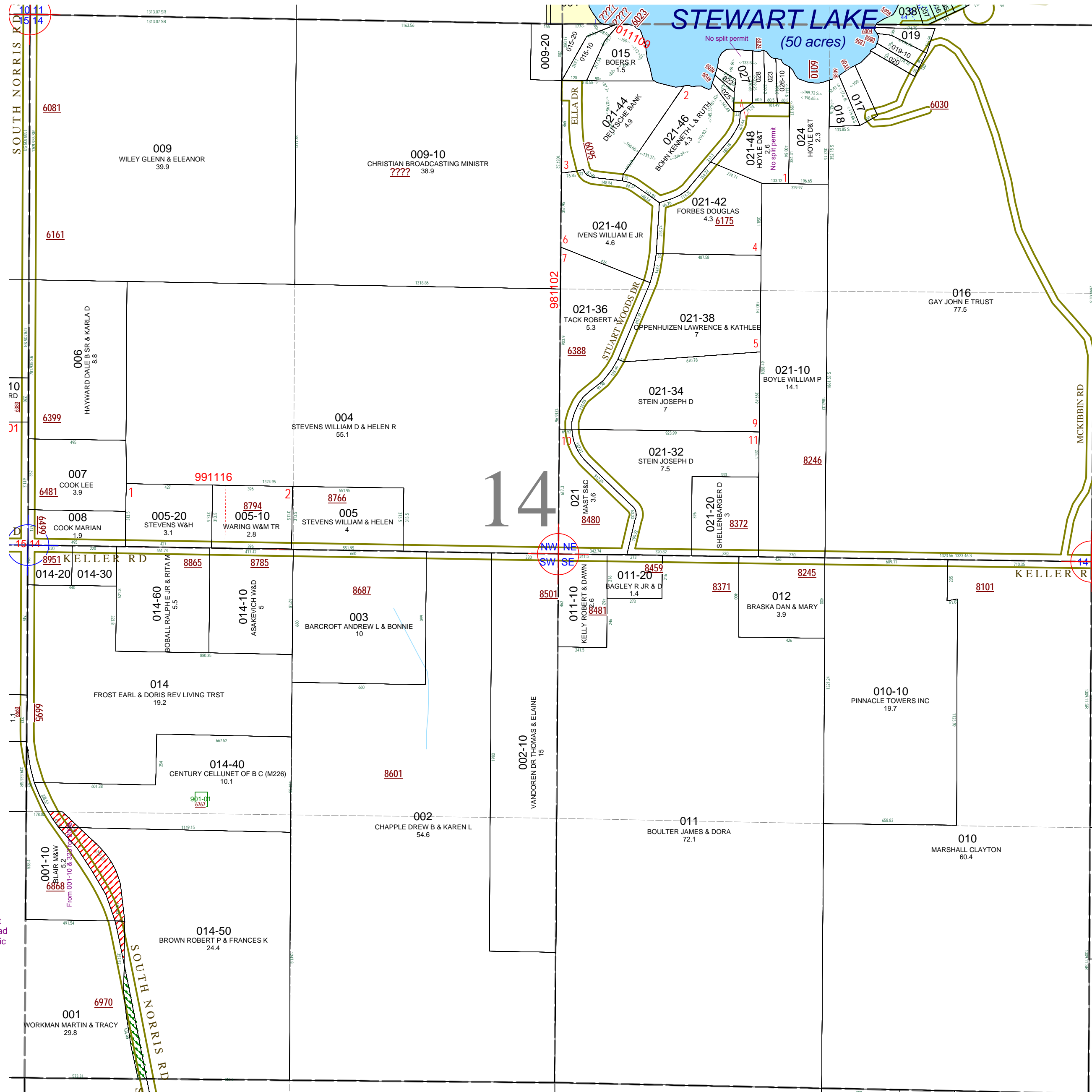
Section 14  
08-11-014-  
Scale 1" = 400'

This tax map was compiled for tax administration purposes from county and township records. It does not represent a land survey.  
Barry County Land Information Services  
220 West State Street, Hastings MI 49058  
(269) 945-1292 or <http://www.barrycounty.org/>



September 1997  
Revised December 1999  
Revised August 2001  
Revised April 2003  
Revised July 2004  
Revised March 2006  
Revised April 2008

All dimensions are from tax roll unless noted below.  
D = deeded M or S = surveyed  
SR = Surveyor's Record prior to 1915  
GLO = Government Land Office circa. 1830



08-11-014-001-00 versus 014-50 overlap cannot be resolved because one party describes the road as traveled now and the other describes a historic roadbed by survey.