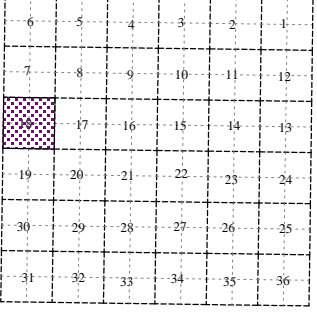
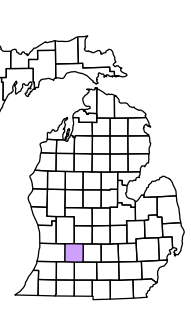


Orangeville Township
T 2 N R 10 W
Barry County
Michigan

- Gap
- Overlap
- Address
- Real Property
- Personal Property
- Approved Split
- Plat
- Condominium
- Mobile Home Park



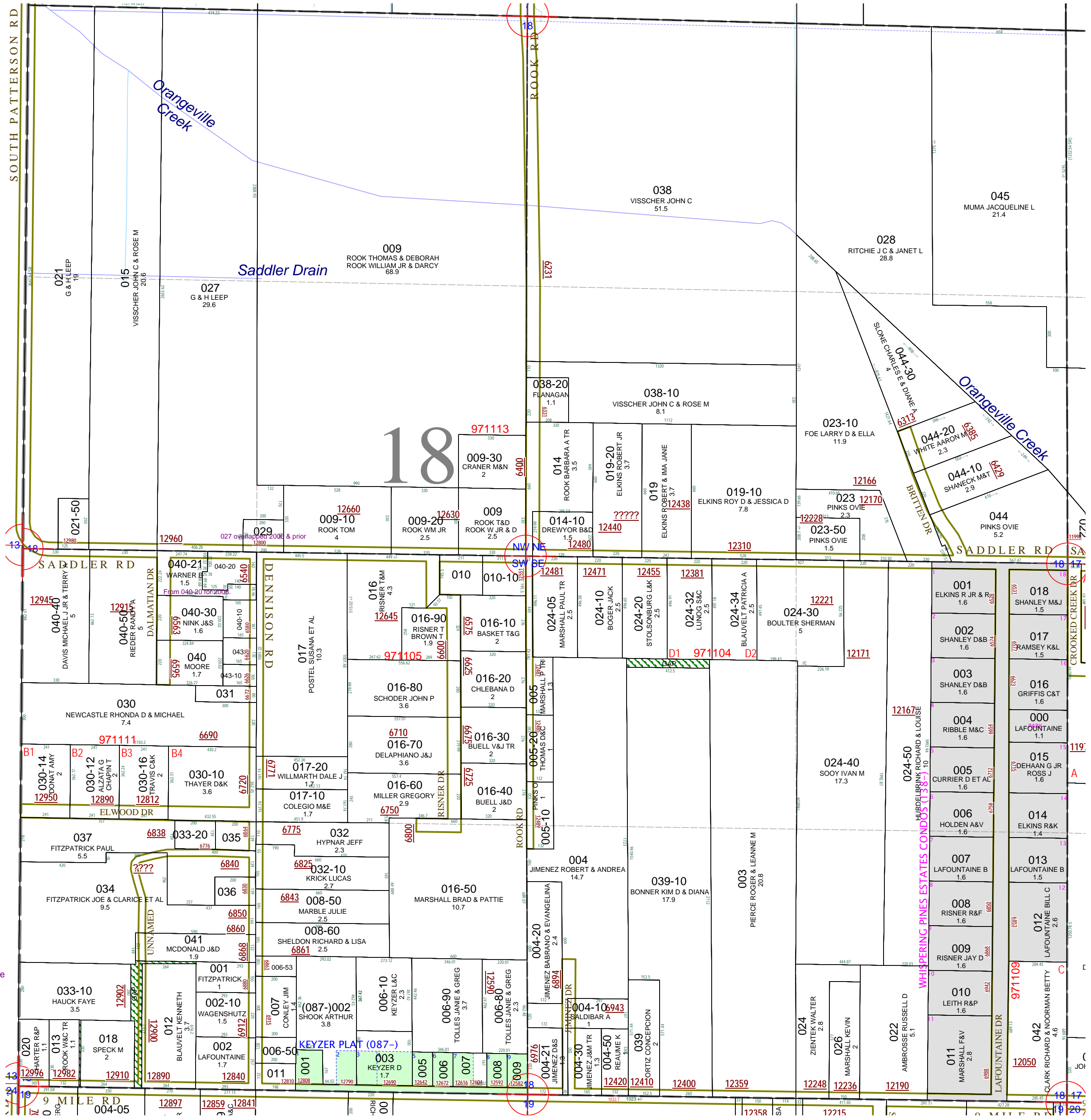
Section 18
08-11-018-
Scale 1" = 400'

This tax map was compiled for tax administration purposes from county and township records. It does not represent a land survey. Barry County Land Information Services 220 West State Street, Hastings MI 49058 (269) 945-1292 or <http://www.barrycounty.org/>



September 1997
Revised December 1999
Revised August 2001
Revised April 2003
Revised July 2004
Revised March 2006
Revised May 2008

All dimensions are from tax roll unless noted below.
D = deeded M or S = surveyed
SR = Surveyor's Record prior to 1915
GLO = Government Land Office circa. 1830



GAP owned by Chalmers A. Monteith & Blanche Ladd in L.179-566 conveying all property in the S 1/2 SW 1/4 SW 1/4 not previously deeded and excepting deed to Blauvelt in L.277-465.

GAP owned by Evert Tiller in L.258-430 and not sold on to Wild in L.271-141 (bad math).