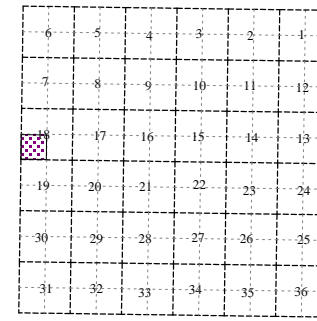
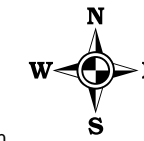


Orangeville Township
T 2 N R 10 W
Barry County
Michigan

- Gap
- Overlap
- Address
- Real Property
- Personal Property
- Approved Split
- Plat
- Condominium
- Mobile Home Park



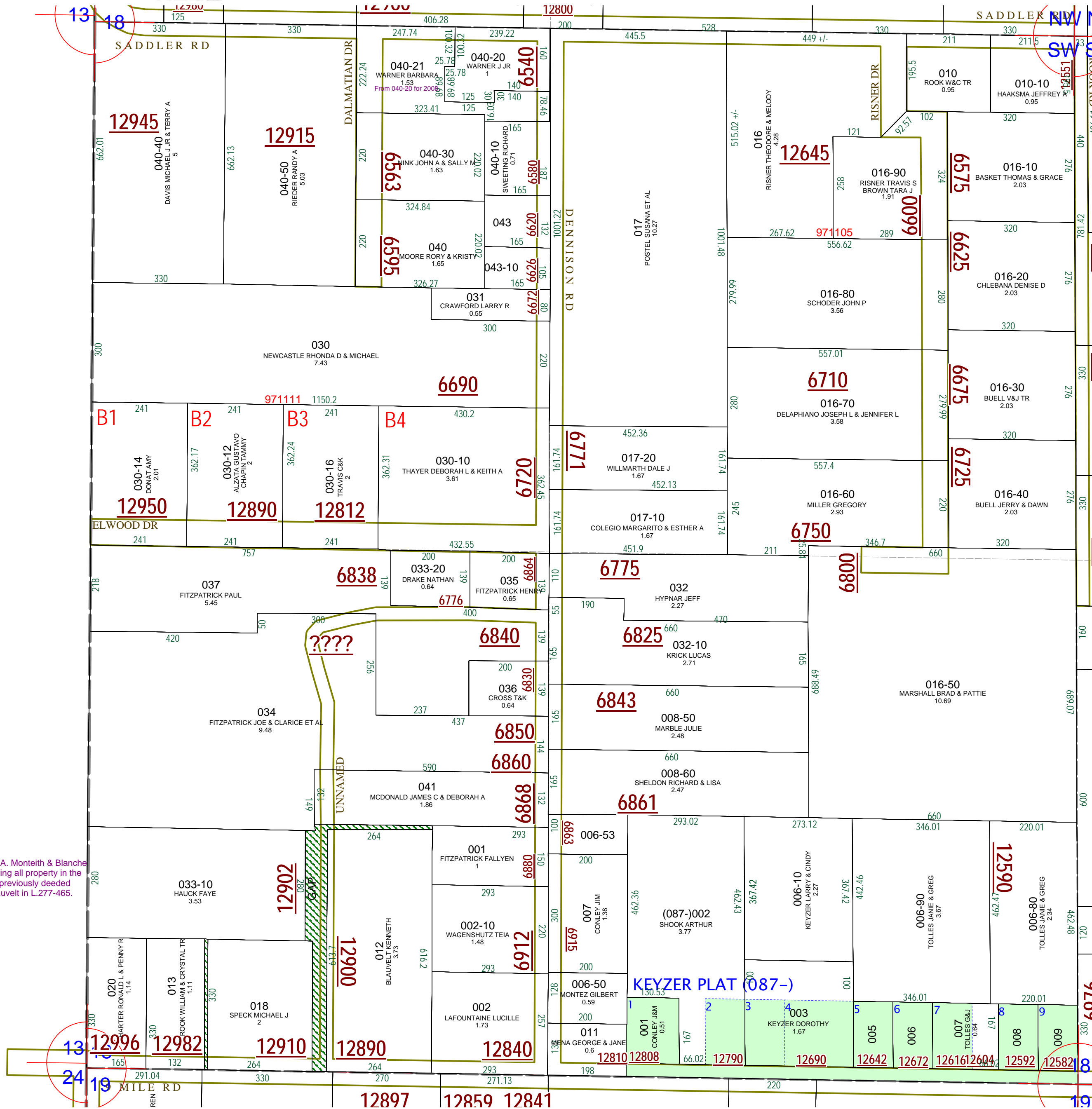
SW 1/4 Section 18
08-11-018-
Scale 1" = 200'



December 1999
Revised August 2001
Revised March 2003
Revised April 2008

This tax map was compiled for tax administration purposes from county and township records. It does not represent a land survey.
Barry County Land Information Services
220 West State Street, Hastings MI 49058
(269) 945-1292 or <http://www.barrycounty.org/>

All dimensions are from tax roll unless noted below.
D = deeded M or S = surveyed
SR = Surveyor's Record prior to 1915
GLO = Government Land Office circa. 1830



GAP owned by Chalmers A. Monteith & Blanche Ladd in L.179-566 conveying all property in the S 1/2 SW 1/4 SW 1/4 not previously deeded and excepting deed to Blauvelt in L.277-465.

13
24
19

13
19