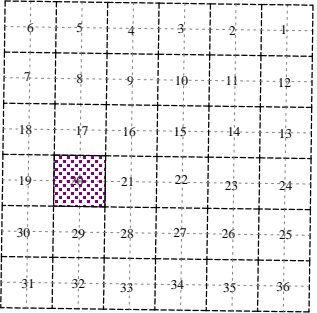
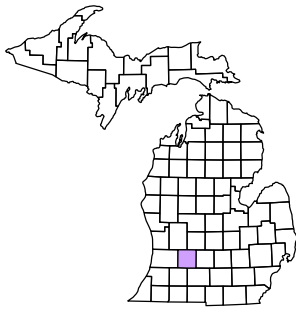


Orangeville Township
T 2 N R 10 W
Barry County
Michigan

- Gap
- Overlap
- Address
- Real Property
- Personal Property
- Approved Split
- Plat
- Condominium
- Mobile Home Park



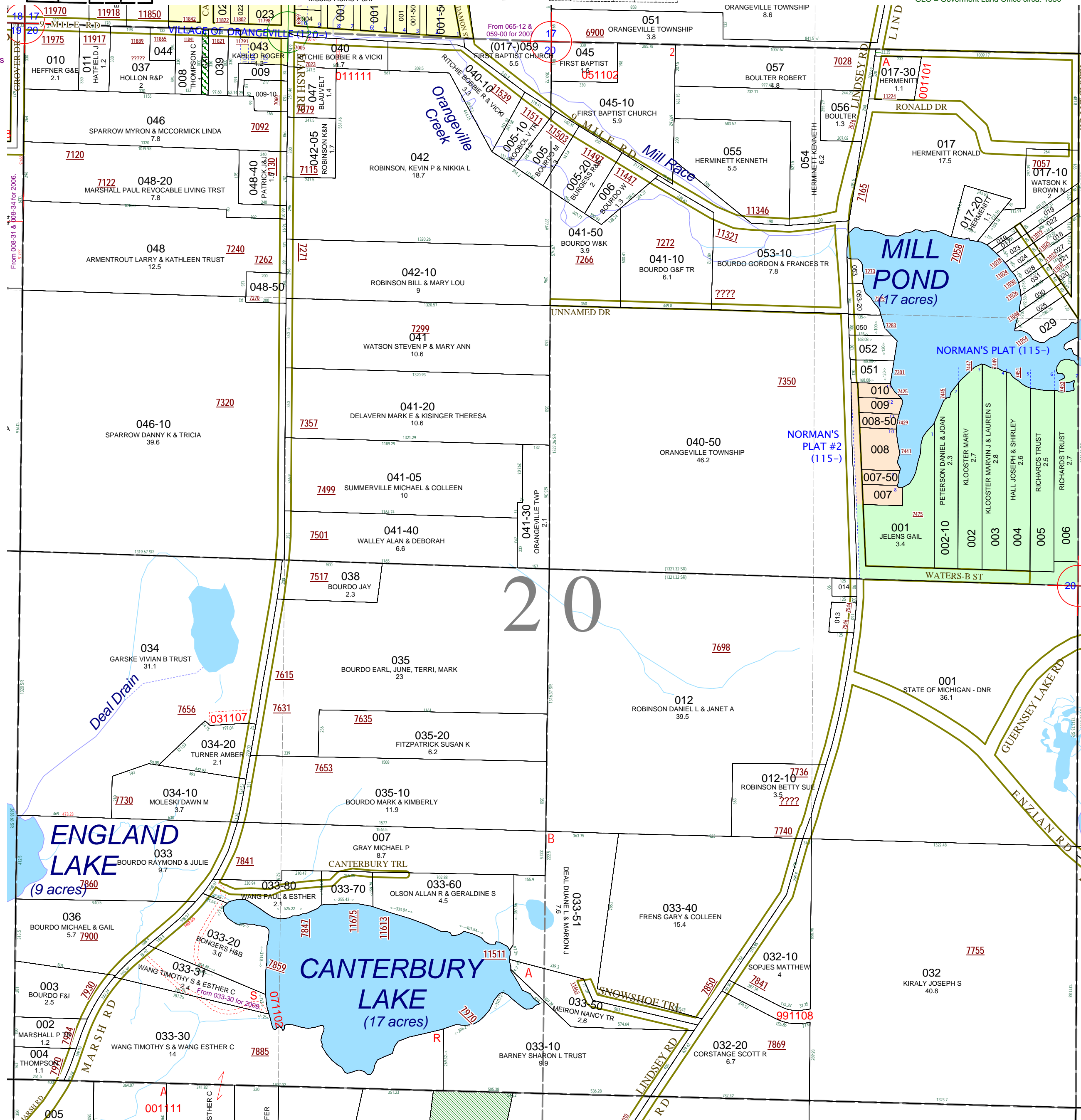
Section 20
08-11-020-
Scale 1" = 400'



September 1997
Revised December 1999
Revised August 2001
Revised April 2003
Revised July 2004
Revised March 2006
Revised May 2008

All dimensions are from tax roll unless noted below.
D = deeded M or S = surveyed
SR = Surveyor's Record prior to 1915
GLO = Government Land Office circa. 1830

GAP owned by Squire M. Nichols in L.P-578 and not sold on in the partition of lots. Looks like it was an alley back in the 1800's but no longer used as such.



08-11-020-019-00 needs to add the following line to the end: "INTENDING TO EXTEND TO SHORE OF MILL POND"