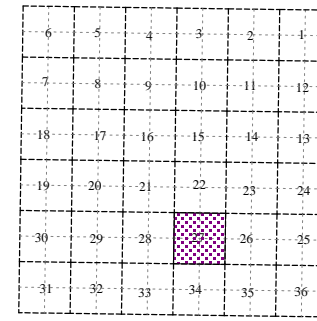
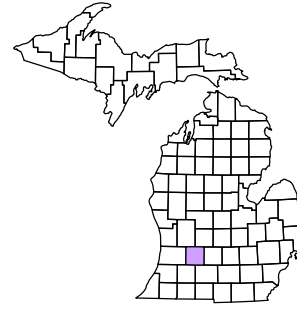


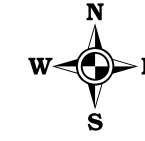
Orangeville Township  
T 2 N R 10 W  
Barry County  
Michigan

- Gap
- Overlap
- Address
- Real Property
- Approved Split
- Plat
- Condominium
- Mobile Home Park



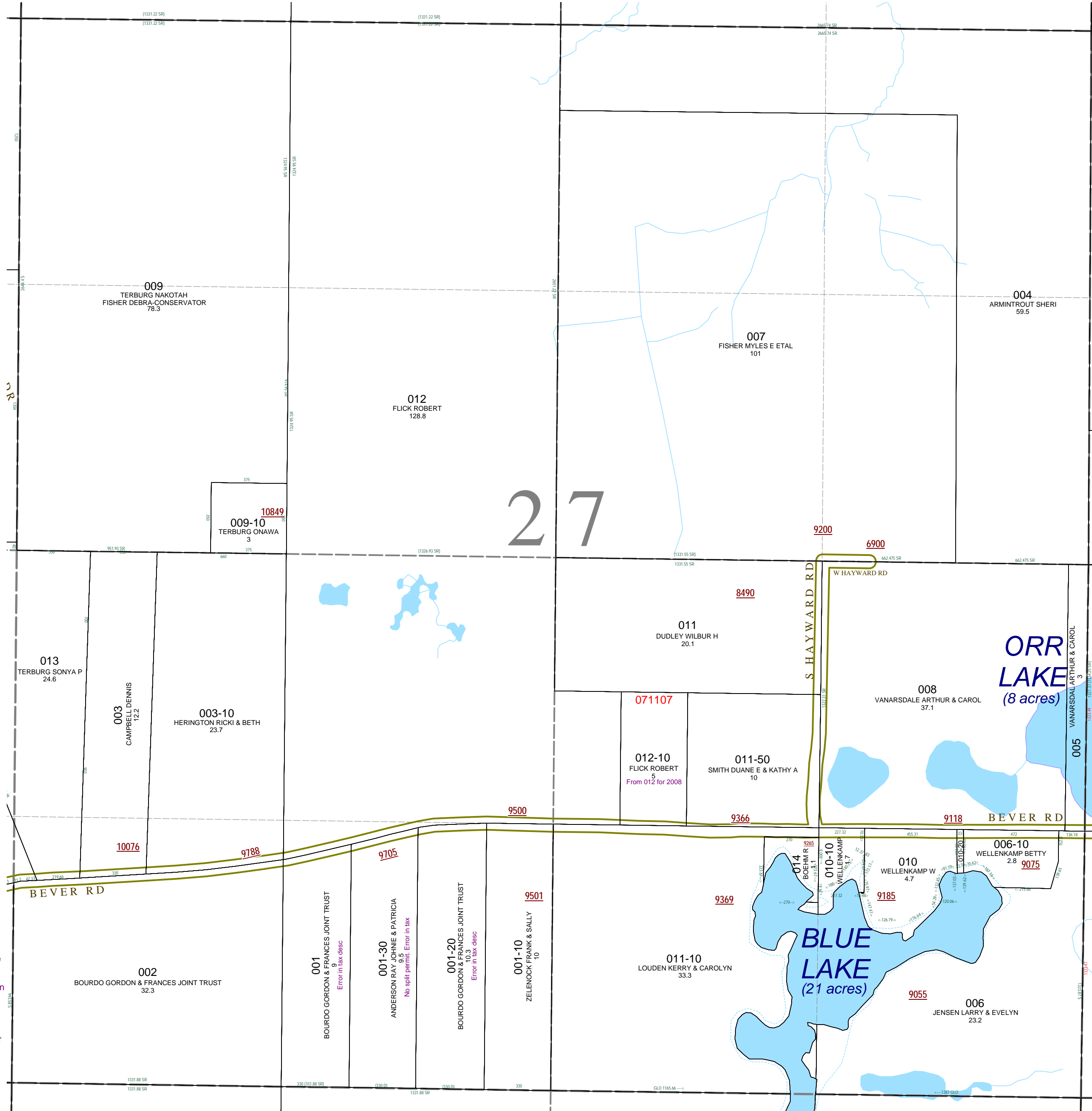
Section 27  
08-11-027-  
Scale 1" = 400'

This tax map was compiled for tax administration purposes from county and township records. It does not represent a land survey. Barry County Land Information Services 220 West State Street, Hastings MI 49058 (269) 945-1292 or <http://www.barrycounty.org/>



September 1997  
Revised December 1999  
Revised August 2001  
Revised April 2003  
Revised July 2004  
Revised March 2006  
Revised May 2008

All dimensions are from tax roll unless noted below.  
D = deeded M or S = surveyed  
SR = Surveyor's Record prior to 1915  
GLO = Government Land Office circa. 1830



08-11-027-001-20 is from an unrecorded land contract which an attorney brought to my attention and its description is different than the assessment description.

08-11-027-001-30 is from an unapproved split in R#1040772 and its description is different than the tax roll.

08-11-027-001-00 should be described as the remainder of its splits because section is longer E-W than a standard section