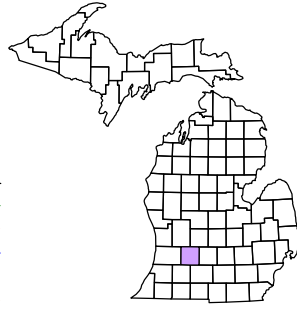


Orangeville Township
T 2 N R 10 W
Barry County
Michigan

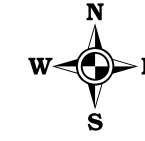
- Gap
- Overlap
- Address
- Real Property
- Personal Property
- Approved Split
- Plat
- Condominium
- Mobile Home Park



6	5	4	3	2	1
7	8	9	10	11	12
13	14	15	16	17	18
19	20	21	22	23	24
25	26	27	28	29	30
31	32	33	34	35	

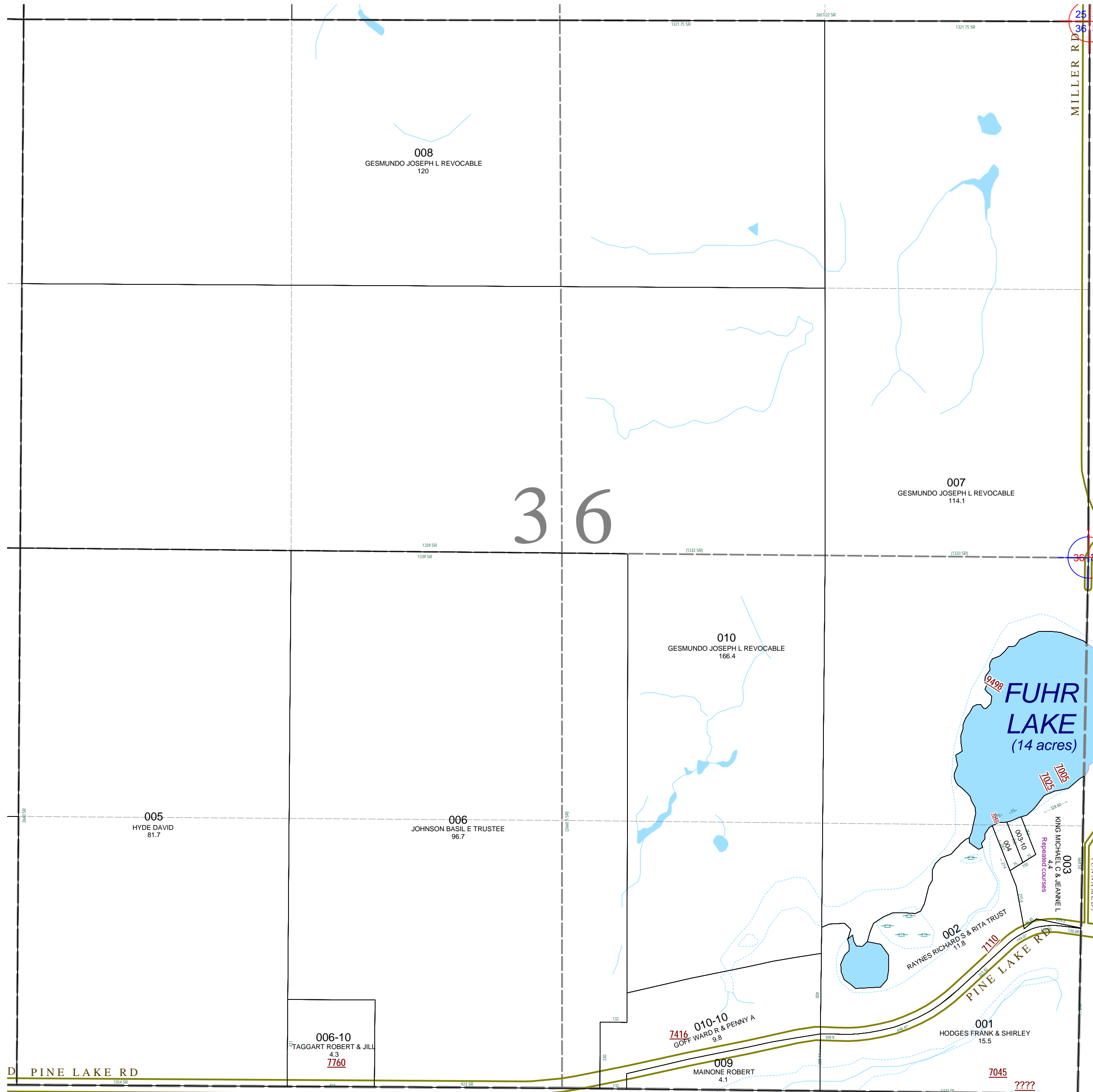
Section 36
08-11-036-
Scale 1" = 400'

This tax map was compiled for tax administration purposes from county and township records. It does not represent a land survey.
Barry County Land Information Services
220 West State Street, Hastings MI 49058
(269) 945-1292 or <http://www.barrycounty.org/>



September 1997
Revised December 1999
Revised August 2001
Revised April 2003
Revised July 2004
Revised March 2006
Revised May 2008

All dimensions are from tax roll unless noted below.
D = deeded M or S = surveyed
SR = Surveyor's Record prior to 1915
GLO = Government Land Office circa. 1830



25 30
36 31

36 31

08-11-036-003-00 has repeated courses between first course and course to point of beginning.