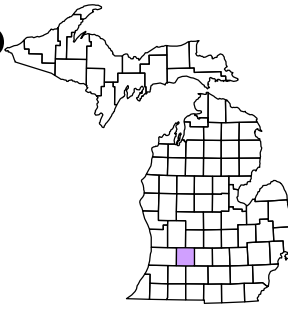


Rutland Charter Township  
T 3 N R 9 W  
Barry County  
Michigan

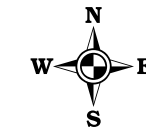
- Address 1234
- Gap
  - Overlap
  - Real Property
  - Personal Property
  - Approved Split
  - Plat
  - Condominium
  - Mobile Home Park



6	5	4	3	2	1
7	6	5	4	3	2
8	7	6	5	4	3
9	8	7	6	5	4
10	9	8	7	6	5
11	10	9	8	7	6
12	11	10	9	8	7
13	12	11	10	9	8
14	13	12	11	10	9
15	14	13	12	11	10
16	15	14	13	12	11
17	16	15	14	13	12
18	17	16	15	14	13
19	18	17	16	15	14
20	19	18	17	16	15
21	20	19	18	17	16
22	21	20	19	18	17
23	22	21	20	19	18
24	23	22	21	20	19
25	24	23	22	21	20
26	25	24	23	22	21
27	26	25	24	23	22
28	27	26	25	24	23
29	28	27	26	25	24
30	29	28	27	26	25
31	30	29	28	27	26
32	31	30	29	28	27
33	32	31	30	29	28
34	33	32	31	30	29
35	34	33	32	31	30
36	35	34	33	32	31

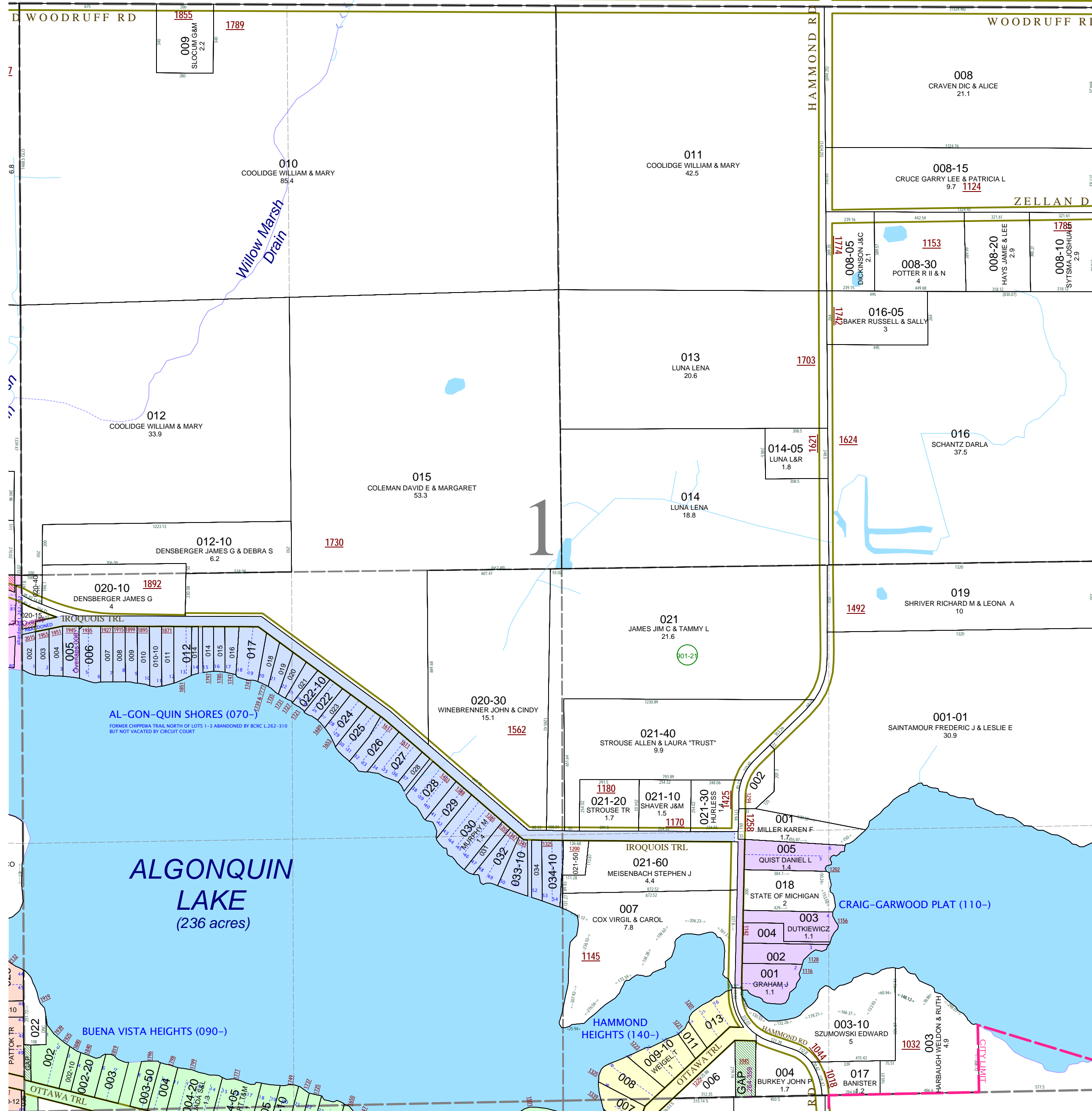
Section 1  
08-13-001-  
Scale 1"= 400'

This tax map was compiled for tax administration purposes from county and township records. It does not represent a land survey.  
Barry County Land Information Services  
220 West State Street, Hastings MI 49058  
(269) 945-1292 or http://www.barrycounty.org/



February 1997  
Revised October 1998  
Revised August 2000  
Revised October 2002  
Revised February 2004  
Revised January 2005  
Revised May 2006  
Revised November 2007

All dimensions are from tax roll unless noted below.  
D = deeded M or S = surveyed  
SR = Surveyor's Record prior to 1915  
GLO = Government Land Office circa. 1830



08-13-001-020-15 note for your files: 020-15 includes a piece of platted Chippewa Trail, which on deeds says that it has been vacated. Chippewa Trail has NOT been vacated. In L.262-310 & 262-312 the Barry County Road Commission "abandons" this road which makes the road private. In L.285-443 Circuit Court dedicated the new Iroquois Trail to the public but did not vacate the old Iroquois Trail. For the road to become privately owned the parcel MUST be vacated out of Circuit Court and the abandonment by BCRC just removes a public responsibility for maintenance from the road, reverting the road to private maintenance and does NOT convey title. Also, if the road was vacated the vacated road automatically attaches itself to the adjacent lots of the plat not to unplatted property unless there is a second court order.

08-13-070-005-00 overlaps 006-00. See R#1044182.

GAP below 022-00 owned by Oscar A. & Ruth M. Rice on a deed from Paul & Gladys Ward in L.342-383 and not sold onto Graham in L.369-271.

GAP owned by Floyd G. (deceased) & Phyllis A. Craig (327 E State St, Hastings) in L.264-359. They received this parcel in swap for a parcel to Hammond on the corner of Ottawa & Hammond (now lot 16 Hammond Heights & part of the road right of way). This parcel was not conveyed onto Burkey (004), but please note that the Burkey house sits on this property.