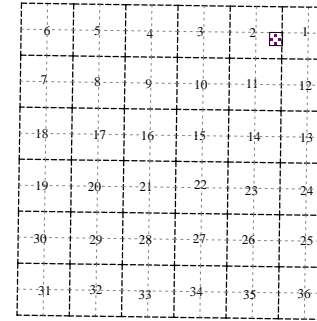


Rutland Charter Township
T 3 N R 9 W
Barry County
Michigan

- Address 1234
- Gap
- Overlap
- Real Property
- Personal Property
- Approved Split
- Plat
- Condominium
- Mobile Home Park



NE 1/4 SE 1/4 Section 2

08-13-002-

Scale 1"= 100'



May 2009

This tax map was compiled for tax administration purposes from county and township records. It does not represent a land survey.

All dimensions are from tax roll unless noted below.
D = deeded M or S = surveyed
SR = Surveyor's Record prior to 1915
GLO = Government Land Office circa. 1830

GAP north of 08-13-050-068-00 owned by Vern & Lucille Yarger in L.269-187 and not conveyed on.

08-13-050-066-00 needs to include gap parcel to its north.

08-13-050-070-00 claims Chippewa Trail which has not been vacated by Circuit Court.

08-13-050-071-00 claims Chippewa Trail and Opitchi St which have not been vacated by Circuit Court.

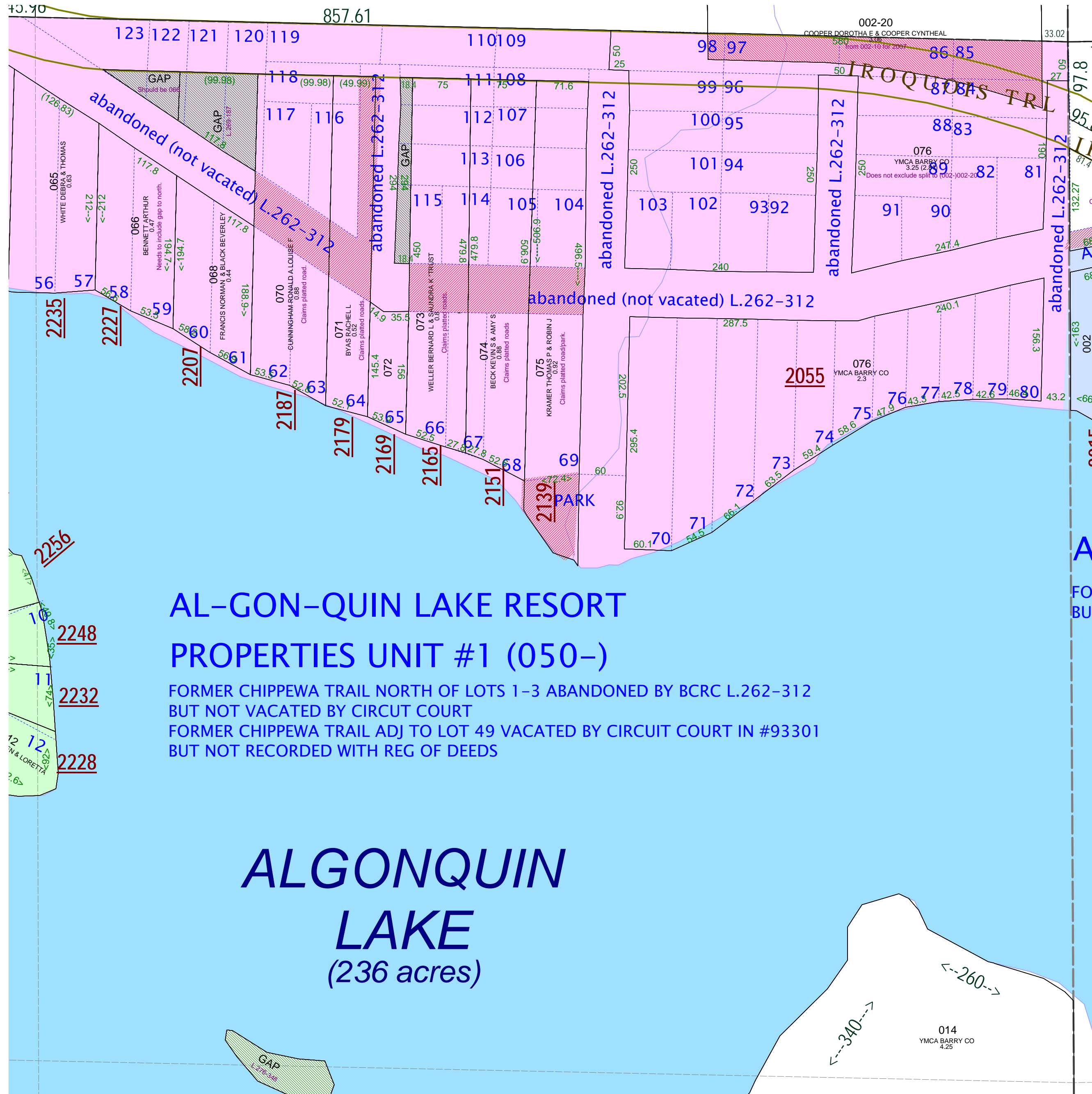
08-13-050-072-00 needs to include back lot as per L.634-602

08-13-050-073-00 claims Chippewa Trail which has not been vacated by Circuit Court.

08-13-050-074-00 claims Chippewa Trail which has not been vacated by Circuit Court.

08-13-050-075-00 claims Chippewa Trail & park which have not been vacated by Circuit Court.

08-13-050-076-00 needs to exclude parcel given to 08-13-002-002-20 on a quit claim deed in R#1173786.



08-13-002-GAP which is the small island owned by Manson & Melbourne Couch in L.276-348, not given to the YMCA camp with the large island.