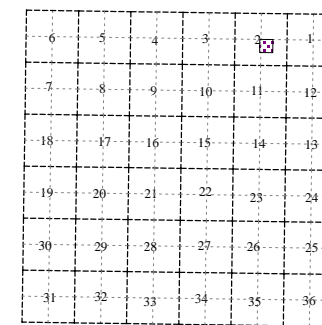


Rutland Charter Township  
T 3 N R 9 W  
Barry County  
Michigan

- Address 1234
- Gap
- Overlap
- Real Property
- Personal Property
- Approved Split
- Plat
- Condominium
- Mobile Home Park



NW 1/4 SE 1/4 Section 2

08-13-002-

Scale 1"= 100'

May 2009



This tax map was compiled for tax administration purposes from county and township records. It does not represent a land survey. Barry County Land Information Services 220 West State Street, Hastings MI 49058 (269) 945-1292 or <http://www.barrycounty.org/>

All dimensions are from tax roll unless noted below.  
D = deeded M or S = surveyed  
SR = Surveyor's Record prior to 1915  
GLO = Government Land Office circa. 1830

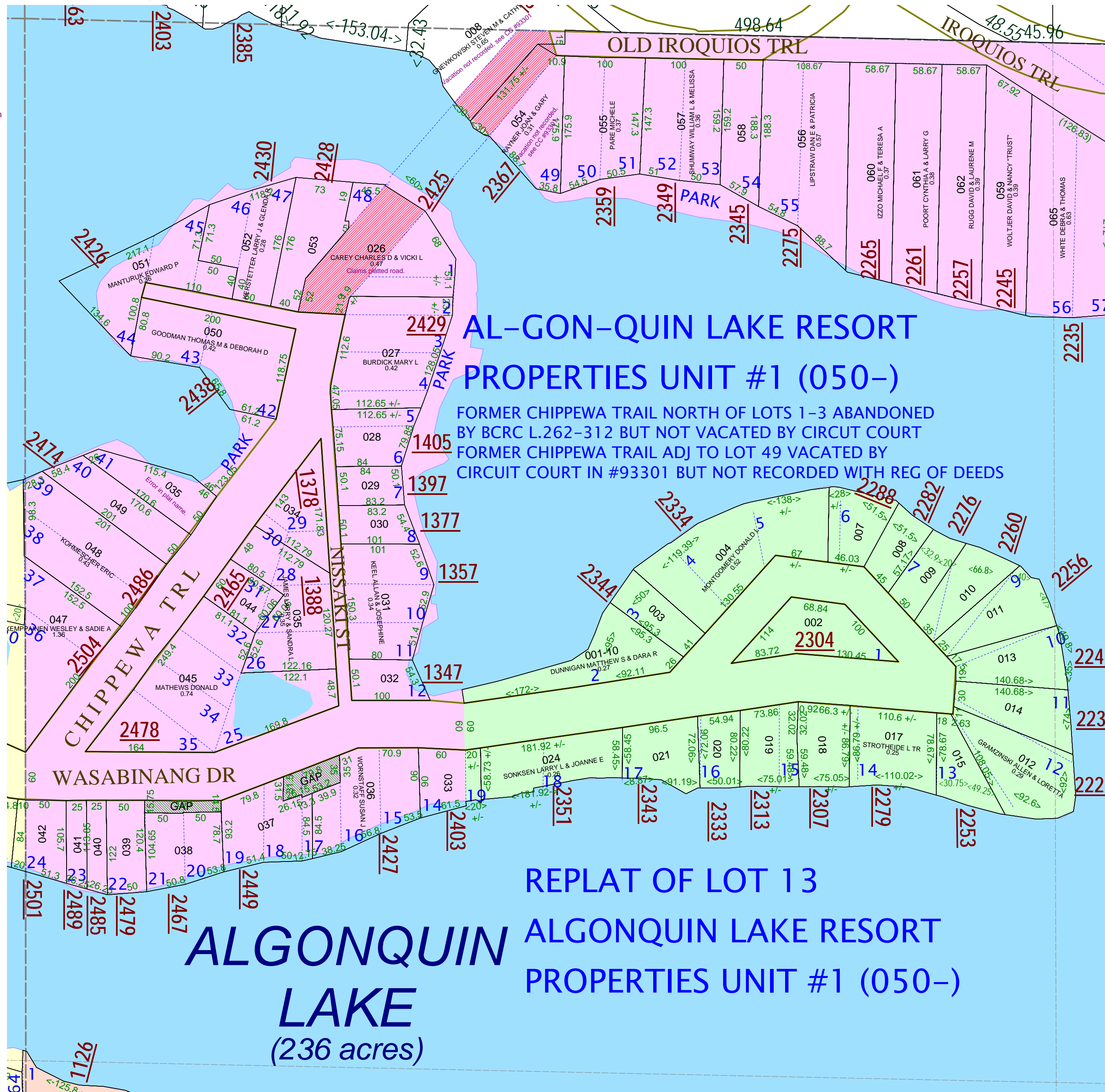
08-13-002-008-00 includes a piece of platted Chippewa Trail. It has been vacated in Circuit Court order #93301, but this hasn't been recorded with the register of deeds.

08-13-000-054-00 has Chippewa Trail claimed on the tax description. It has been vacated in Circuit Court in file #93301, but that is not recorded with the register of deeds.

08-13-050-026-00 claims Chippewa Trail which has not been vacated.

08-13-050-035-00 the plat name is switched around and should be written as "AL-GON-QUIN LAKE RESORT PROPERTIES UNIT #1"

GAPS in lots 17, 18, 20 & 21 were never deeded out by Algonquin Lake Resort Properties.



**AL-GON-QUIN LAKE RESORT PROPERTIES UNIT #1 (050-)**  
FORMER CHIPPEWA TRAIL NORTH OF LOTS 1-3 ABANDONED BY BCRC L.262-312 BUT NOT VACATED BY CIRCUIT COURT  
FORMER CHIPPEWA TRAIL ADJ TO LOT 49 VACATED BY CIRCUIT COURT IN #93301 BUT NOT RECORDED WITH REG OF DEEDS

**REPLAT OF LOT 13 ALGONQUIN LAKE RESORT PROPERTIES UNIT #1 (050-)**

**ALGONQUIN LAKE (236 acres)**