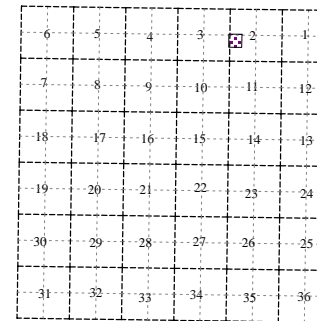
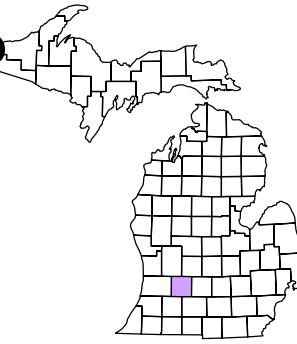


Rutland Charter Township
T 3 N R 9 W
Barry County
Michigan

- Address 1234
- Gap
- Overlap
- Real Property
- Personal Property
- Approved Split
- Plat
- Condominium
- Mobile Home Park



NW 1/4 SW 1/4 Section 2

08-13-002-

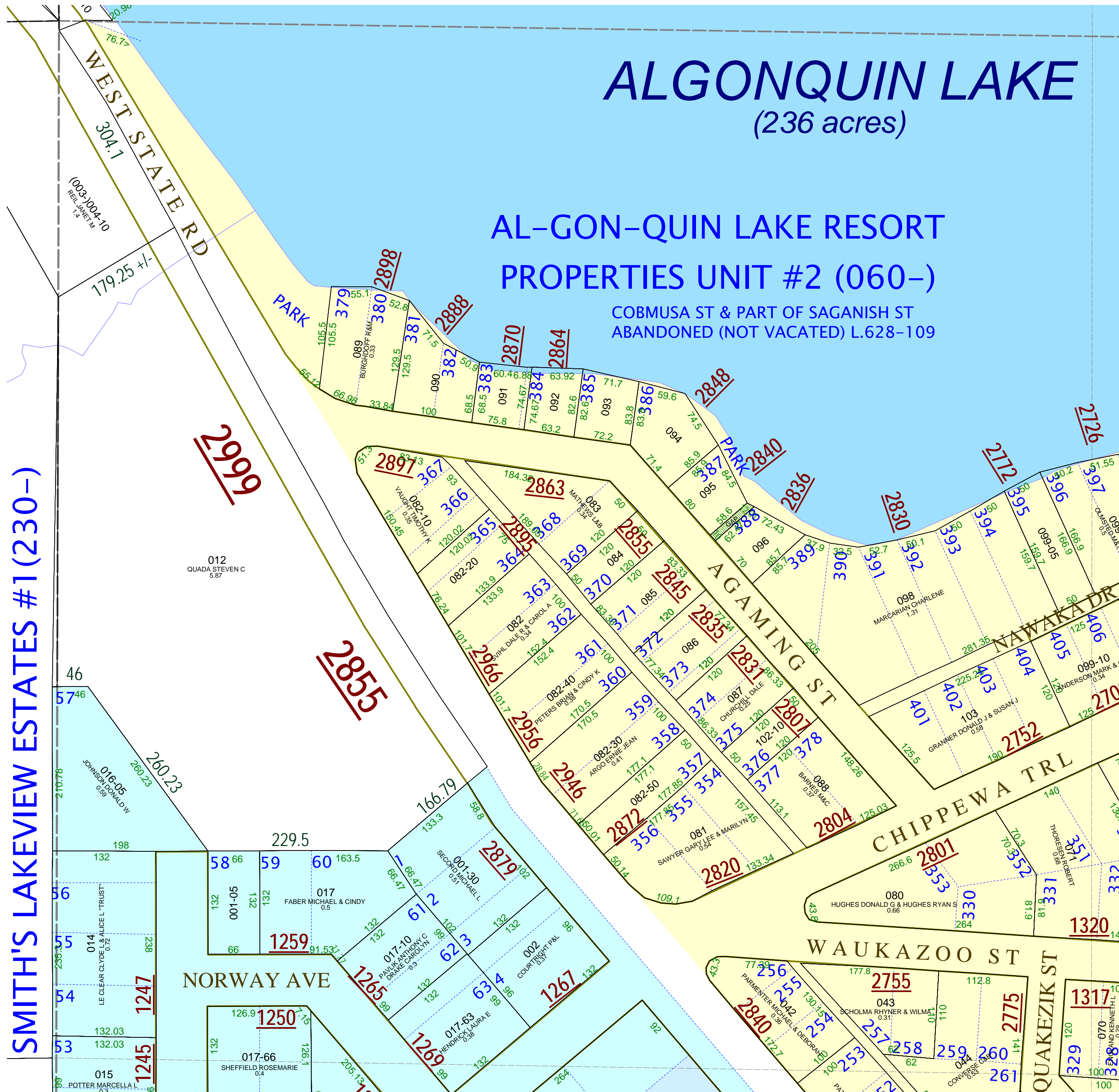
Scale 1"= 100'

This tax map was compiled for tax administration purposes from county and township records. It does not represent a land survey. Barry County Land Information Services 220 West State Street, Hastings MI 49058 (269) 945-1292 or <http://www.barrycounty.org/>

May 2009



All dimensions are from tax roll unless noted below.
D = deeded M or S = surveyed
SR = Surveyor's Record prior to 1915
GLO = Government Land Office circa. 1830



GAP in west part of lot 388 owned in L 262-155 by Theodore P. & Hazel M. (deceased 1975) Perg on a warranty deed from Leo W. & Kathryn S. Gould recorded on 08/12/1958.