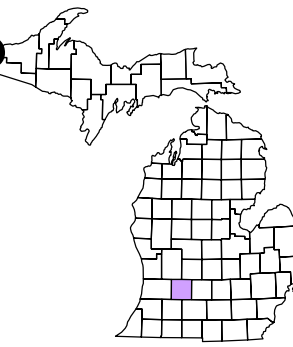


Rutland Charter Township  
 T 3 N R 9 W  
 Barry County  
 Michigan

- Address 1234
- Gap
- Overlap
- Real Property
- Personal Property
- Approved Split
- Plat
- Condominium
- Mobile Home Park



6	7	8	9	10	11	12
13	14	15	16	17	18	19
20	21	22	23	24	25	26
27	28	29	30	31	32	33
34	35	36	37	38	39	40

SE 1/4 NW 1/4 Section 2

08-13-002-

Scale 1" = 100'

This tax map was compiled for tax administration purposes from county and township records. It does not represent a land survey. Barry County Land Information Services 220 West State Street, Hastings MI 49058 (269) 945-1292 or <http://www.barrycounty.org/>



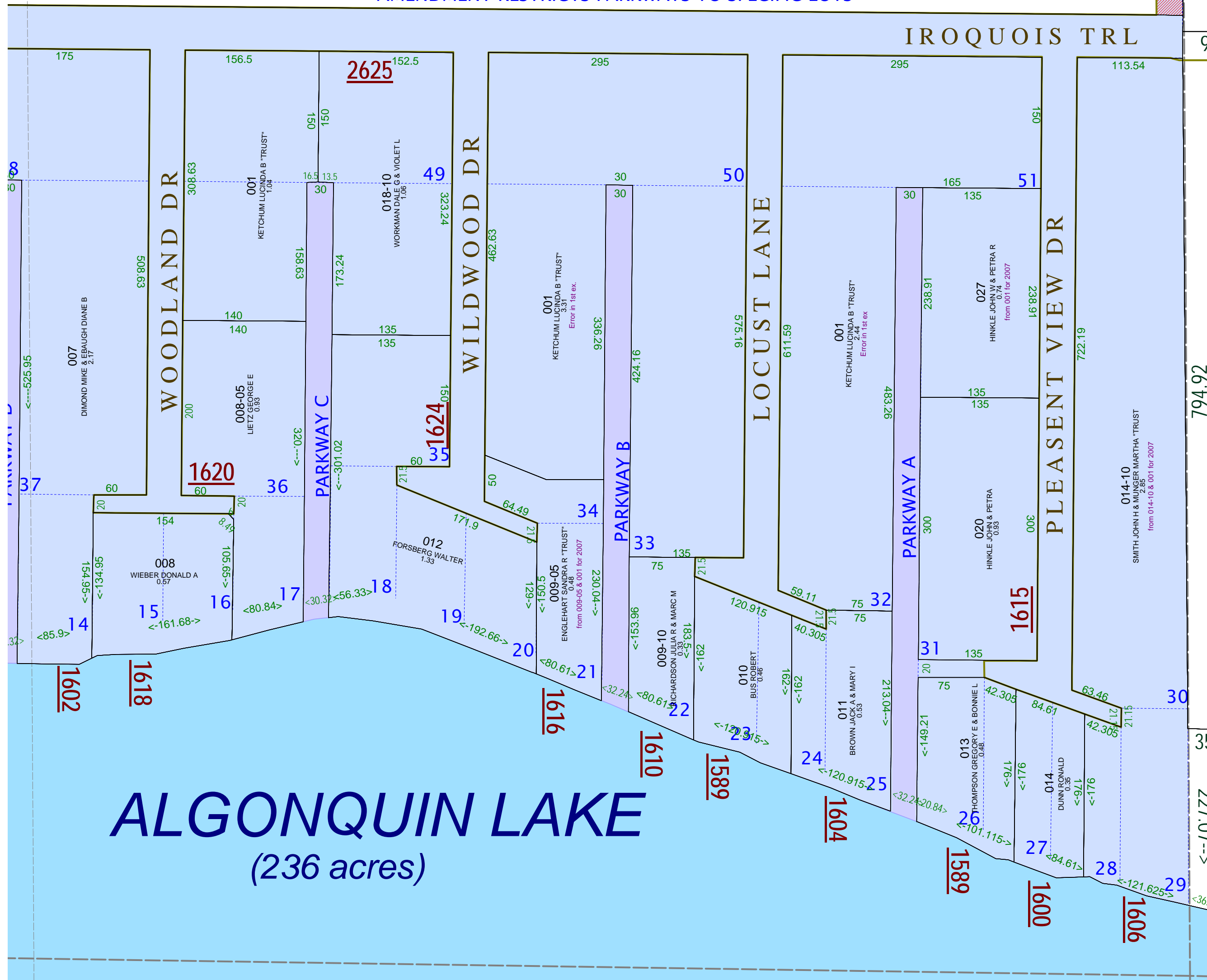
May 2009

All dimensions are from tax roll unless noted below.  
 D = deeded M or S = surveyed  
 SR = Surveyor's Record prior to 1915  
 GLO = Government Land Office circa. 1830

009  
 SAND CREEK DAIRY LLC  
 99.06  
 Overlaps platted road.

# ALGONQUIN NORTH SHORE (080-) & AMENDED PLAT OF ALGONQUIN NORTH SHORE

AMENDMENT RESTRICTS PARKWAYS TO SPECIFIC LOTS



(429)

08-13-002-009-00 needs to exclude platted Buehler Rd which was specifically excluded from the deed from Rabbers to Ketchum in L.192-226.

08-13-080-001-00 has an error in the description because first exclusion should only apply to lot 40.

ALGONQUIN LAKE  
 (236 acres)