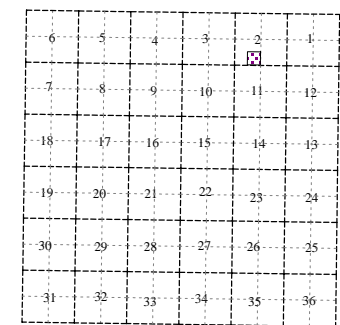


Rutland Charter Township
T 3 N R 9 W
Barry County
Michigan

- Address 1234
- Gap
- Overlap
- Real Property
- Personal Property
- Approved Split
- Plat
- Condominium
- Mobile Home Park



SE 1/4 SW 1/4 Section 2

08-13-002-

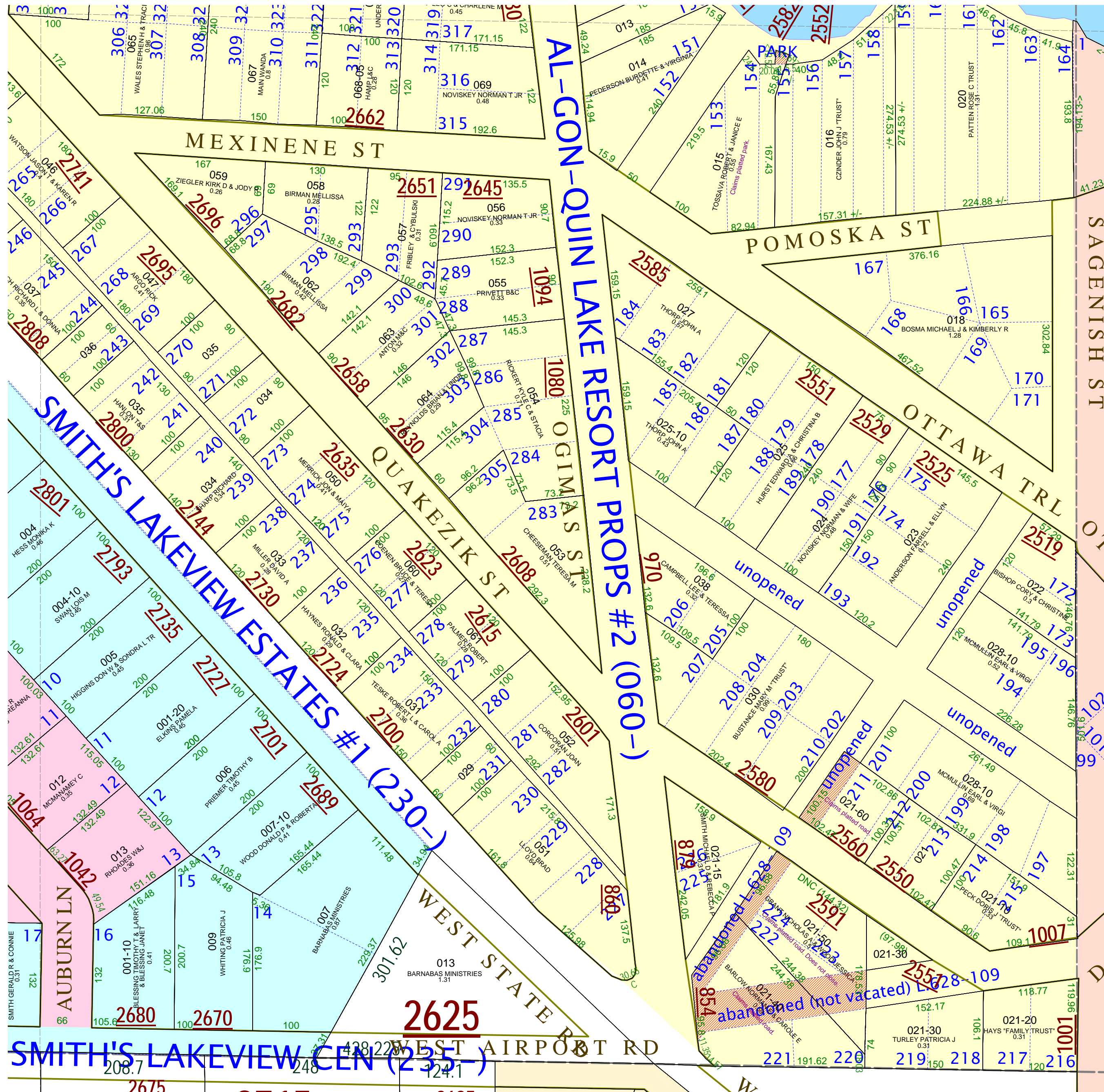
Scale 1"= 100'

May 2009



This tax map was compiled for tax administration purposes from county and township records. It does not represent a land survey.
Barry County Land Information Services
220 West State Street, Hastings MI 49058
(269) 945-1292 or <http://www.barrycounty.org/>

All dimensions are from tax roll unless noted below.
D = deduced M or S = surveyed
SR = Surveyor's Record prior to 1915
GLO = Government Land Office circa. 1830



08-13-060-015-00 claims part of shared park which has not been vacated.

08-13-060-021-60 claims road which has not been vacated nor even abandoned.

08-13-060-021-50 does not close and claims road which has not been vacated.

08-13-060-021-40 claims a road which has not been vacated.