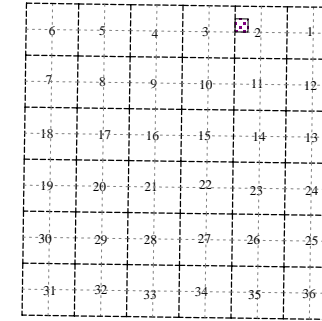


Rutland Charter Township  
T 3 N R 9 W  
Barry County  
Michigan

- Address 1234
- Gap
- Overlap
- Real Property
- Personal Property
- Approved Split
- Plat
- Condominium
- Mobile Home Park



SW 1/4 NW 1/4 Section 2

08-13-002-

Scale 1"= 100'

June 2009

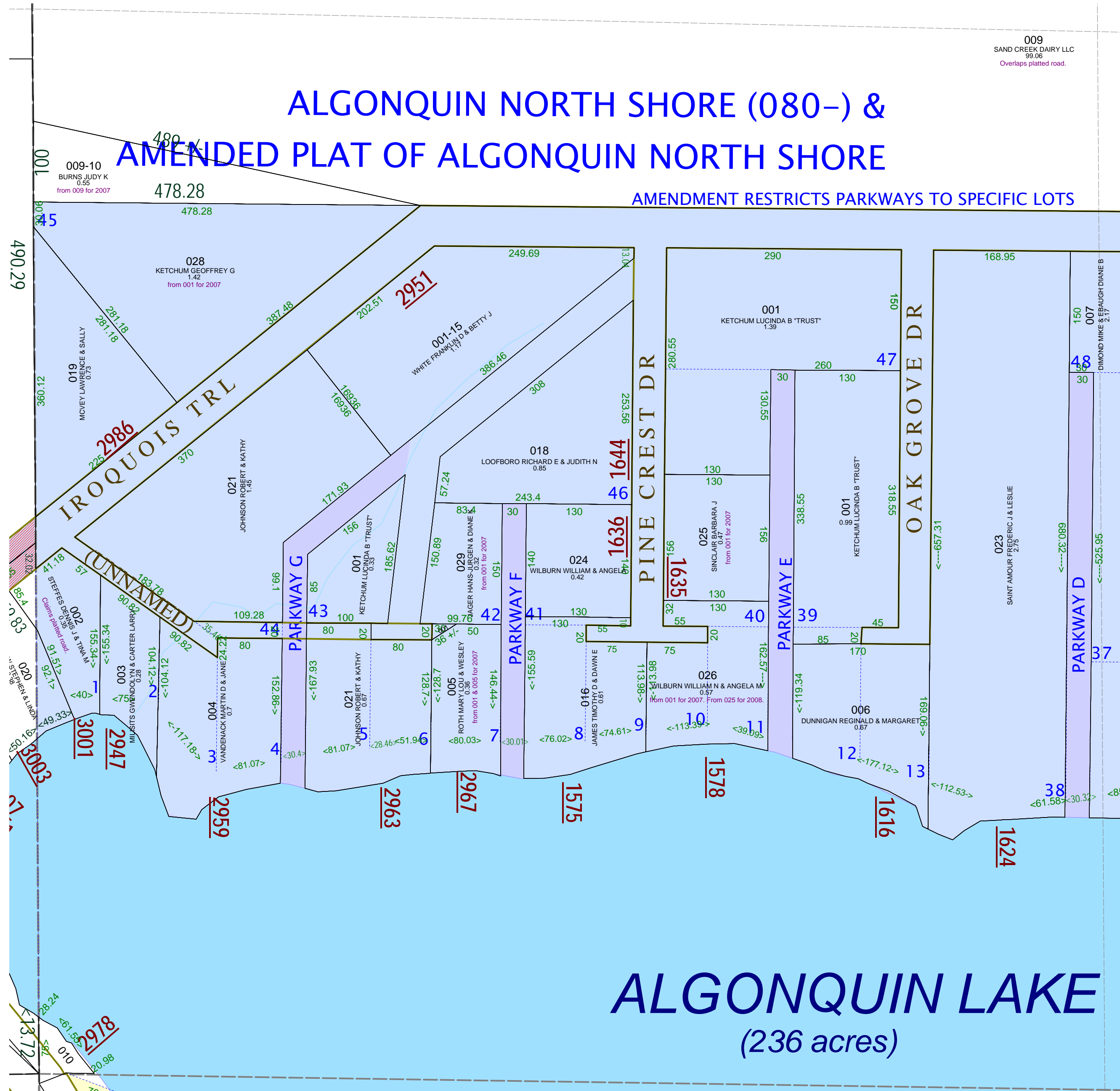


This tax map was compiled for tax administration purposes from county and township records. It does not represent a land survey.  
Barry County Land Information Services  
220 West State Street, Hastings MI 49058  
(269) 945-1292 or <http://www.barrycounty.org/>

All dimensions are from tax roll unless noted below.  
D = deeded M or S = surveyed  
SR = Surveyor's Record prior to 1915  
GLO = Government Land Office circa. 1830

# ALGONQUIN NORTH SHORE (080-) & AMENDED PLAT OF ALGONQUIN NORTH SHORE

AMENDMENT RESTRICTS PARKWAYS TO SPECIFIC LOTS



08-13-080-002-00 claims platted Iroquois Trail which is still a county road and has not been vacated.

08-13-002-009-00 needs to exclude platted Buehler Rd which was specifically excluded from the deed from Rabbers to Ketchum in L.192-226.

08-13-080-001-00 has an error in the description because first exclusion should only apply to lot 40.

## ALGONQUIN LAKE (236 acres)