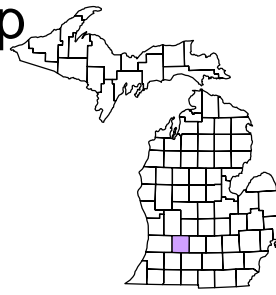
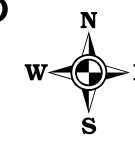


Rutland Charter Township
T 3 N R 9 W
Barry County
Michigan

- Address 1234
- Gap
- Overlap
- Real Property
- Personal Property
- Approved Split
- Plat
- Condominium
- Mobile Home Park



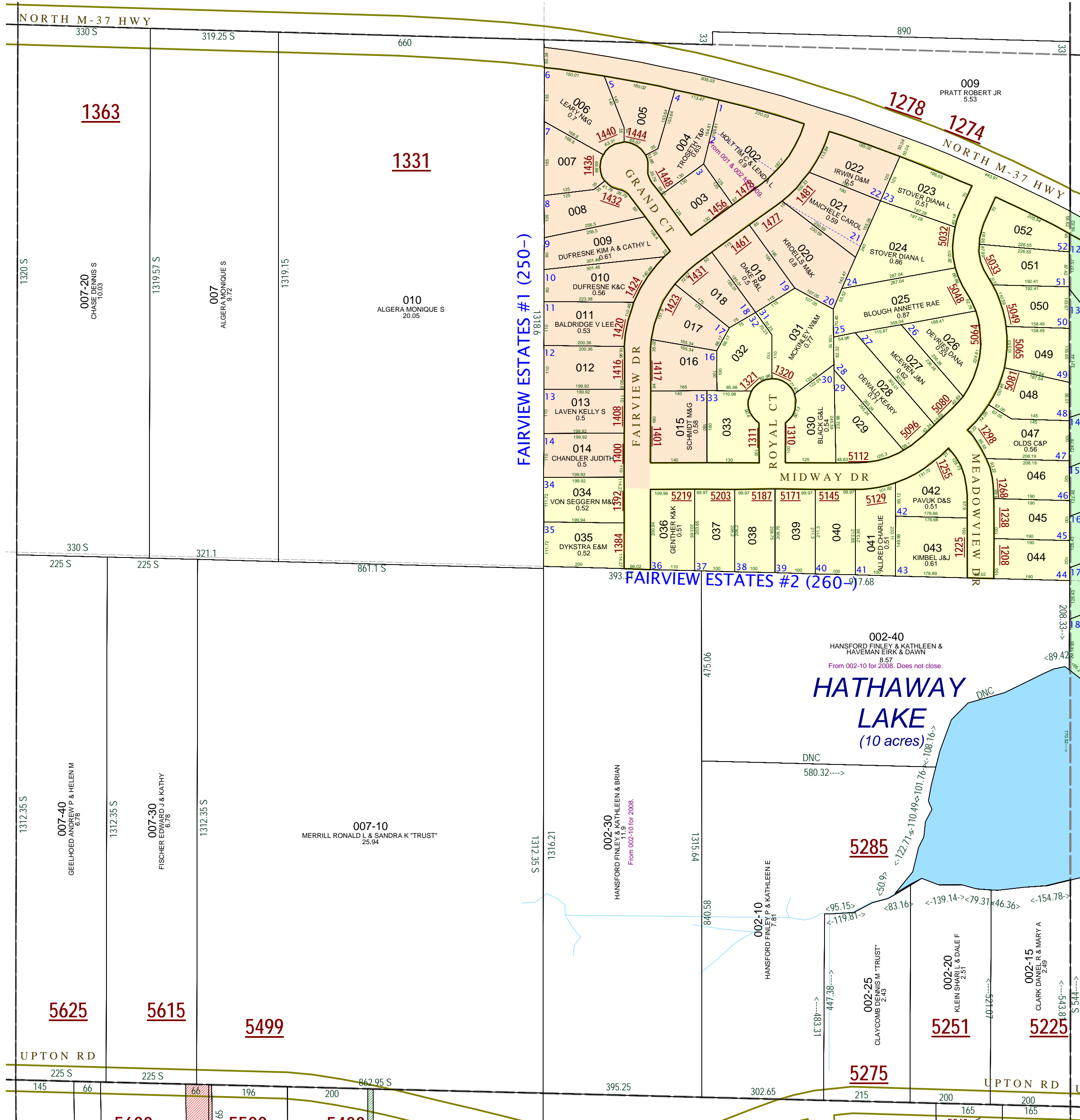
SE 1/4 Section 5
08-13-005-
Scale 1" = 200'



August 2000
Revised January 2005
Revised May 2006
Revised June 2009

This tax map was compiled for tax administration purposes from county and township records. It does not represent a land survey. Barry County Land Information Services 220 West State Street, Hastings MI 49058 (269) 945-1292 or <http://www.barrycounty.org/>

All dimensions are from tax roll unless noted below.
D = deeded M or S = surveyed
SR = Surveyor's Record prior to 1915
GLO = Government Land Office circa. 1830



08-13-005-002-40 does not close in last course. See deed in #200711010003750.