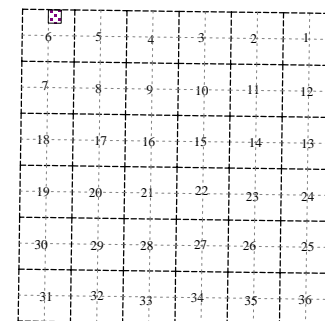
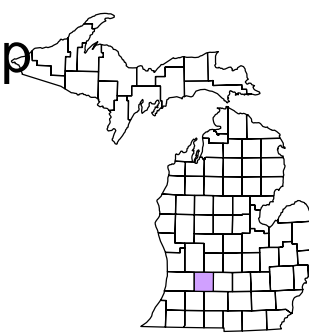


Rutland Charter Township
T 3 N R 9 W
Barry County
Michigan

- Address 1234
- Gap
- Overlap
- Real Property
- Personal Property
- Approved Split
- Plat
- Condominium
- Mobile Home Park



NW 1/4 NE 1/4 Section 6
08-13-006-
Scale 1"= 100'

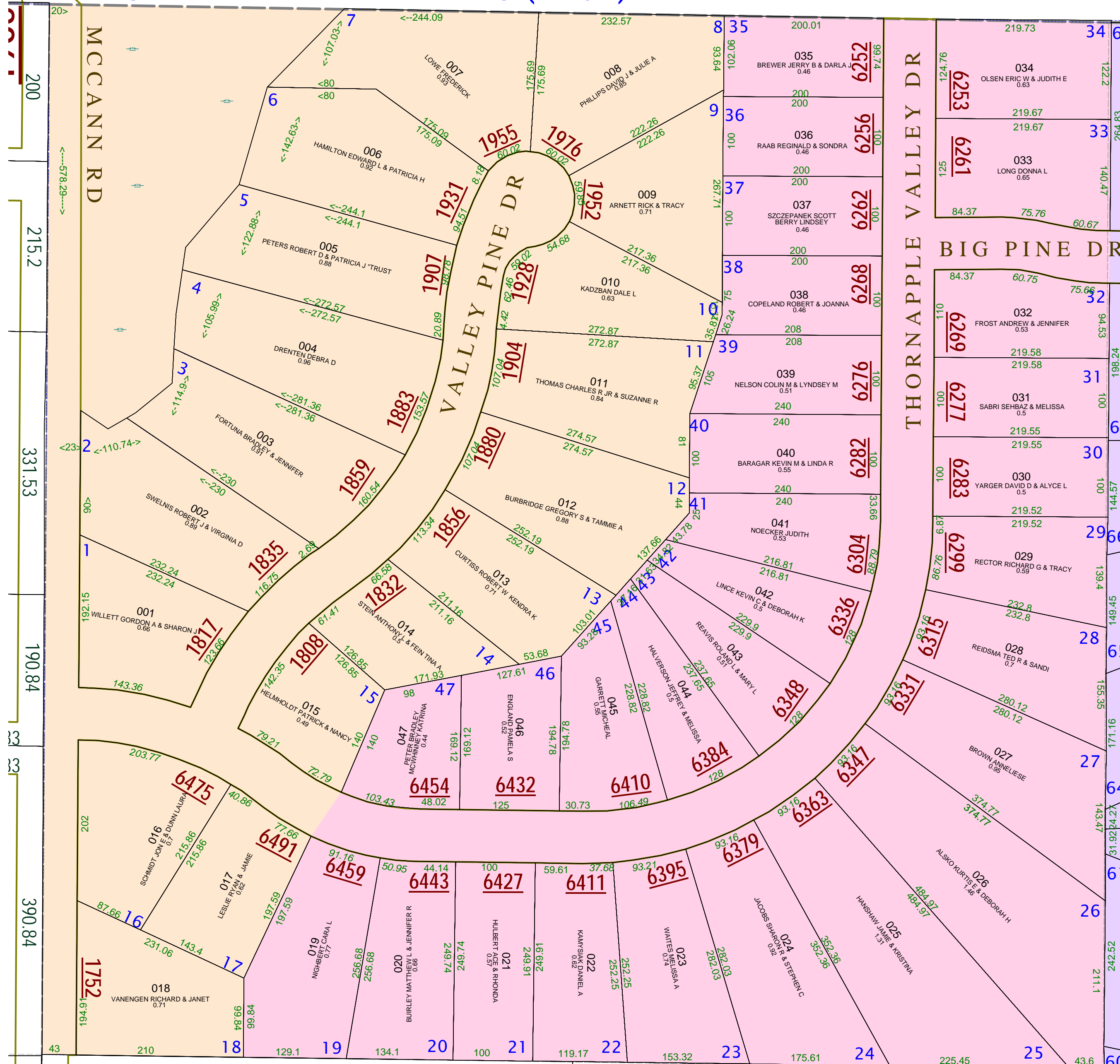
June 2009



All dimensions are from tax roll unless noted below.
D = deeded M or S = surveyed
SR = Surveyor's Record prior to 1915
GLO = Government Land Office circa. 1830

This tax map was compiled for tax administration purposes from county and township records. It does not represent a land survey.
Barry County Land Information Services
220 West State Street, Hastings MI 49058
(269) 945-1292 or <http://www.barrycounty.org/>

THORNAPPLE VALLEY PINES (270-)



THORNAPPLE VALLEY PINES #2 (275-)

666.7