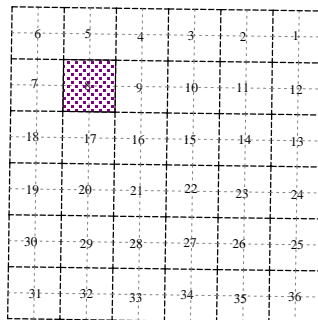
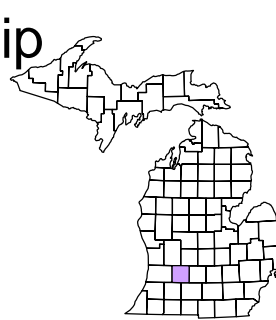


Rutland Charter Township  
T 3 N R 9 W  
Barry County  
Michigan

- Address 1234
- Gap
- Overlap
- Real Property
- Personal Property
- Approved Split
- Plat
- Condominium
- Mobile Home Park



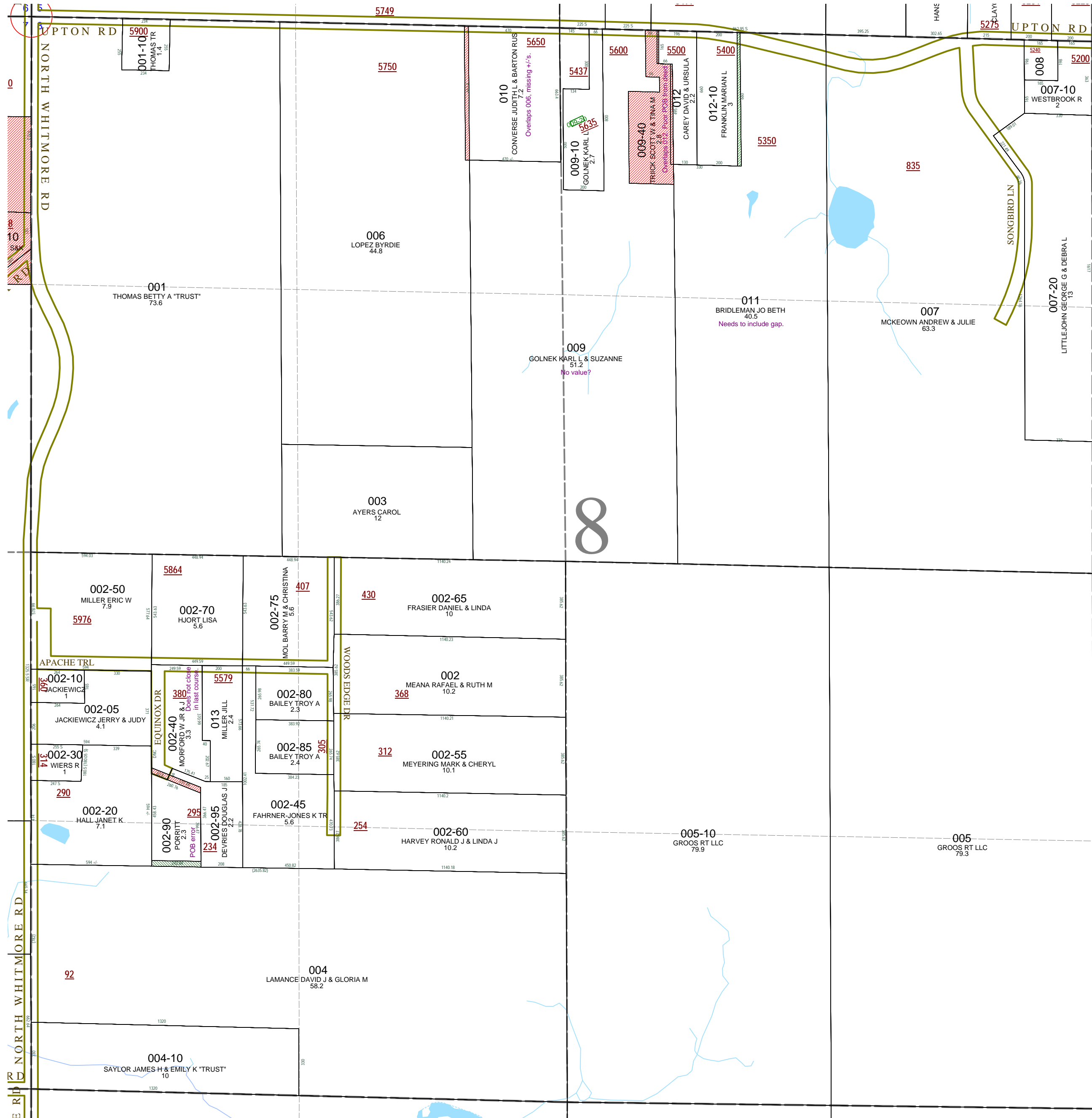
Section 8  
08-13-008-  
Scale 1" = 400'

This tax map was compiled for tax administration purposes from county and township records. It does not represent a land survey. Barry County Land Information Services 220 West State Street, Hastings MI 49058 (269) 945-1292 or <http://www.barrycounty.org/>



February 1997  
Revised October 1998  
Revised August 2000  
Revised October 2002  
Revised February 2004  
Revised January 2005  
Revised May 2006  
Revised November 2007  
Revised June 2009  
All dimensions are from tax roll unless noted below.  
D = deeded M or S = surveyed  
SR = Surveyor's Record prior to 1915  
GLO = Government Land Office circa. 1830

08-13-008-010-00 overlaps 006 because it is missing one important +/-.



08-13-008-009-40 overlaps 012-00. I have no copy of land division permit to understand what is going on here, but they seem to overlap by about 16 feet because it is assumed the section is perfect when in fact it is short. The property it overlaps has been surveyed.

08-13-008-011-00 needs to include gap parcel next to 012-10

08-13-008-009-00 does not exclude split out to 009-40 and what happened to its assessed value? It went to exempt class and \$0 assessment two years ago and I cannot find a reason in the record.

08-13-008-002-40 description does not close and it doesn't close on deed either.

08-13-008-002-90 has an error in the courses to point of beginning which is an error on the deeds too.