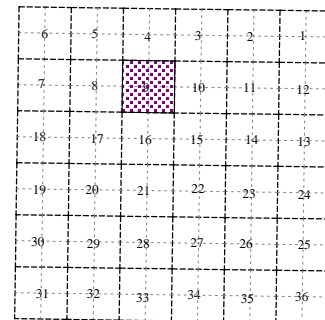
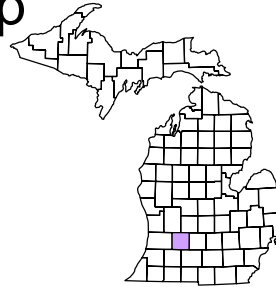


Rutland Charter Township  
T 3 N R 9 W  
Barry County  
Michigan

- Address 1234
- Gap
- Overlap
- Real Property
- Personal Property
- Approved Split
- Plat
- Condominium
- Mobile Home Park

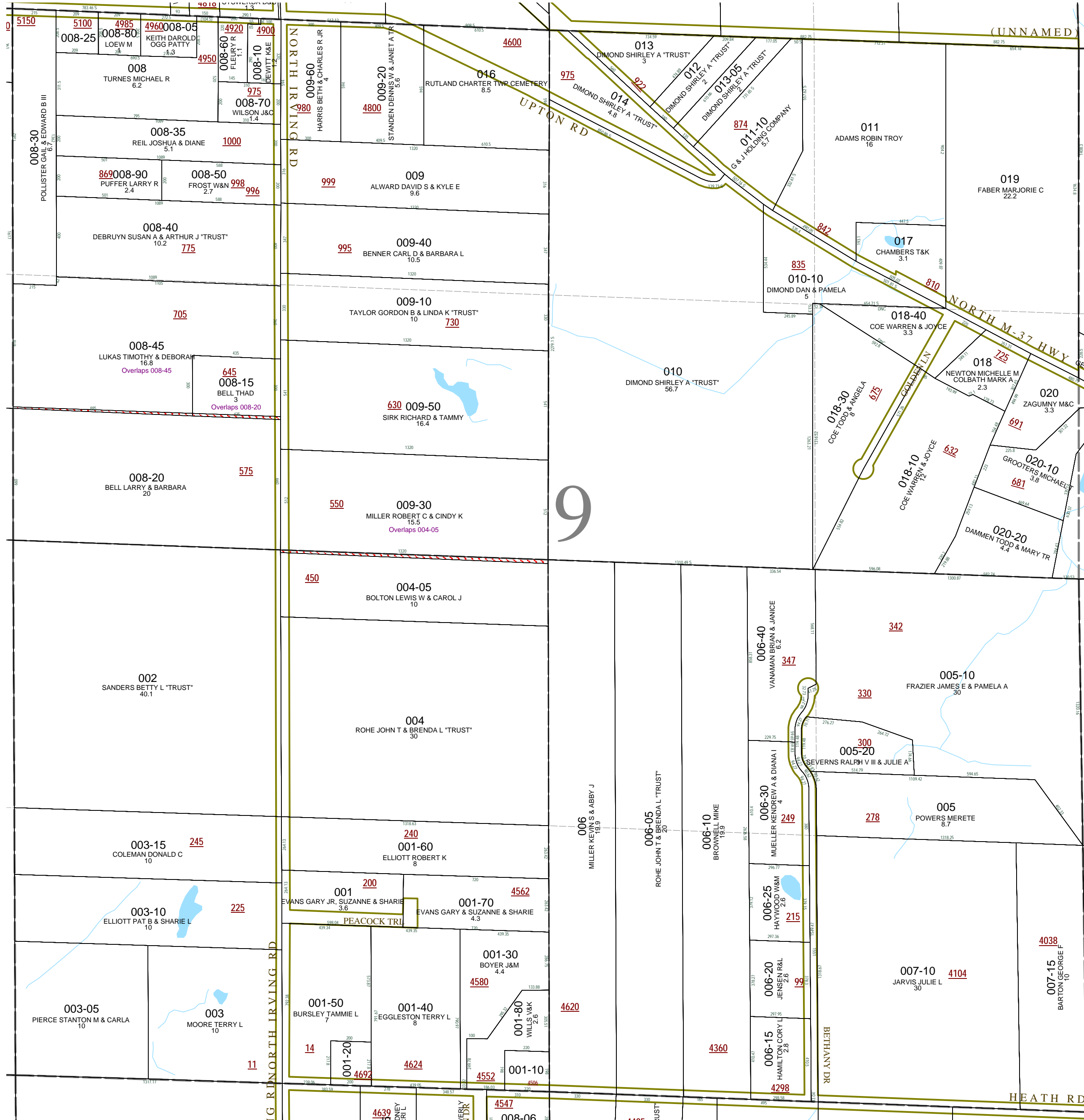


Section 9  
08-13-009-  
Scale 1" = 400'

This tax map was compiled for tax administration purposes from county and township records. It does not represent a land survey. Barry County Land Information Services 220 West State Street, Hastings MI 49058 (269) 945-1292 or <http://www.barrycounty.org/>



February 1997  
Revised October 1998  
Revised August 2000  
Revised October 2002  
Revised February 2004  
Revised January 2005  
Revised May 2006  
Revised November 2007  
Revised June 2009  
All dimensions are from tax roll unless noted below.  
D = deeded M or S = surveyed  
SR = Surveyor's Record prior to 1915  
GLO = Government Land Office circa. 1830



08-13-009-008-45 overlaps 008-20. The section is short and 008-20 was deeded out first.

08-13-009-008-15 overlaps 008-20. The section is short and 008-20 was deeded out first.

08-13-009-009-30 overlaps 004-05 by overshooting section line by about 19.2ft as surveyed by Excel Engineering in 1991. See L.452-375.

08-13-009-018-40 does not close.