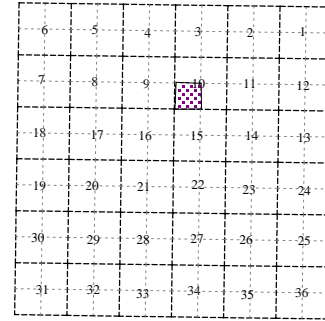
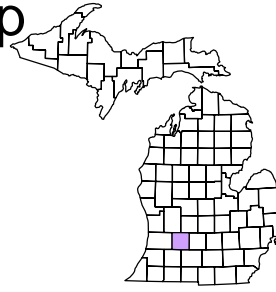


Rutland Charter Township
T 3 N R 9 W
Barry County
Michigan

- Address 1234
- Gap
- Overlap
- Real Property
- Personal Property
- Approved Split
- Plat
- Condominium
- Mobile Home Park



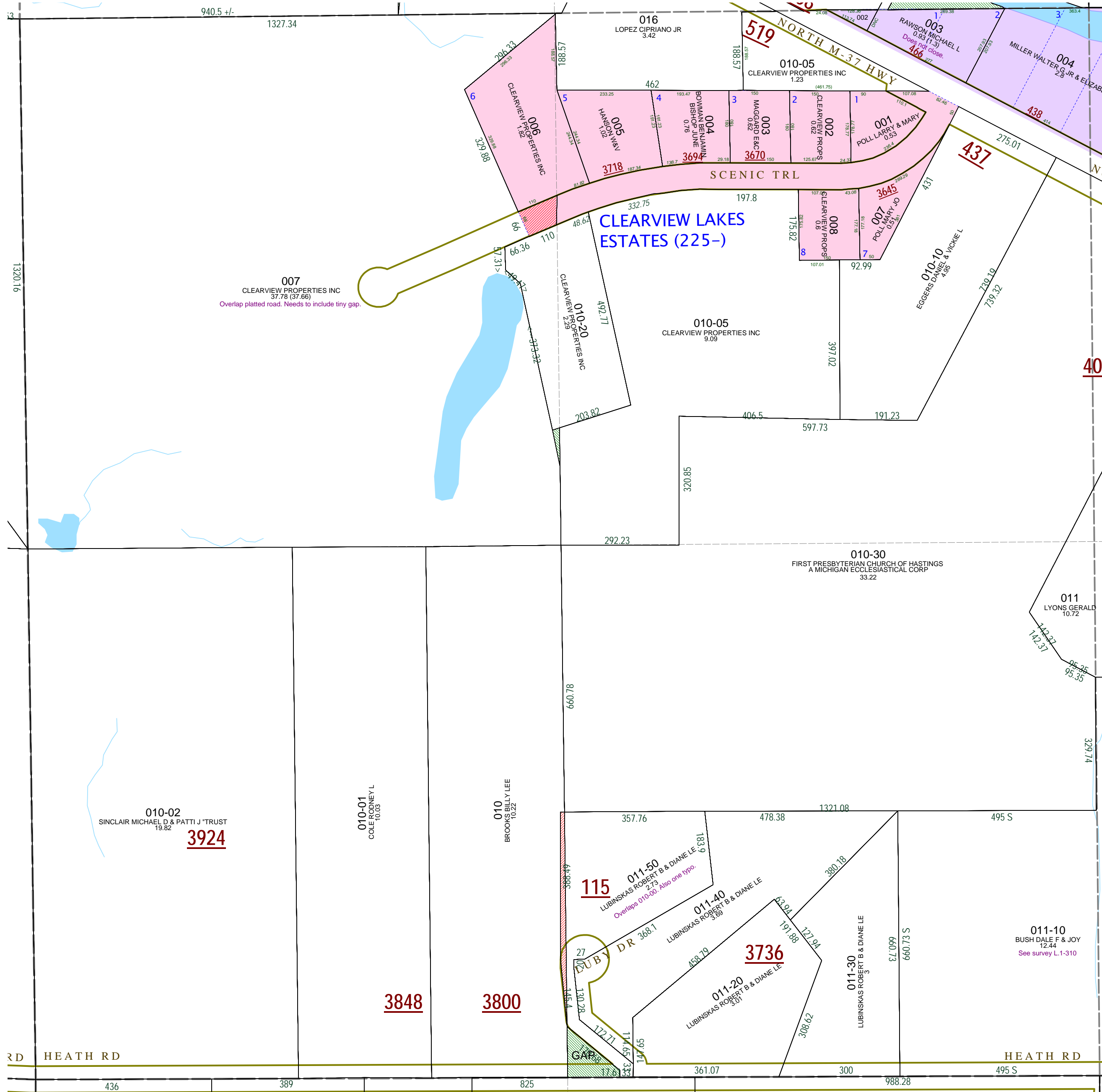
SW 1/4 Section 10
08-13-010-
Scale 1" = 200'



August 2000
Revised October 2002
Revised February 2004
Revised January 2005
Revised May 2006
Revised November 2007
Revised June 2009

This tax map was compiled for tax administration purposes from county and township records. It does not represent a land survey. Barry County Land Information Services 220 West State Street, Hastings MI 49058 (269) 945-1292 or <http://www.barrycounty.org/>

All dimensions are from tax roll unless noted below.
D = deeded M or S = surveyed
SR = Surveyor's Record prior to 1915
GLO = Government Land Office circa. 1830



08-13-010-007-00 overlaps platted road and should include tiny little gap parcel southerly of 010-20.

08-13-200-003-00 does not close and needs to include gap parcel to its north as deeded in R#1126589.

08-13-010-011-50 overlaps 010-00 (but I don't have a copy of township's split permit survey to figure out why). Was overlapped area supposed to be deeded from Brooks in exchange for the gap property? It also has one small typo

GAP southwest of Lubinskas splits. Was this supposed to be deeded over to Brooks as part of an exchange on the overlapping property?