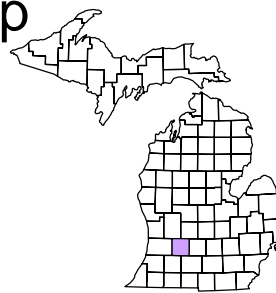
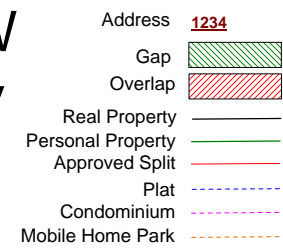


Rutland Charter Township  
T 3 N R 9 W  
Barry County  
Michigan



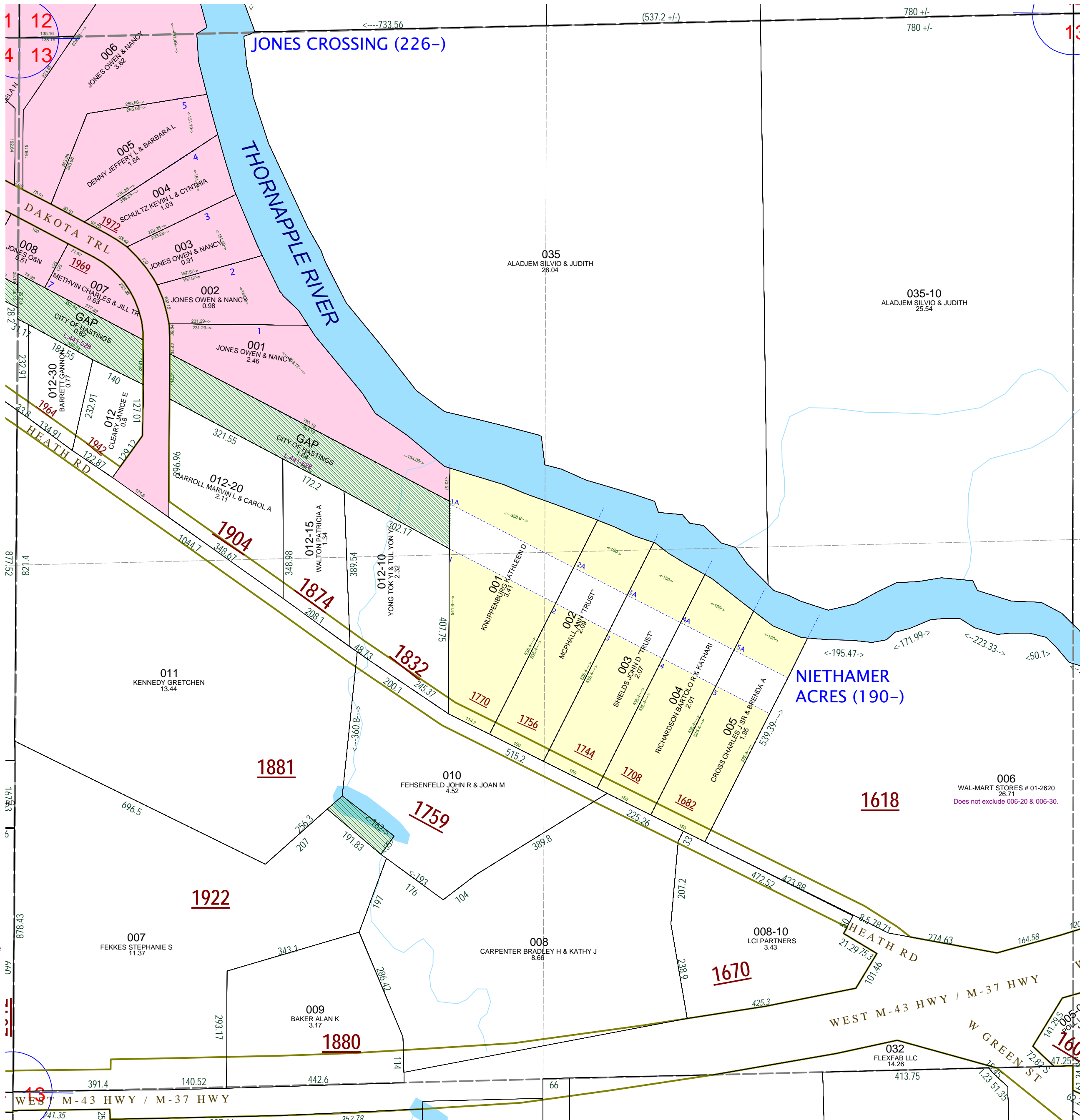
NW 1/4 Section 13  
08-13-013-  
Scale 1" = 200'



August 2000  
Revised October 2002  
Revised February 2004  
Revised January 2005  
Revised May 2006  
Revised November 2007  
Revised June 2009

This tax map was compiled for tax administration purposes from county and township records. It does not represent a land survey. Barry County Land Information Services 220 West State Street, Hastings MI 49058 (269) 945-1292 or <http://www.barrycounty.org/>

All dimensions are from tax roll unless noted below.  
D = deeded M or S = surveyed  
SR = Surveyor's Record prior to 1915  
GLO = Government Land Office circa. 1830



GAPs owned by City of Hastings in L.441-528.

08-13-013-008-00 should not have a bearing on that last course if it was supposed to follow curve of the road right of way. That bearing is from 008-10 and without a copy of the survey we don't know what the chord, bearing or distance may be.

08-13-013-006-00 does not exclude splits out to 006-20 & 006-30.

006  
WAL-MART STORES # 01-2620  
26.71  
Does not exclude 006-20 & 006-30.