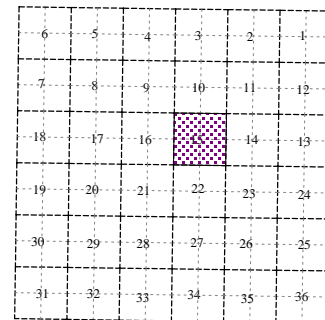
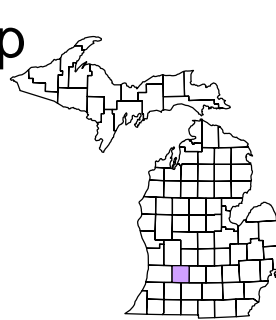


Rutland Charter Township
T 3 N R 9 W
Barry County
Michigan

- Address 1234
- Gap
- Overlap
- Real Property
- Personal Property
- Approved Split
- Plat
- Condominium
- Mobile Home Park

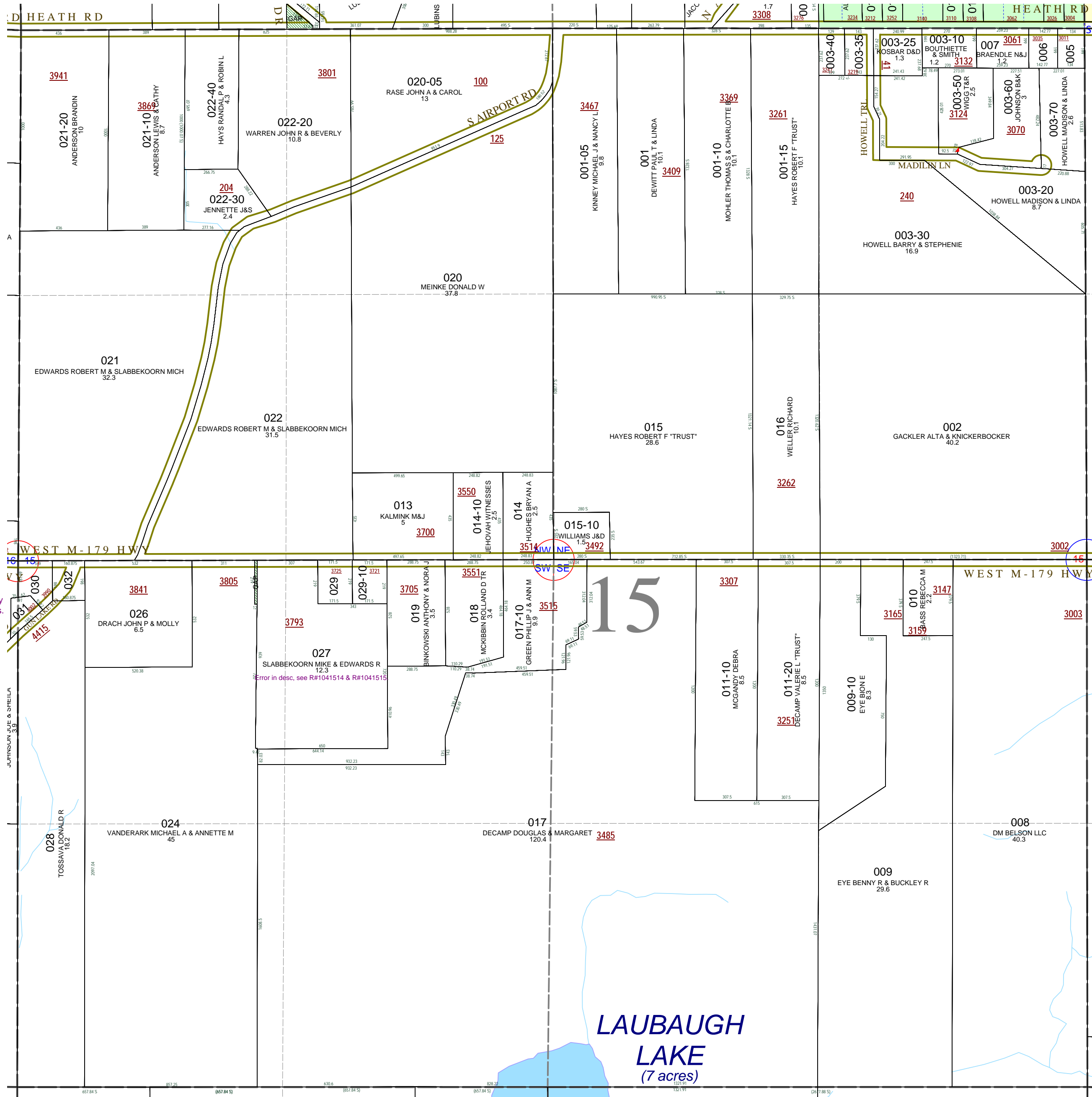


Section 15
08-13-015-
Scale 1" = 400'

This tax map was compiled for tax administration purposes from county and township records. It does not represent a land survey. Barry County Land Information Services 220 West State Street, Hastings MI 49058 (269) 945-1292 or <http://www.barrycounty.org/>



February 1997
Revised October 1998
Revised August 2000
Revised October 2002
Revised February 2004
Revised January 2005
Revised May 2006
Revised November 2007
Revised June 2009
All dimensions are from tax roll unless noted below.
D = deeded M or S = surveyed
SR = Surveyor's Record prior to 1915
GLO = Government Land Office circa. 1830



GAP owned by Albert & Eva Stauffer (both deceased) in L.370-150 and not deeded to Robert Edwards in R#1039456. It looks like they overlooked this parcel in the estate proceedings.

08-13-015-027-00 needs to exclude parcels deeded to Decamp in R#1041514 and R#1041515.

15

LAUBAUGH LAKE
(7 acres)