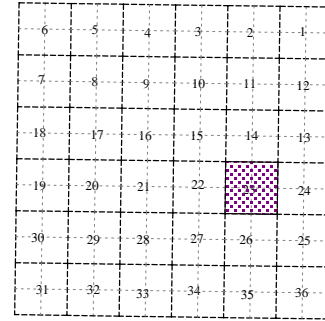
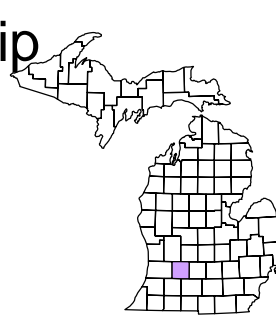


Rutland Charter Township
T 3 N R 9 W
Barry County
Michigan

- Address 1234
- Gap
- Overlap
- Real Property
- Personal Property
- Approved Split
- Plat
- Condominium
- Mobile Home Park

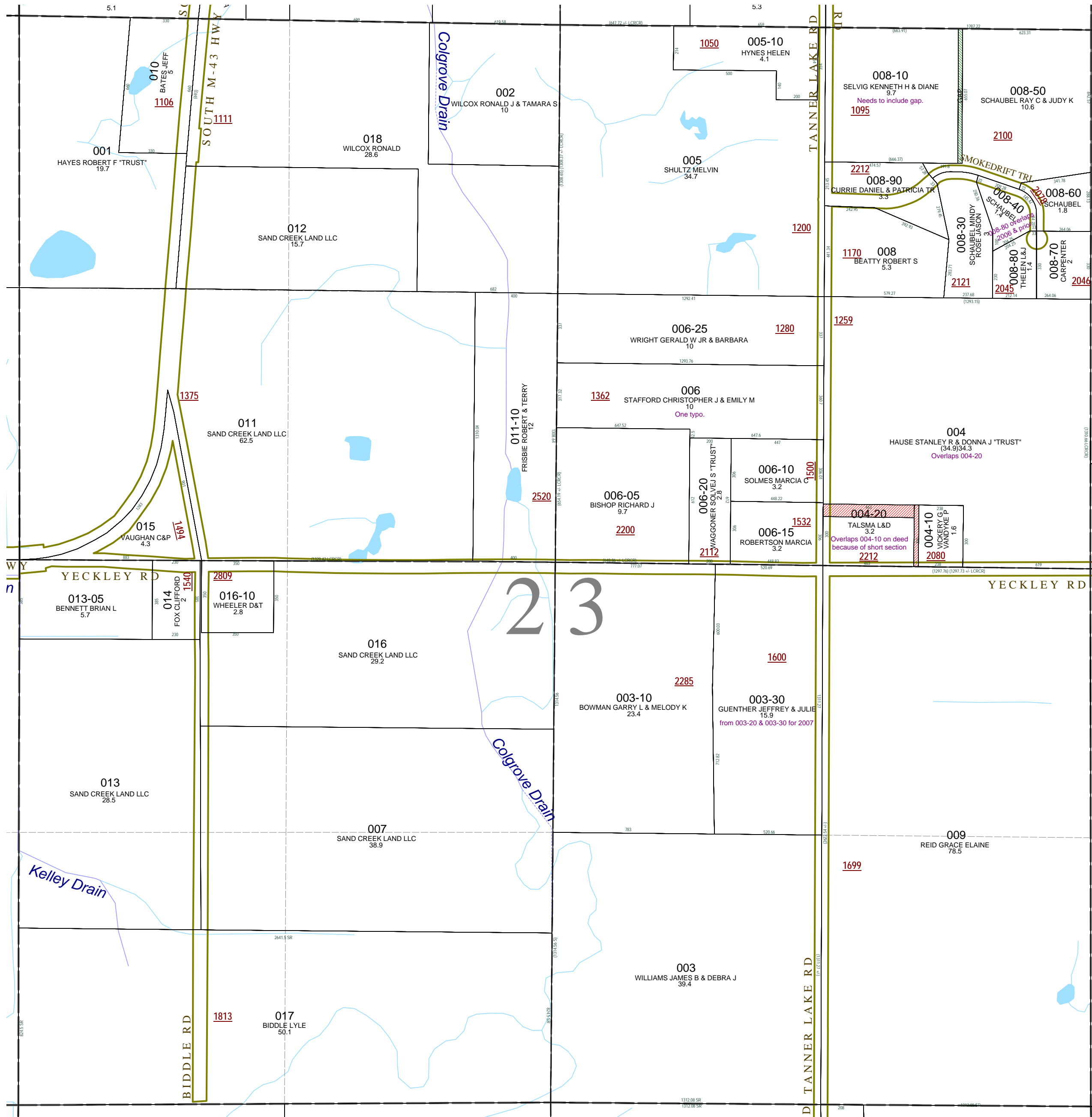


Section 23
08-13-023-
Scale 1" = 400'

This tax map was compiled for tax administration purposes from county and township records. It does not represent a land survey. Barry County Land Information Services 220 West State Street, Hastings MI 49058 (269) 945-1292 or <http://www.barrycounty.org/>



February 1997
Revised October 1998
Revised August 2000
Revised October 2002
Revised February 2004
Revised January 2005
Revised May 2006
Revised November 2007
Revised June 2009
All dimensions are from tax roll unless noted below.
D = deeded M or S = surveyed
SR = Surveyor's Record prior to 1915
GLO = Government Land Office circa. 1830



08-13-023-008-10 should include gap parcel to the east.

08-13-023-006-00 has one small typo, change "42.5 FT" to "42.59FT"

08-13-023-004-00 overlaps 004-20 should read as deeded in #200805210005406.

08-13-023-004-20 overlaps 004-10 by 22.24ft, this is determined by survey of the distance from E 1/4 post to E 1/8 line (1297.76ft) recorded in L-1-858 by Brian Reynolds in 1987 for Howard Ferris.