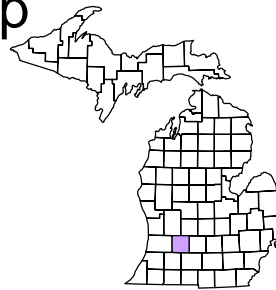


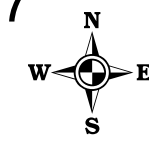
Rutland Charter Township  
T 3 N R 9 W  
Barry County  
Michigan

- Address 1234
- Gap
- Overlap
- Real Property
- Personal Property
- Approved Split
- Plat
- Condominium
- Mobile Home Park



6	5	4	3	2	1
7	8	9	10	11	12
18	17	16	15	14	13
19	20	21	22	23	24
30	29	28	27	26	25
31	32	33	34	35	36

SE 1/4 Section 27  
08-13-027-  
Scale 1" = 200'



August 2000  
Revised October 2002  
Revised February 2004  
Revised January 2005  
Revised May 2006  
Revised November 2007  
Revised June 2009

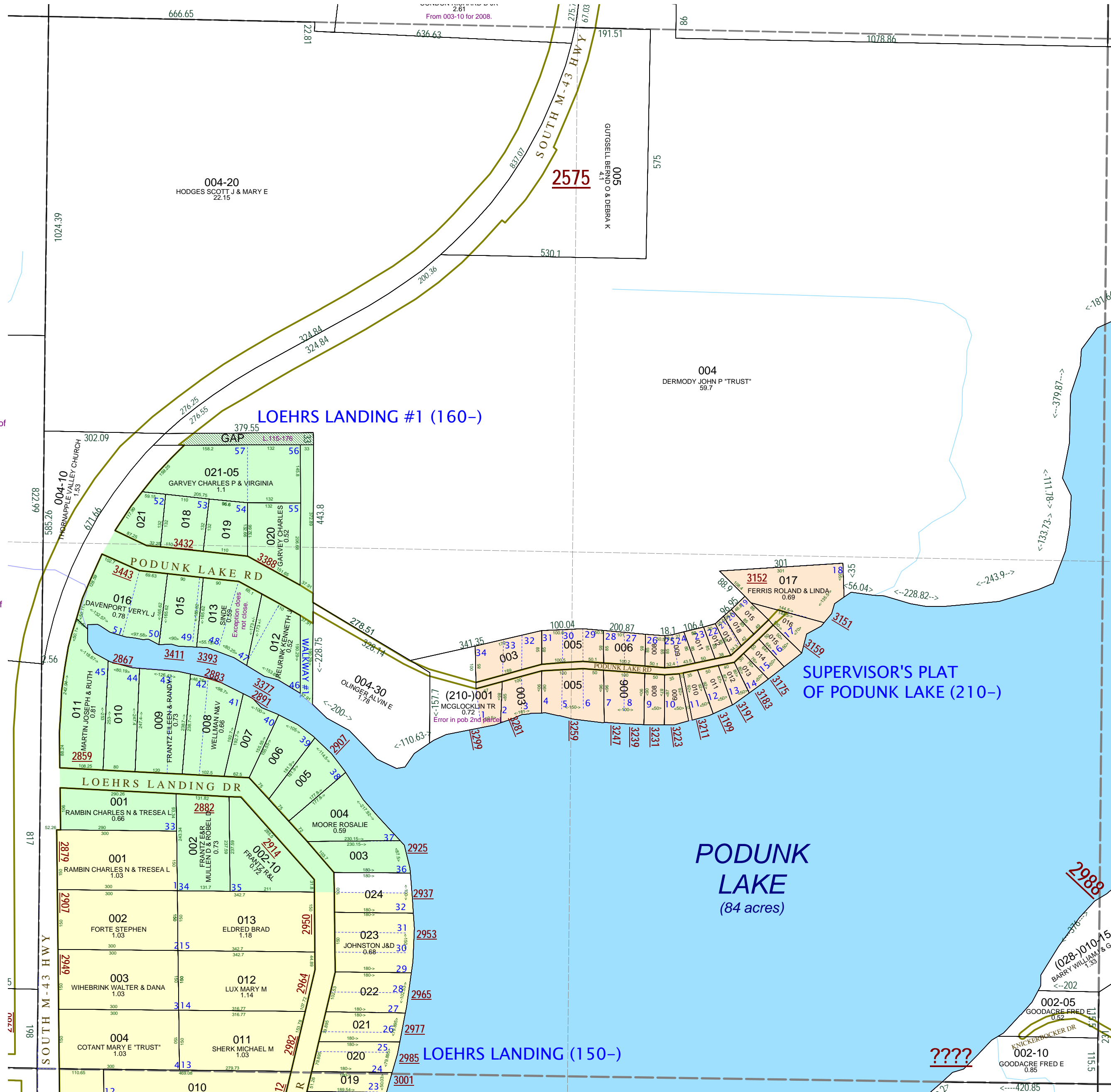
This tax map was compiled for tax administration purposes from county and township records. It does not represent a land survey. Barry County Land Information Services 220 West State Street, Hastings MI 49058 (269) 945-1292 or <http://www.barrycounty.org/>

All dimensions are from tax roll unless noted below.  
D = deeded M or S = surveyed  
SR = Surveyor's Record prior to 1915  
GLO = Government Land Office circa. 1830

GAP north of Loehr's Landing #1, former bed of relocated road. Last deed of record to Luther Loehr in L.115-176.

08-13-160-013-00 is missing the first course of the first exception. See R#1174442.

08-13-210-001-00 has an error in the point of beginning of the second parcel.



????