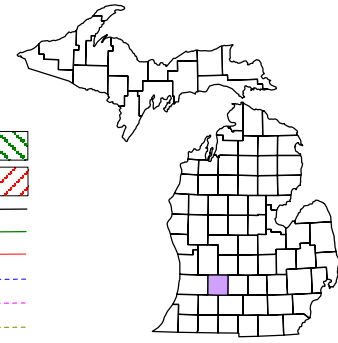


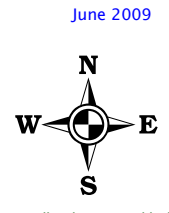
Village of Middleville
T 4 N R 10 W
Barry County
Michigan
Sheet 6-NW

- Address 12345
- Gap
- Overlap
- Real Property
- Personal Property
- Approved Split
- Plat
- Condominium
- Mobile Home Park



6	5	4	3	2	1
7	8	9	10	11	12
18	17	16	15	14	13
19	20	21	22	23	24
30	29	28	27	26	25
31	32	33	34	35	36

NW 1/4 SW 1/4 Section 23
08-41-023-
Scale 1"= 100'



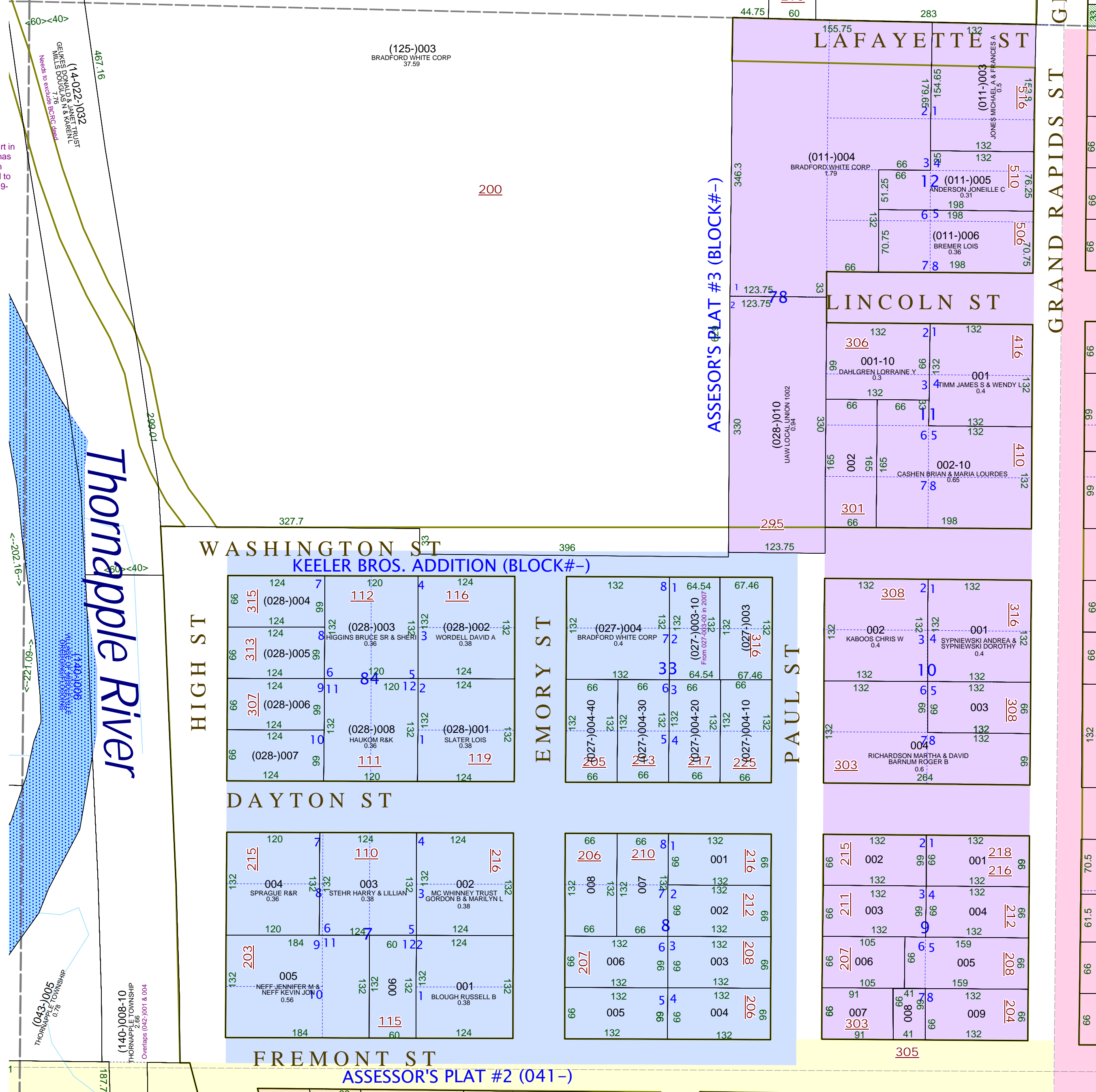
This tax map was compiled for tax administration purposes from county and township records. It does not represent a land survey. Barry County Land Information Services 220 West State Street, Hastings MI 49058 (269) 945-1292 or http://www.barrycounty.org/

All dimensions are from tax roll unless noted below:
Dimensions in parentheses are calculated
D = Deeded versus M or S = Surveyed
SR = Surveyor's Record prior to 1915
GLO = Government Land Office circa 1830
LCRC = Land Corner Recordation Certificate

08-14-022-032-00 is part in the Village and part in the Township. The Village of Middleville now has 1/3rd interest in the parcel which they got from D&B less 90ft wide ROW to Crane Rd deeded to Barry County Road Commission in #20090619-0006438 & #200906190006440.

08-41-011-001-00 thru 003-00 & 005-00 need to have complete plat name of "ASSESSOR'S PLAT #3 OF MIDDLEVILLE", because we have a Assessor's Plat #3 of Nashville too.

08-41-028-010-00 needs to have complete plat name of "ASSESSOR'S PLAT #3 OF MIDDLEVILLE", because we have a Assessor's Plat #3 of Nashville too.



08-41-140-008-10 overlaps 41-042-001-00 & 004-00.