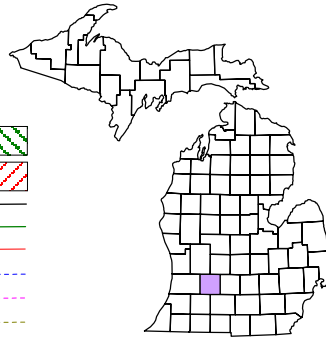


Thornapple Township
T 4 N R 10 W
Barry County
Michigan

- Address 12345
- Gap
- Overlap
- Real Property
- Personal Property
- Approved Split
- Plat
- Condominium
- Mobile Home Park



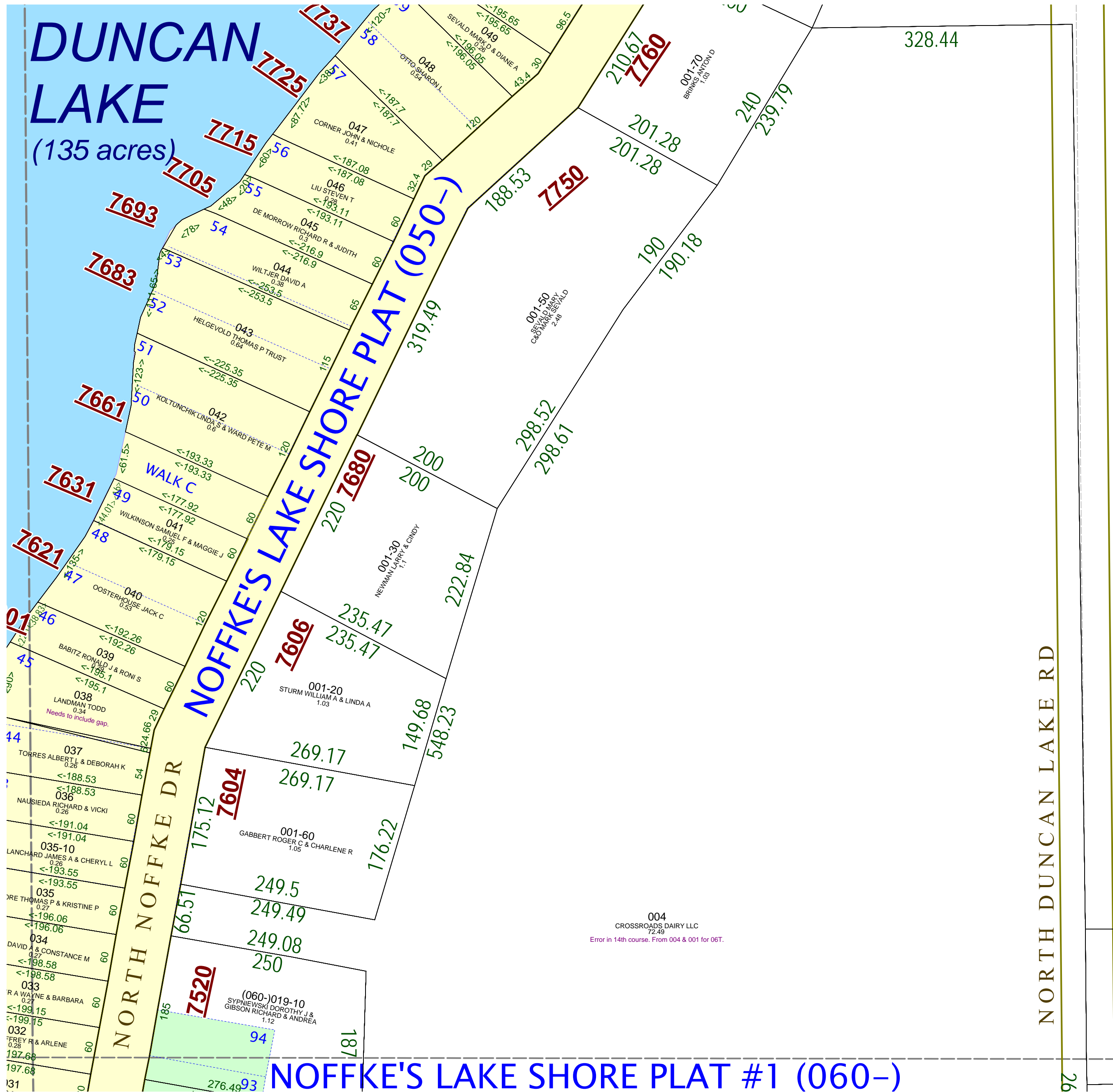
6	5	4	3	2	1
7	8	9	10	11	12
18	17	16	15	14	13
19	20	21	22	23	24
30	29	28	27	26	25
31	32	33	34	35	36

SW 1/4 NW 1/4 Section 5
08-14-005-
Scale 1"= 100'



This tax map was compiled for tax administration purposes from county and township records. It does not represent a land survey.
Barry County Land Information Services
220 West State Street, Hastings MI 49058
(269) 945-1292 or <http://www.barrycounty.org/>

June 2009
All dimensions are from tax roll unless noted below:
Dimensions in parentheses are calculated
D = deeded versus M or S = surveyed
SR = Surveyor's Record prior to 1915
GLO = Government Land Office circa. 1830
LCRC = Land Corner Recordation Certificate



08-14-050-038-00 needs to include gap parcel to its south. See R#1036249.

004
CROSSROADS DAIRY LLC
72.49
Error in 14th course. From 004 & 001 for 06T.

08-14-005-004-00 has an error in the 14th course, change "TH N 77°48'55" W 210.81;" to "TH N 79°48'55" W 210.81FT;"

NOFFKE'S LAKE SHORE PLAT #1 (060-)