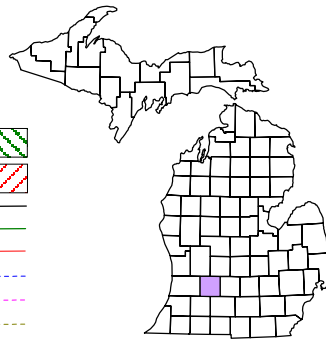


Thornapple Township
T 4 N R 10 W
Barry County
Michigan

- Address 12345
- Gap
- Overlap
- Real Property
- Personal Property
- Approved Split
- Plat
- Condominium
- Mobile Home Park



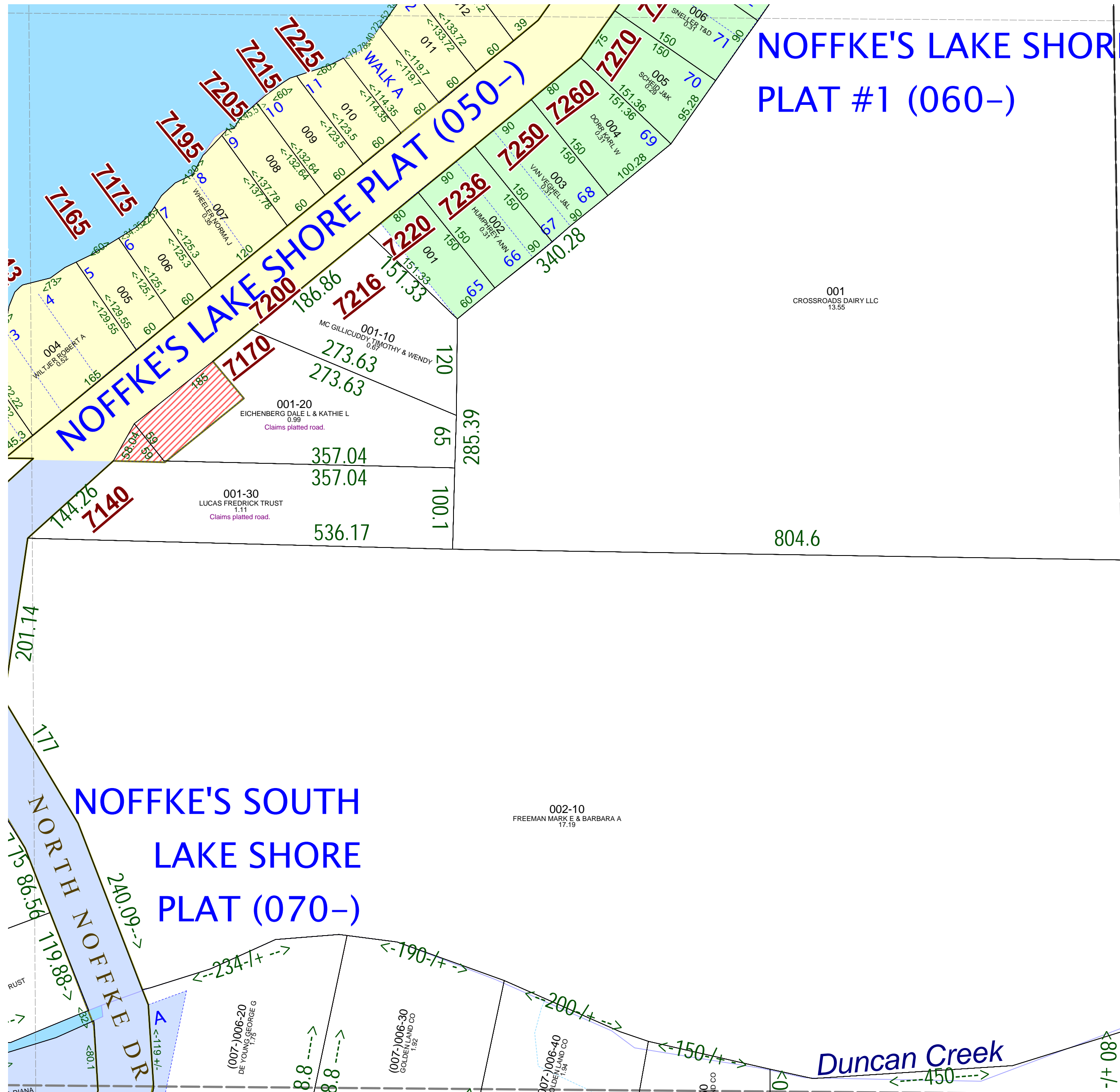
6	5	4	3	2	1
7	8	9	10	11	12
18	17	16	15	14	13
19	20	21	22	23	24
30	29	28	27	26	25
31	32	33	34	35	36

SE 1/4 SE 1/4 Section 6
08-14-006-
Scale 1"= 100'



This tax map was compiled for tax administration purposes from county and township records. It does not represent a land survey. Barry County Land Information Services 220 West State Street, Hastings MI 49058 (269) 945-1292 or <http://www.barrycounty.org/>

June 2009
All dimensions are from tax roll unless noted below:
Dimensions in parentheses are calculated
D = deeded versus M or S = surveyed
SR = Surveyor's Record prior to 1915
GLO = Government Land Office circa. 1830
LCRC = Land Corner Recordation Certificate



**NOFFKE'S LAKE SHORE
PLAT #1 (060-)**

08-14-006-001-20 claims part of plat which has not been vacated.
08-14-006-001-30 claims part of plat which has not been vacated.

001
CROSSROADS DAIRY LLC
13.55

002-10
FREEMAN MARK E & BARBARA A
17.19

Duncan Creek