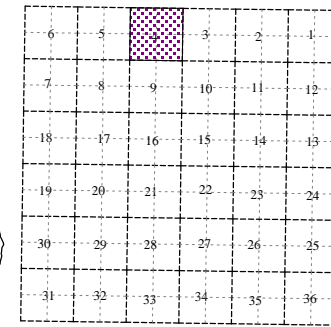
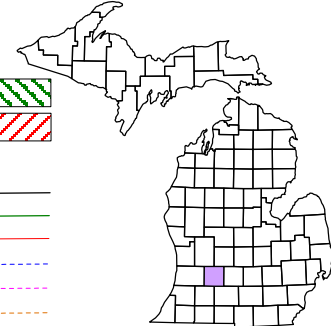
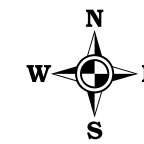


Irving Township
T 4 N R 9 W
Barry County
Michigan

- Gap
- Overlap
- Address
- Real Property
- Personal Property
- Approved Split
- Plat
- Condominium
- Mobile Home Park



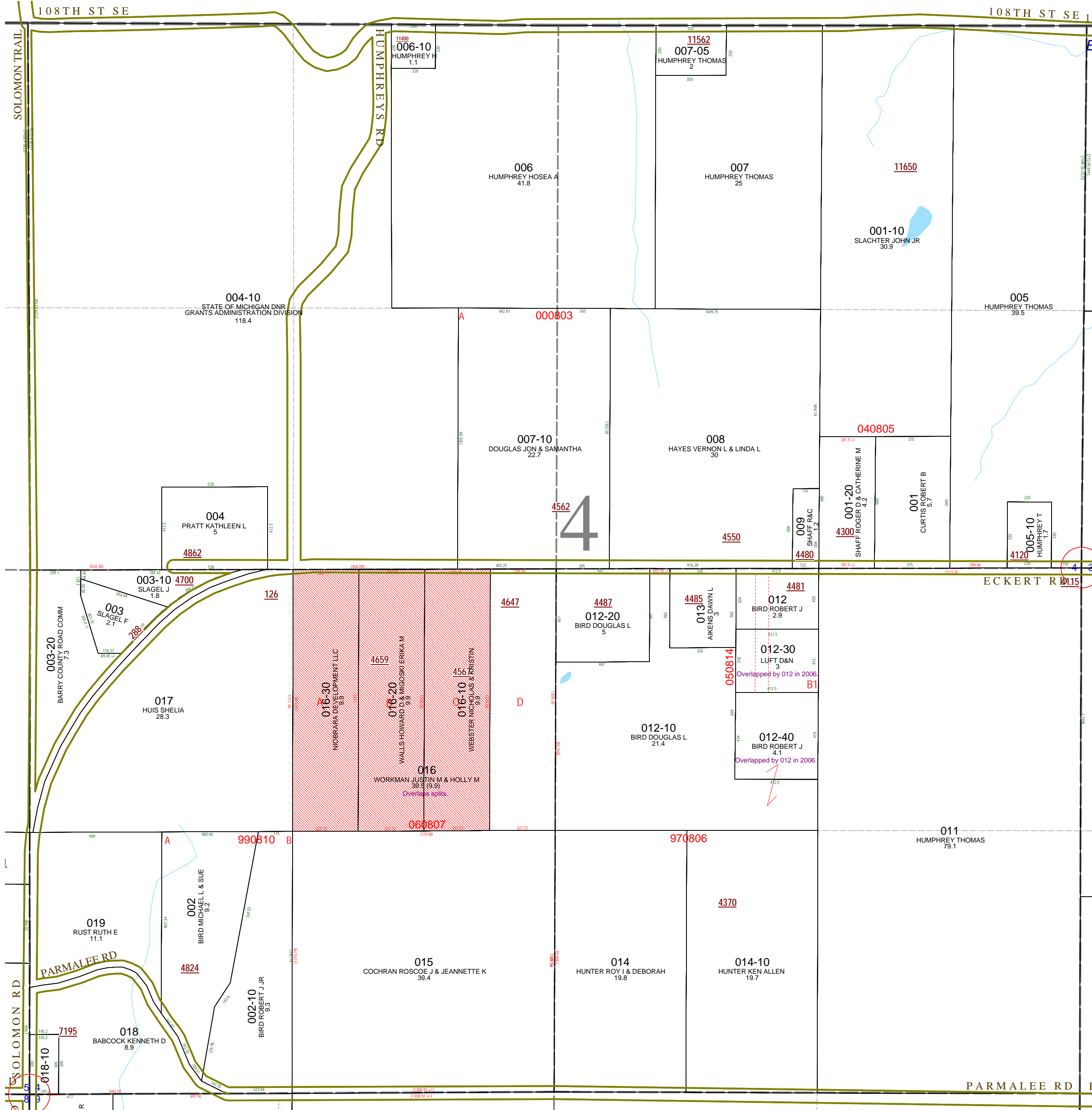
Section 4
08-08-004-
Scale 1" = 400'



January 1998
Revised May 2000
Revised January 2002
Revised July 2003
Revised November 2006
Revised June 2006
Revised September 2008

All dimensions are from tax roll unless noted below.
D = deeded M or S = surveyed
SR = Surveyor's Record prior to 1915
GLO = Government Land Office circa. 1830

This tax map was compiled for tax administration purposes from county and township records. It does not represent a land survey.
Barry County Land Information Services
220 West State Street, Hastings MI 49058
(269) 945-1292 or <http://www.barrycounty.org/>



08-08-004-016-00 does not exclude splits and should read as parcel D of split #060807.