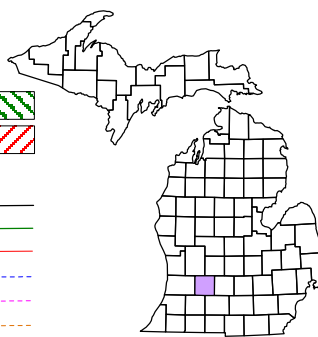


Irving Township
T 4 N R 9 W
Barry County
Michigan

- Gap
- Overlap
- Address
- Real Property
- Personal Property
- Approved Split
- Plat
- Condominium
- Mobile Home Park



6	5	4	3	2	1
7	8	9	10	11	12
13	14	15	16	17	18
19	20	21	22	23	24
25	26	27	28	29	30
31	32	33	34	35	36

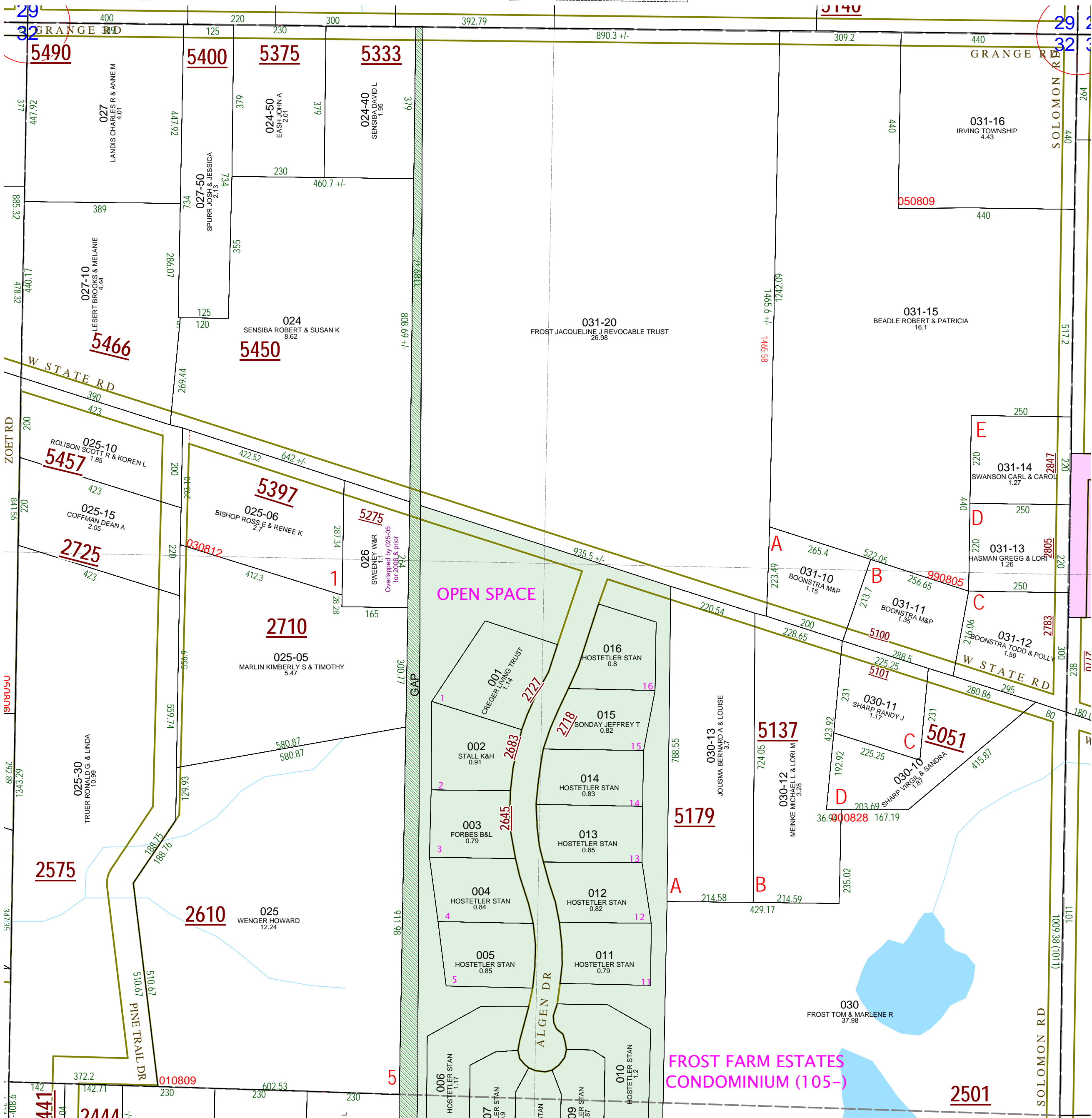
NE 1/4 Section 32
08-08-032-
Scale 1"= 200'



September 2008

This tax map was compiled for tax administration purposes from county and township records. It does not represent a land survey. Barry County Land Information Services 220 West State Street, Hastings MI 49058 (269) 945-1292 or <http://www.barrycounty.org/>

All dimensions are from tax roll unless noted below.
D = deeded M or S = surveyed
SR = Surveyor's Record prior to 1915
GLO = Government Land Office circa. 1830



GAP as revealed by survey of the condo and other properties. Last known deed is to Leonard K. Powers in L.G-347.