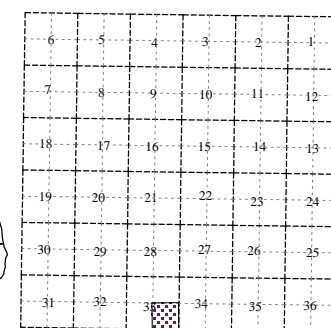
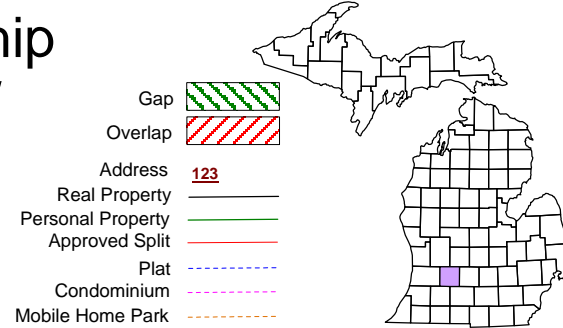
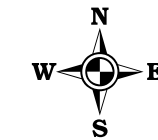


Irving Township
T 4 N R 9 W
Barry County
Michigan



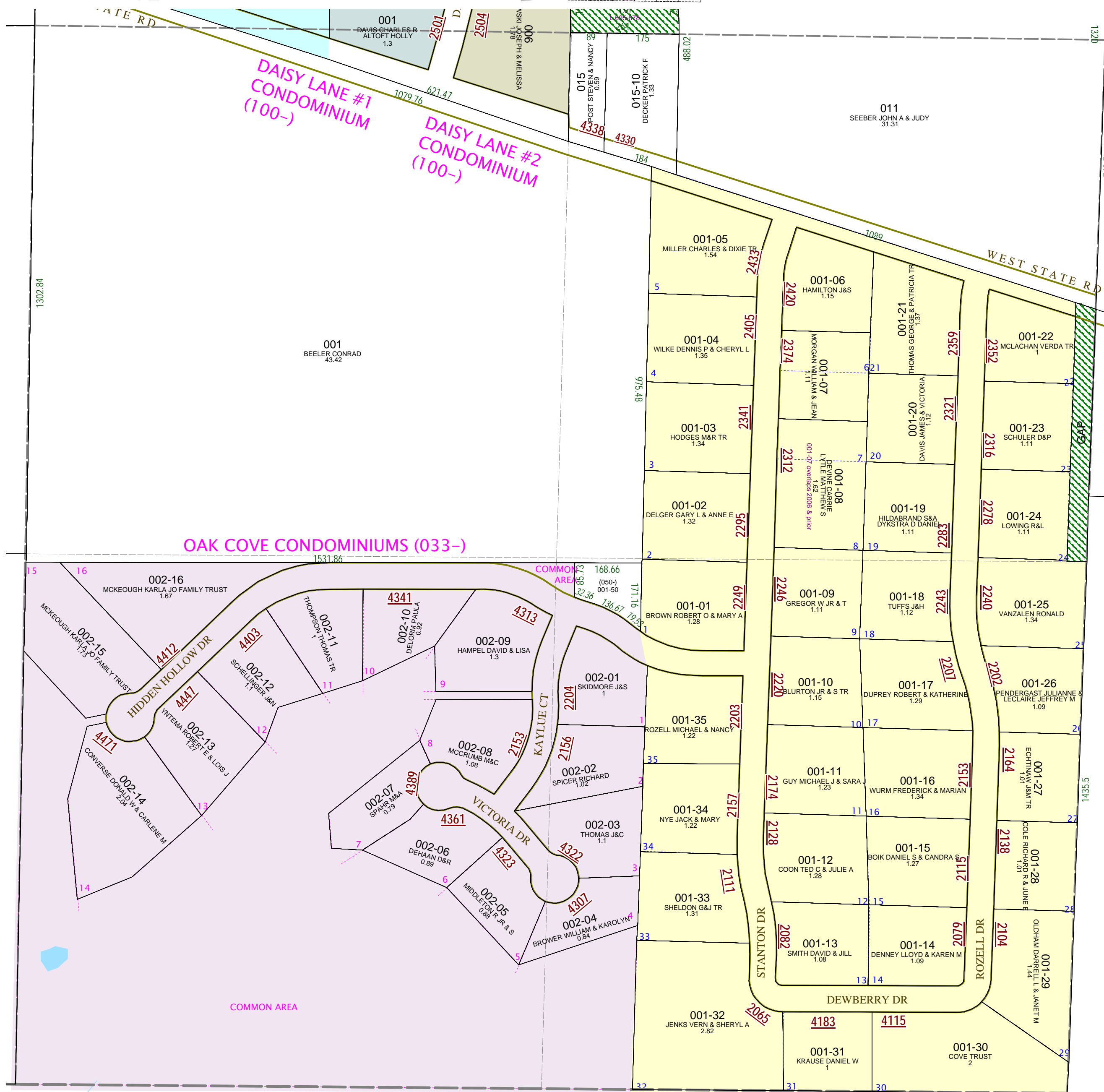
SE 1/4 Section 33
08-08-033-
Scale 1" = 200'

This tax map was compiled for tax administration purposes from county and township records. It does not represent a land survey. Barry County Land Information Services 220 West State Street, Hastings MI 49058 (269) 945-1292 or <http://www.barrycounty.org/>



June 2006
Revised September 2008

All dimensions are from tax roll unless noted below.
D = deeded M or S = surveyed
SR = Surveyor's Record prior to 1915
GLO = Government Land Office circa. 1830



DAISY LANE #1 CONDOMINIUM (100-)
DAISY LANE #2 CONDOMINIUM (100-)

OAK COVE CONDOMINIUMS (033-)

HIDDEN HOLLOW #1 (050-)

08-08-034-018-00 needs to include gap.