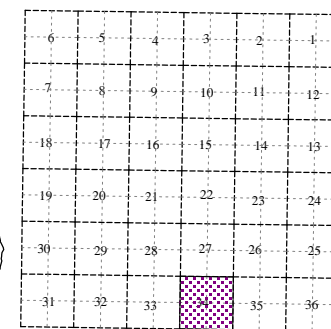
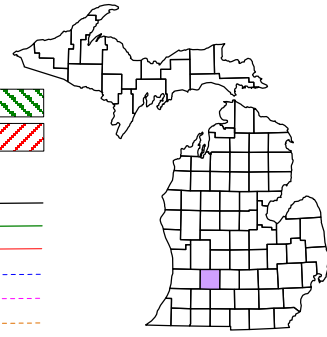


Irving Township
T 4 N R 9 W
Barry County
Michigan

- Gap
- Overlap
- Address
- Real Property
- Personal Property
- Approved Split
- Plat
- Condominium
- Mobile Home Park



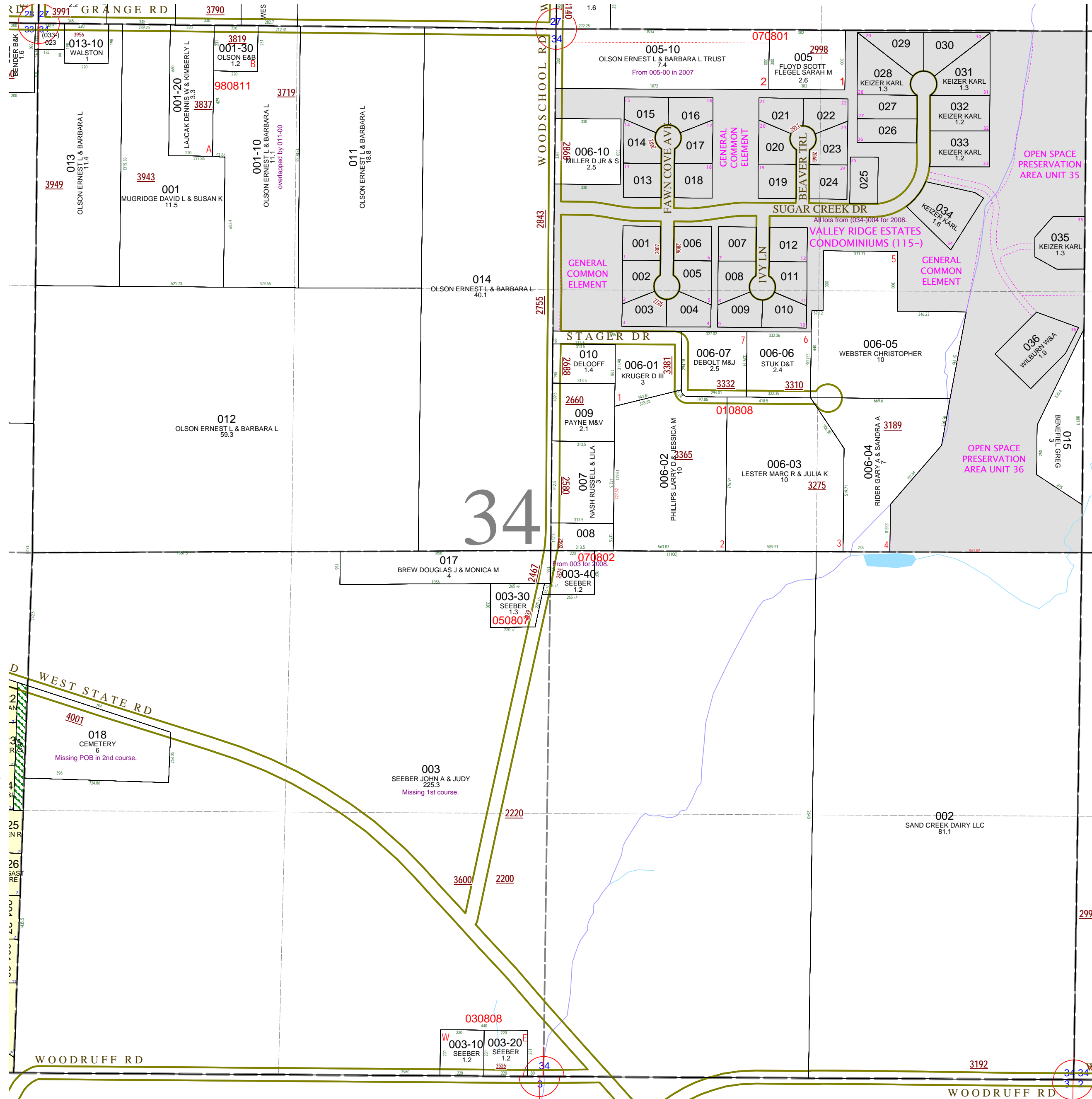
Section 34
08-08-034-
Scale 1" = 400'



January 1998
Revised May 2000
Revised January 2002
Revised July 2003
Revised November 2004
Revised June 2006
Revised October 2008

This tax map was compiled for tax administration purposes from county and township records. It does not represent a land survey. Barry County Land Information Services 220 West State Street, Hastings MI 49058 (269) 945-1292 or <http://www.barrycounty.org/>

All dimensions are from tax roll unless noted below.
D = deeded M or S = surveyed
SR = Surveyor's Record prior to 1915
GLO = Government Land Office circa. 1830



08-08-034-018-00 is missing course to point of beginning in second description and needs to include gap.

08-08-034-003-00 is missing its first course and needs to exclude parcel deeded to Barry County Road Commission in L.567-404.

34

34 34
34 34