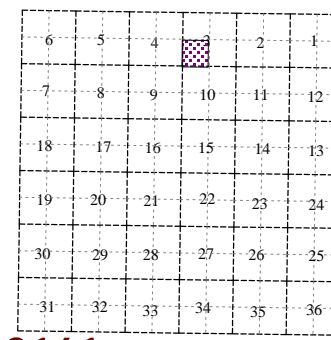
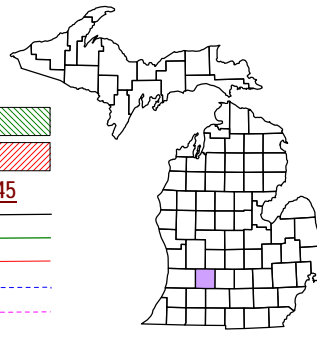
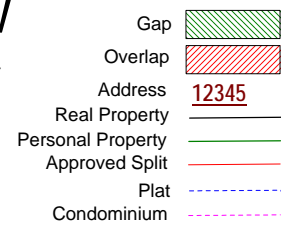


Johnstown Township  
T 1 N R 8 W  
Barry County  
Michigan



SW 1/4 Section 3

08-09-003-

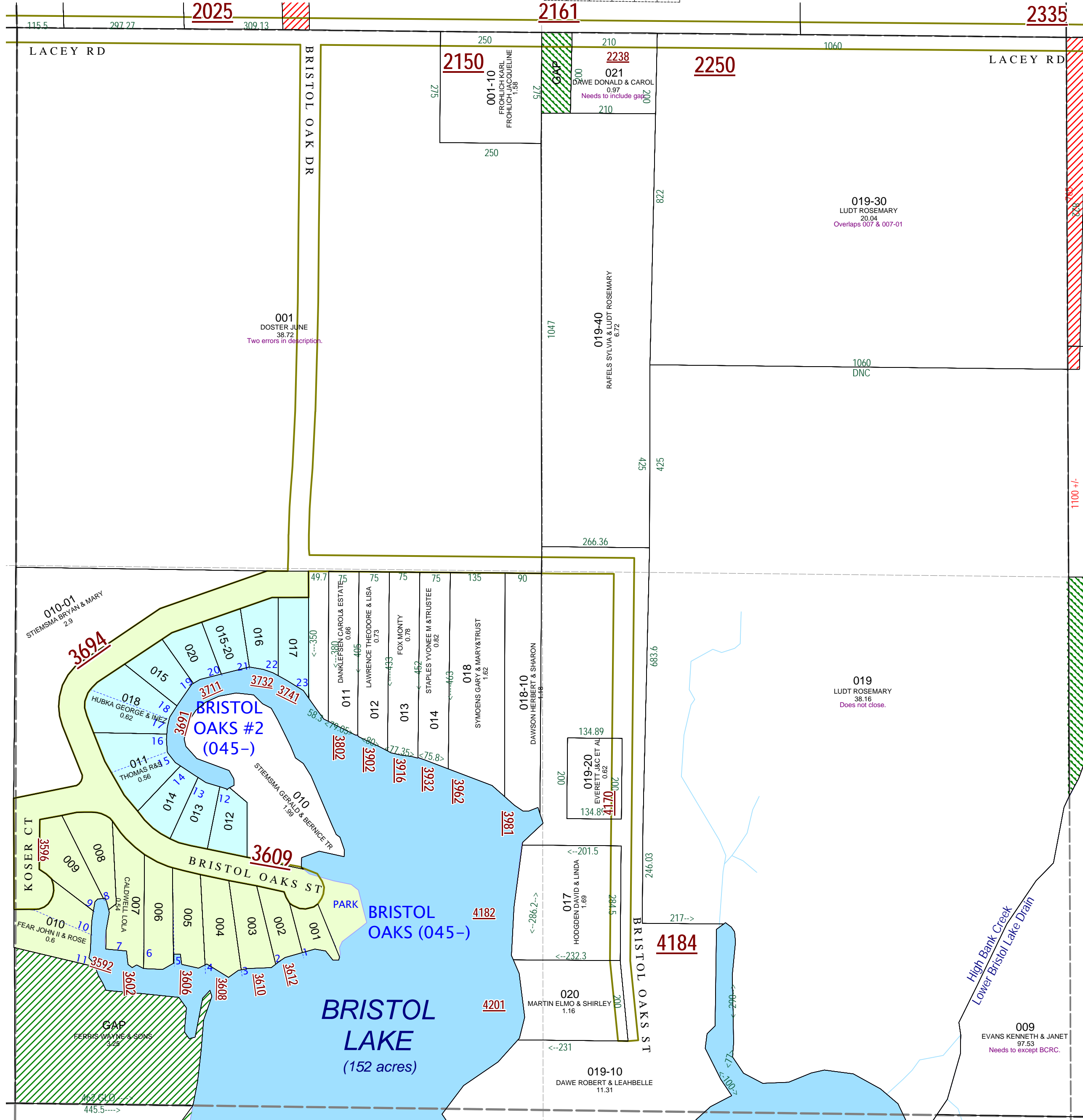
Scale 1" = 200'

This tax map was compiled for tax administration purposes from county and township records. It does not represent a land survey. Barry County Land Information Services 220 West State Street, Hastings MI 49058 (269) 945-1292 or http://www.barrycounty.org/



June 2000  
Revised May 2002  
Revised October 2003  
Revised November 2004  
Revised May 2006  
Revised May 2008

All dimensions are from tax roll unless noted below.  
D = deeded M or S = surveyed  
SR = Surveyor's Record prior to 1915  
GLO = Government Land Office circa. 1830



08-09-003-001-00 according to the trust deed in R#1018378 the parcel is a little bit larger than a quarter-quarter section and the figure of 405 feet should be 380 feet from the survey of the properties.

08-09-003-021-00 should include gap parcel to west as deeded in R#1105195.

08-09-003-019-30 the east-west measure of 1060 feet would overlaps 007-00 by about 60 feet..

08-09-003-019-00 the measure of "W 1060FT" should be "W (DEEDED 1060FT +/-) TO A PT 425FT N OF POB."

08-09-003-009-00 needs to exclude parcel deeded to the Barry County Road Commission in L.597-295.

GAP used to be part of 08-09-004-007-00 owned by Wayne Ferris & Sons.