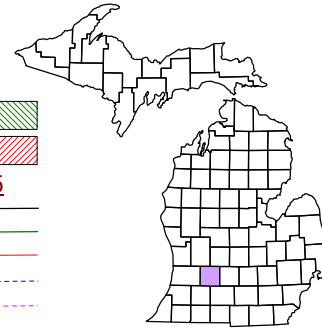


Johnstown Township
T 1 N R 8 W
Barry County
Michigan

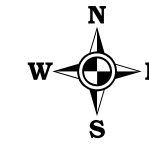


6	5	4	3	2	1
7	8	9	10	11	12
18	17	16	15	14	13
19	20	21	22	23	24
30	29	28	27	26	25
31	32	33	34	35	36

Section 4
08-09-004-

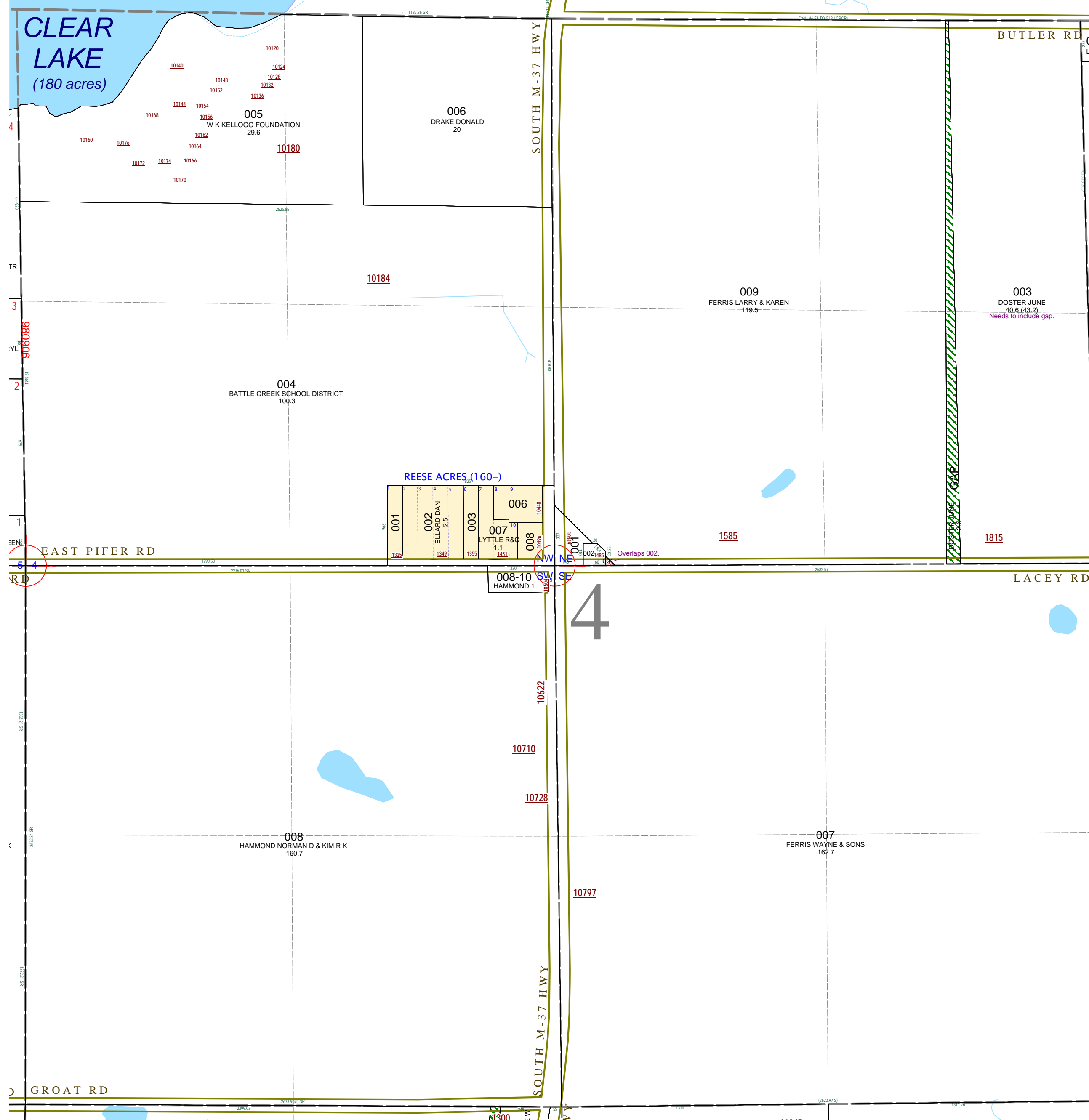
Scale 1" = 400'

This tax map was compiled for tax administration purposes from county and township records. It does not represent a land survey. Barry County Land Information Services 220 West State Street, Hastings MI 49058 (269) 945-1292 or <http://www.barrycounty.org/>



April 1998
Revised June 2000
Revised May 2002
Revised October 2003
Revised November 2004
Revised May 2006
Revised May 2008

All dimensions are from tax roll unless noted below.
D = deeded M or S = surveyed
SR = Surveyor's Record prior to 1915
GLO = Government Land Office circa. 1830



08-09-004-003-00 creates a gap as described because the section is fractional. See deed L.289-21.

08-09-004-001-00 overlaps 002-00 because the exception is incomplete.